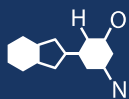


# IF YOU...



MIX IT. FILL IT. PACK IT. SHIP IT.

## WE HAVE A **PRODUCT** FOR YOU

Part #: 67WB2F

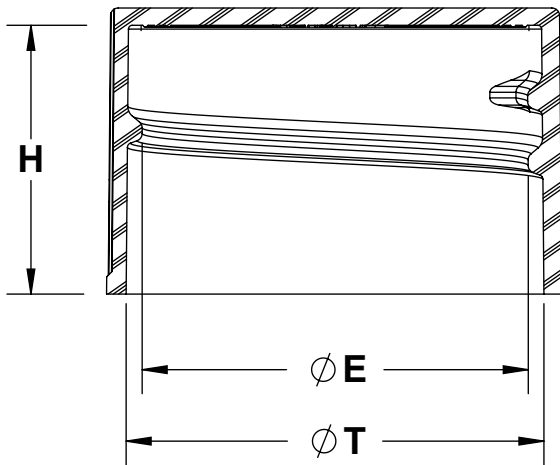
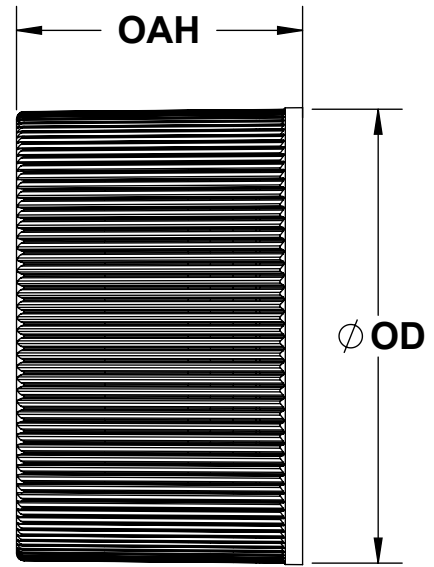
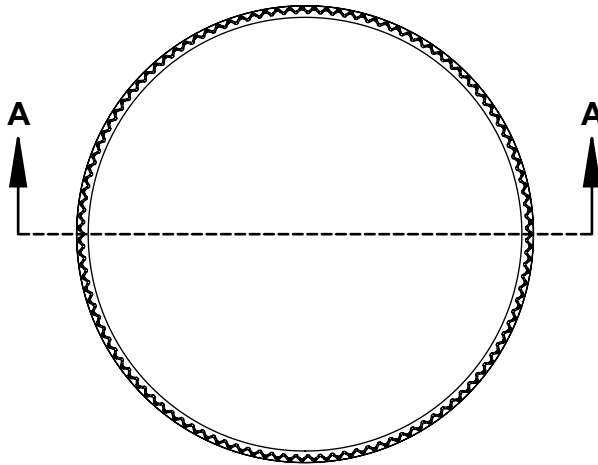
Continuous Thread Caps

28mm 28-410 Black Ribbed (Smooth Top) Plastic Cap  
w/HIS Pulp Liner for PET/PVC



The  
**CARY**COMPANY  
Est. 1895

1195 W. Fullerton Ave. | Addison, IL 60101 | T: 630.629.6600 | F: 630.629.3690 |



**SECTION A-A**

<b>THREAD DETAILS: 6 THREADS PER INCH, 0.167" PITCH</b>			
REFERENCE	TOLERANCE	UNITS	DIMENSION
E	±0.010 [0.25]	in [mm]	1.013 [25.73]
T	±0.010 [0.25]	in [mm]	1.088 [27.64]
H	±0.010 [0.25]	in [mm]	0.695 [17.65]
OAH	±0.010 [0.25]	in [mm]	0.745 [18.92]
OD	±0.010 [0.25]	in [mm]	1.197 [30.40]
<b>PART WEIGHT</b>	±0.50	g	2.55

**STATIC TORQUE  
RECOMMENDATION  
12-21 in-lbs**  
THIS REQUIREMENT MAY VARY  
DEPENDING UPON BOTTLE  
MATERIAL, NECK FINISH, AND  
CAPPING EQUIPMENT

DRAWING TYPE **CUSTOMER**

REPLACES  
DRAWINGS:  
08090

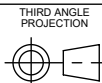
DIMENSIONS ENCLOSED IN ( )  
INDICATE REFERENCE  
DIMENSIONS AND NO  
TOLERANCE LIMITS ARE  
ESTABLISHED

TOLERANCES UNLESS OTHERWISE SPECIFIED

DIMENSION (inches)	TOLERANCE	DIMENSION (mm)	TOLERANCE
0.000-0.007	±0.006	0-20	±0.152
0.788-1.181	±0.008	21-30	±0.203
1.182-2.756	±0.012	31-70	±0.305
2.757-3.937	±0.016	71-100	±0.406
3.938-5.096	±0.020	101-150	±0.508
5.097-7.874	±0.024	151-200	±0.610
7.875-9.843	±0.032	201-250	±0.813

ANGULAR TOLERANCE ± 2°

The **CARY COMPANY**  
Est. 1895



SOLIDWORKS

DISTRIBUTION CODE

**D**

DRAWING NAME  
**28-410 CT Closure  
RL (Ribbed Side - Matte Top)**

DRAWING NUMBER  
**CQA - 10620**

DRAWN BY: DAS 3/31/2017

MATERIAL  
POLYPROPYLENE

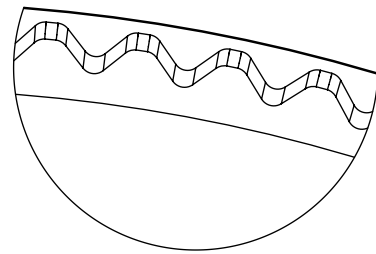
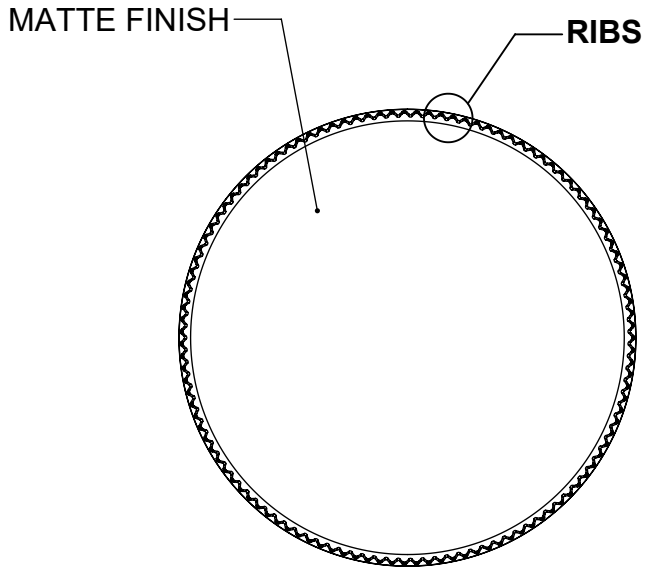
ENG APPR: JDM 10/17/2019

MODEL NUMBER:  
PM 10890 28-410 CT\_RL

QA APPR: REL 10/21/2019

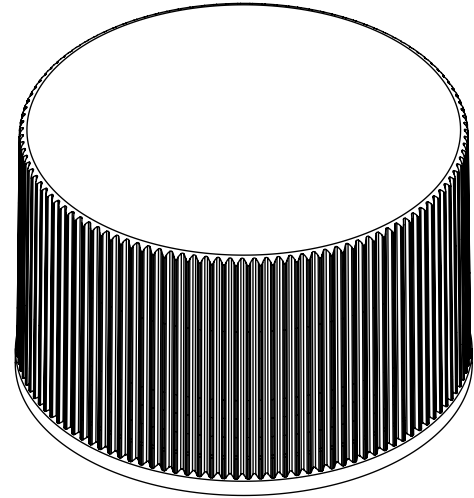
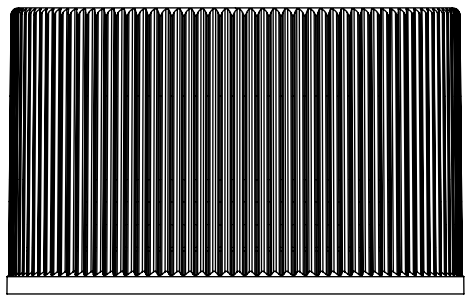
SCALE 1:1	SHEET SIZE 11in*17in	SHEET 1 of 3	REV/ NP 00.AA
--------------	-------------------------	-----------------	------------------

DATE	REV	N/P	PRODUCT DRAWING REQUEST	DESCRIPTION	ENG	DRWN
01/16/2019	00	AA	17-030	DRAWING UPDATED TO REFLECT HISTORICAL RUN DATA & PROCESS CAPABILITY. NO CHANGES TO THE STEEL OR PART HAVE OCCURRED	JDM	AMK



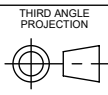
**DETAIL RIBS  
SCALE 15 : 1**

**(115) EQUISPACED RIBS**



THE CLOSURE DIMENSIONS DEPICTED ARE THOSE WHICH HAVE GENERALLY BEEN FOUND TO BE FUNCTIONAL BASED ON INDUSTRY EXPERIENCE BECAUSE OF VARIABILITY IN GLASS AND PLASTIC CONTAINER FINISHES, EACH CLOSURE/FINISH SYSTEM SHOULD BE INDIVIDUALLY EVALUATED AND TESTED TO ENSURE IT MEETS APPLICABLE PERFORMANCE CRITERIA. SEE QUALITY ASSURANCE SPECIFICATIONS FOR ADDITIONAL INFORMATION.

DRAWING TYPE: <b>CUSTOMER</b>			
REFERENCES: 28100		DIMENSIONS ENCLOSED IN ( ) INDICATE REFERENCE DIMENSIONS AND NO TOLERANCE LIMITS ARE ESTABLISHED	
TOLERANCES UNLESS OTHERWISE SPECIFIED			
DIMENSION	TOLERANCE	DIMENSION	TOLERANCE
0.788-1.181	±0.006	0-20	±0.152
1.182-2.756	±0.008	21-30	±0.203
2.757-3.937	±0.012	31-70	±0.305
3.938-5.096	±0.016	71-100	±0.406
5.097-7.874	±0.020	101-150	±0.508
7.875-9.843	±0.024	151-200	±0.610
	±0.032	201-250	±0.813
ANGULAR TOLERANCE ± 2°			



DISTRIBUTION CODE  
**D**

DRAWING NAME  
**28-410 CT Closure  
RL (Ribbed Side - Matte Top)**

DRAWING NUMBER  
**CQA - 10620**

DRAWN BY: DAS 3/31/2017

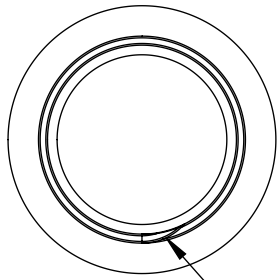
MATERIAL  
POLYPROPYLENE

ENG APPR: JDM 10/17/2019

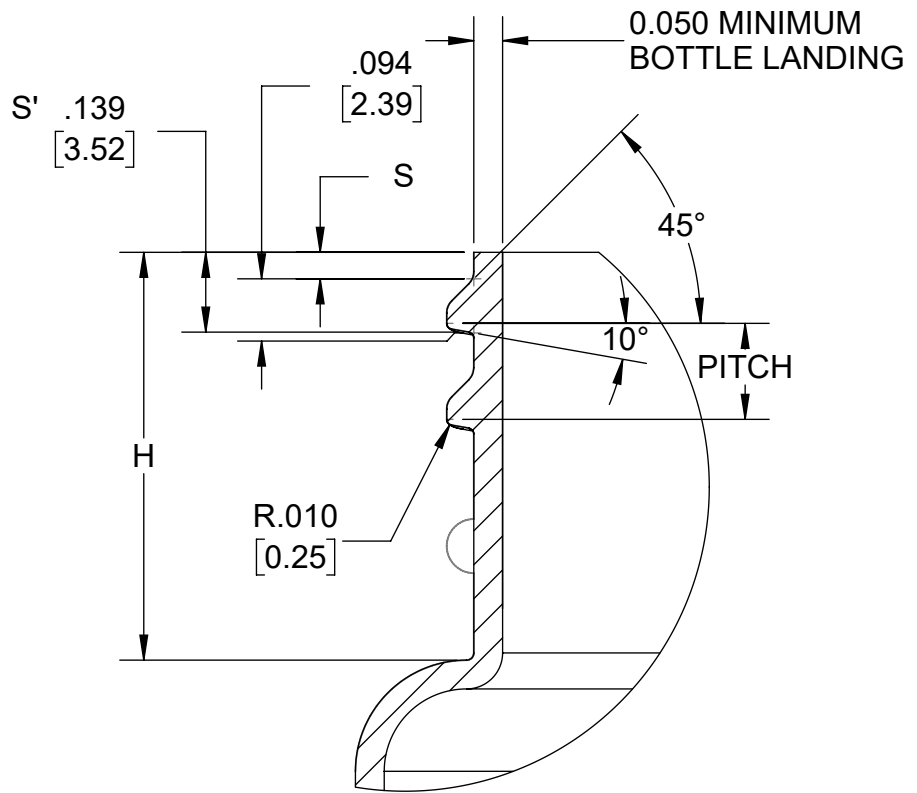
MODEL NUMBER:  
PM 10890 28-410 CT\_RL

QA APPR: REL 10/21/2019

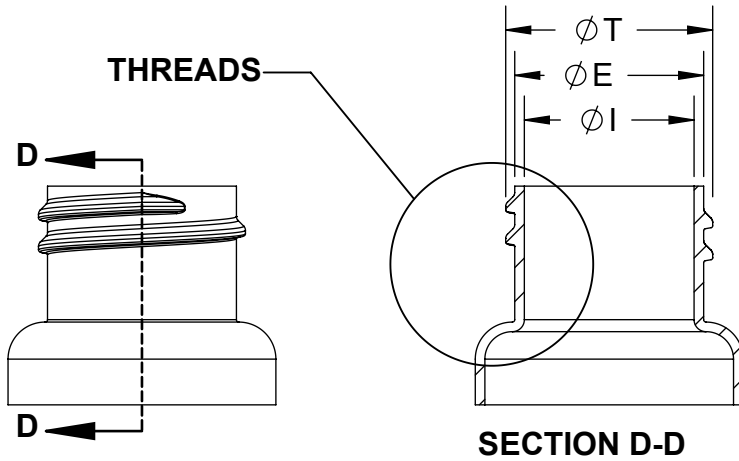
SCALE	SHEET SIZE	SHEET	REV.NP
1:1	8.5 X 11	2 of 3	00.AA



THREAD START



DETAIL THREADS  
SCALE 3 : 1



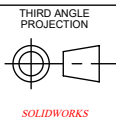
SECTION D-D

REFERENC E	TOLERANC E	UNITS	DIMENSIONS
E	± 0.010 [0.25]	in [mm]	0.984 [24.99]
T	± 0.010 [0.25]	in [mm]	1.068 [27.13]
I	MINIMUM	in [mm]	0.614 [15.6]
S	±0.015 [0.38 ]	in [mm]	0.046 [1.17]
H	MINIMUM	in [mm]	0.705 [17.91]
PITCH		in [mm]	0.167 [4.23]
TPI			6

NOTE: THE NOMINAL ORIENTATION ILLUSTRATED IS BASED ON NOMINAL DIMENSIONS OF BOTH THE CLOSURE AND THE RECOMMENDED NECK FINISH. FOR EXACT ORIENTATION EACH BOTTLE SHOULD BE EVALUATED ON A CASE BY CASE BASIS.

THE CLOSURE DIMENSIONS DEPICTED ARE THOSE WHICH HAVE GENERALLY BEEN FOUND TO BE FUNCTIONAL BASED ON INDUSTRY EXPERIENCE BECAUSE OF VARIABILITY IN GLASS AND PLASTIC CONTAINER FINISHES, EACH CLOSURE/FINISH SYSTEM SHOULD BE INDIVIDUALLY EVALUATED AND TESTED TO ENSURE IT MEETS APPLICABLE PERFORMANCE CRITERIA. SEE QUALITY ASSURANCE SPECIFICATIONS FOR ADDITIONAL INFORMATION.

DRAWING TYPE <b>CUSTOMER</b>			
DIMENSIONS ENCLOSED IN ( ) INDICATE REFERENCE DIMENSIONS AND NO TOLERANCE LIMITS ARE ESTABLISHED			
TOLERANCES UNLESS OTHERWISE SPECIFIED			
DIMENSION	TOLERANCE	DIMENSION	TOLERANCE
0.0787	±0.006	0-20	±0.152
0.788-1.181	±0.008	21-30	±0.203
1.182-2.756	±0.012	31-70	±0.305
2.757-3.937	±0.016	71-100	±0.406
3.938-5.096	±0.020	101-150	±0.508
5.097-7.874	±0.024	151-200	±0.610
7.875-9.843	±0.032	201-250	±0.813
ANGULAR TOLERANCE ± 2°			



DISTRIBUTION CODE  
**D**

DRAWING NAME  
**28-410 CT Closure RECOMMENDED NECK FINISH**  
DRAWING NUMBER  
**CQA - 10620**

DRAWN BY: DAS 3/31/2017  
ENG APPR: JDM 10/17/2019  
QA APPR: REL 10/21/2019

MATERIAL  
MODEL NUMBER:  
SCALE: 1:1  
SHEET SIZE: 8.5 X 11  
SHEET: 3 of 3  
REV/N/P: 00.AA