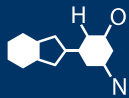


IF YOU...



MIX IT. FILL IT. PACK IT. SHIP IT.

WE HAVE A **PRODUCT** FOR YOU

Part # 67WD06

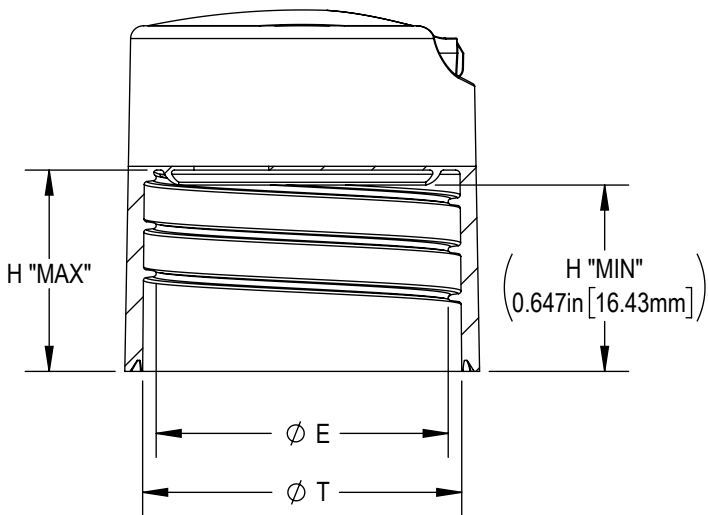
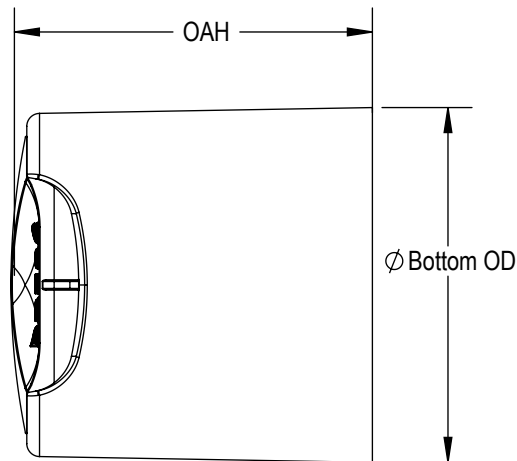
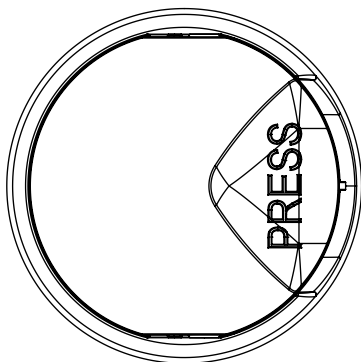
Disc Top Caps

28mm 28-410 White Smooth Disc Top Cap, Unlined,
.325"x.125" Orifice, Valve Seal



The
CARYCOMPANY
Est. 1895

1195 W. Fullerton Ave. | Addison, IL 60101 | T: 630.629.6600 | F: 630.629.3690 | TheCaryCompany.com



THREAD DETAIL INFORMATION:
6 THREADS PER INCH, 0.167 PITCH
CONTINUOUS THREAD TO THE UNDERSIDE OF DECK

REFERENCE	DIMENSION	TOLERANCE	UNITS
E	1.014 [25.76]	±0.007 [0.18]	in [mm]
T	1.108 [28.14]	±0.007 [0.18]	in [mm]
H "MAX"	0.699 [17.75]	±0.015 [0.38]	in [mm]
BOTTOM OD	1.232 [31.29]	±0.015 [0.38]	in [mm]
OAH	1.255 [31.88]	±0.015 [0.38]	in [mm]
PART WEIGHT	6.2	± 0.3	g
OPENING FORCE	5.0	± 3.0	lbf

STATIC TORQUE RECOMMENDATION
12-21 in-lbs
THIS REQUIREMENT MAY VARY DEPENDING
UPON BOTTLE MATERIAL, NECK FINISH, AND
CAPPING EQUIPMENT

DRAWING TYPE : CUSTOMER

REPLACES DRAWINGS:

10353

DIMENSIONS ENCLOSED IN ()
INDICATE REFERENCE
DIMENSIONS AND NO TOLERANCE
LIMITS ARE ESTABLISHED

TOLERANCES UNLESS OTHERWISE SPECIFIED

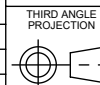
DIMENSION (inches)	TOLERANCE	DIMENSION (mm)	TOLERANCE
0-0.787	±0.006	0-20	±0.152
0.788-1.181	±0.008	21-30	±0.203
1.182-2.756	±0.012	31-70	±0.305
2.757-3.937	±0.016	71-100	±0.406
3.938-5.096	±0.020	101-150	±0.508
5.097-7.874	±0.024	151-200	±0.610
7.875-9.843	±0.032	201-250	±0.813

ANGULAR TOLERANCE ± 2°

PROPRIETARY AND CONFIDENTIAL

The
CARY COMPANY
Est. 1895

TheCaryCompany.com | 630.629.6600



DISTRIBUTION
CODE
D

DRAWING NAME
28-410 Disc Top Smooth
Smooth Domed (0.325" X 0.125")

DRAWING NUMBER
CQA - 11236

DRAWN BY: CAN 8/2/2019

MATERIAL
POLYPROPYLENE

ENG APPR: CAN 8/2/2019

MODEL NUMBER:
PM 11232 Smooth Disk Top Assembly

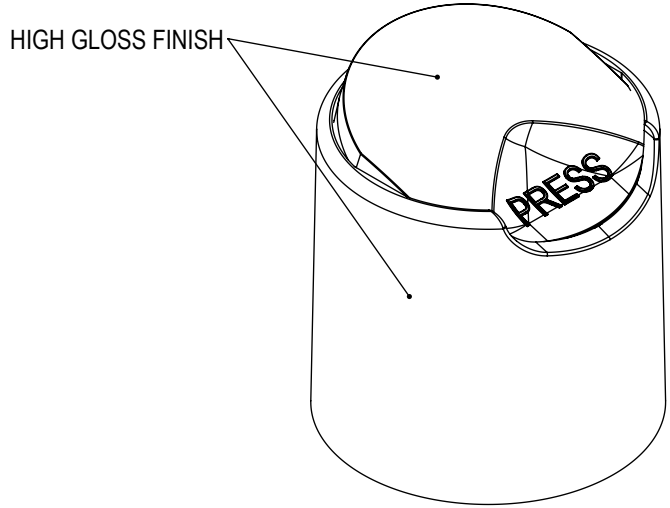
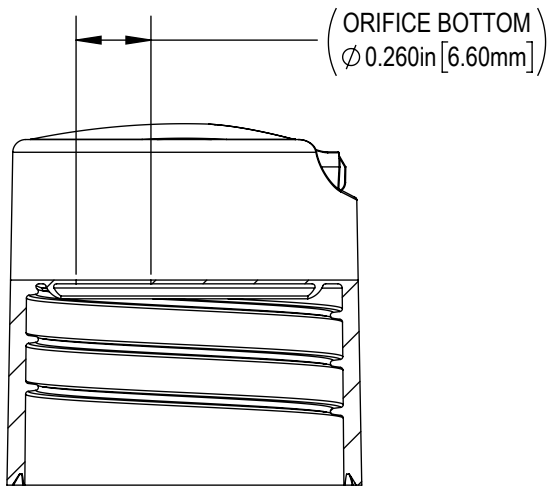
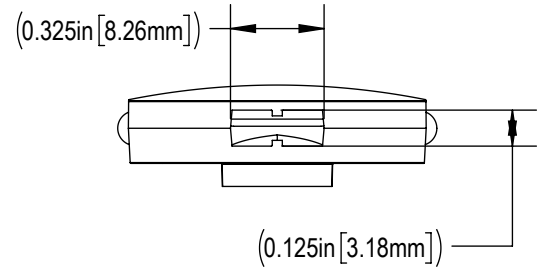
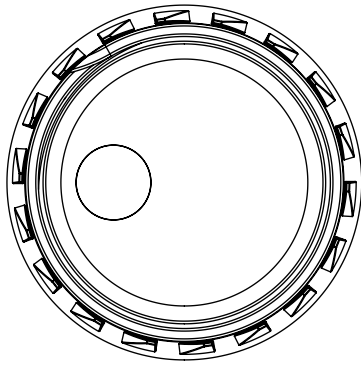
QA APPR: SSK 8/2/2019

SCALE	SHEET SIZE	SHEET	REV/ NP
3:2	8.5in*11in	1 of 3	00.AA

THE CLOSURE DIMENSIONS
DEPICTED ARE THOSE WHICH HAVE GENERALLY BEEN
FOUND TO BE FUNCTIONAL BASED ON INDUSTRY
EXPERIENCE BECAUSE OF VARIABILITY IN GLASS AND
PLASTIC CONTAINER FINISHES, EACH CLOSURE/FINISH
SYSTEM SHOULD BE INDIVIDUALLY EVALUATED AND
TESTED TO ENSURE IT MEETS APPLICABLE
PERFORMANCE CRITERIA. SEE QUALITY ASSURANCE
SPECIFICATIONS FOR ADDITIONAL INFORMATION.

P: 630-629-6600 | F: 630-629-3690
1195 W. Fullerton Ave. Addison, IL 60101
www.thecarycompany.com

DATE	REV	N/P	DESCRIPTION	ENG	DRWN
7/18/2019	00	AA	REVISED RESISTOR DESIGN, AND UPDATED DRAWING FORMAT	CAN	CAN



THE CLOSURE DIMENSIONS DEPICTED ARE THOSE WHICH HAVE GENERALLY BEEN FOUND TO BE FUNCTIONAL BASED ON INDUSTRY EXPERIENCE BECAUSE OF VARIABILITY IN GLASS AND PLASTIC CONTAINER FINISHES. EACH CLOSURE/FINISH SYSTEM SHOULD BE INDIVIDUALLY EVALUATED AND TESTED TO ENSURE IT MEETS APPLICABLE PERFORMANCE CRITERIA. SEE QUALITY ASSURANCE SPECIFICATIONS FOR ADDITIONAL INFORMATION.

DRAWING TYPE : CUSTOMER			
REFERENCES:		DIMENSIONS ENCLOSED IN () INDICATE REFERENCE DIMENSIONS AND NO TOLERANCE LIMITS ARE ESTABLISHED	
TOLERANCES UNLESS OTHERWISE SPECIFIED			
DIMENSION (inches)	TOLERANCE	DIMENSION (mm)	TOLERANCE
0-0.787	±0.006	0-20	±0.152
0.788-1.181	±0.008	21-30	±0.203
1.182-2.756	±0.012	31-70	±0.305
2.757-3.937	±0.016	71-100	±0.406
3.938-5.096	±0.020	101-150	±0.508
5.097-7.874	±0.024	151-200	±0.610
7.875-9.843	±0.032	201-250	±0.813
ANGULAR TOLERANCE ± 2°			
PROPRIETARY AND CONFIDENTIAL			

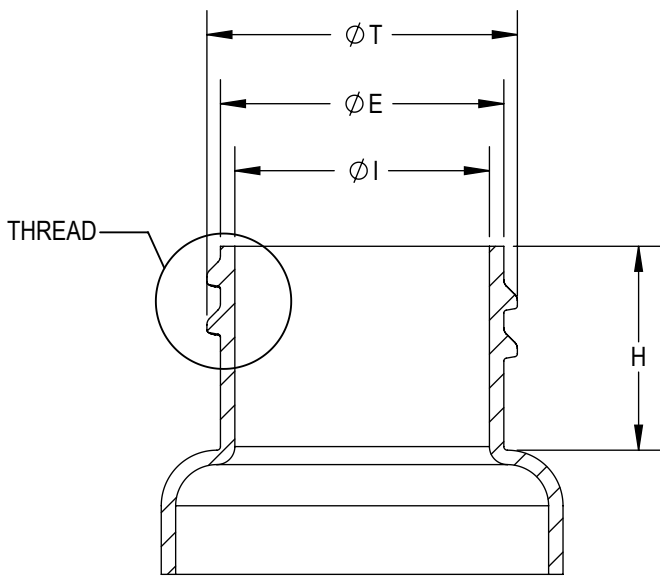
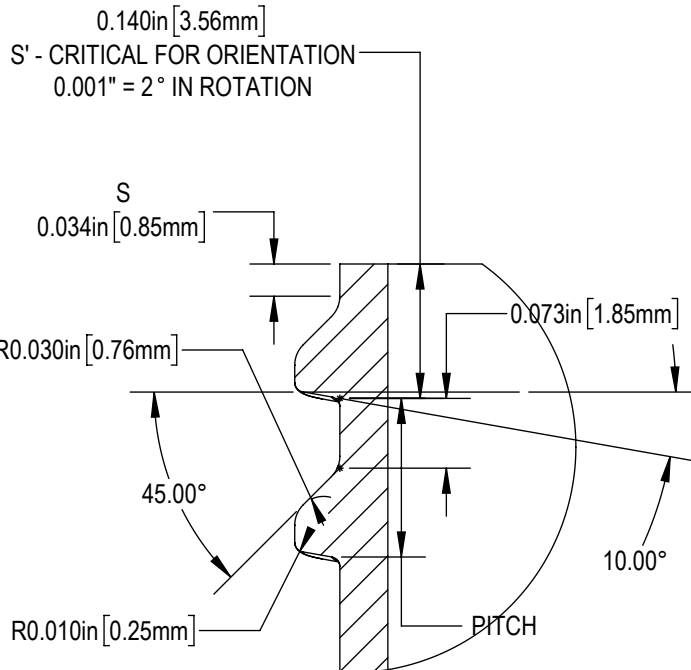
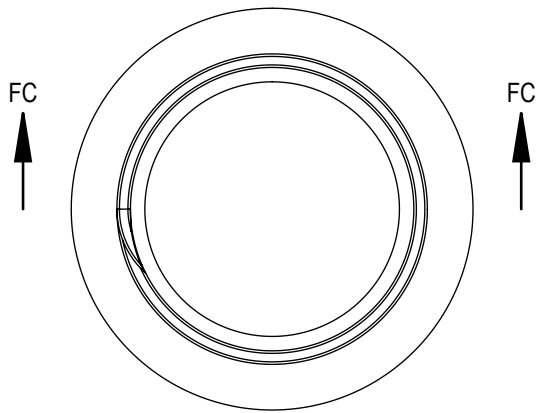


TheCaryCompany.com | 630.629.6600

THIRD ANGLE PROJECTION	DISTRIBUTION CODE D	DRAWING NAME 28-410 Disc Top Smooth Smooth Domed (0.325" X 0.125")			
		DRAWING NUMBER CQA - 11236			
DRAWN BY. CAN 8/2/2019		MATERIAL POLYPROPYLENE			
ENG APPR. CAN 8/2/2019		MODEL NUMBER: PM 11232 Smooth Disk Top Assembly			
QA APPR. SSK 8/2/2019	SCALE 3:2	SHEET SIZE 8.5 X 11	SHEET 2 of 3	REV.NP 00.AA	

P: 630-629-6600 | F: 630-629-3690
1195 W. Fullerton Ave. Addison, IL 60101
www.thecarycompany.com

RECOMMENDED NECK FINISH



REFERENCE	TOLERANCE	UNITS	DIMENSION
E	±0.008 [0.20]	in [mm]	0.984 [24.99]
T	±0.008 [0.20]	in [mm]	1.078 [27.38]
I	MINIMUM	in [mm]	0.752 [19.10]
I MAX	MAXIMUM	in [mm]	0.857 [21.78]
S	±0.015 [0.38]	in [mm]	0.034 [0.86]
H	±0.015 [0.38]	in [mm]	0.708 [17.98]
PITCH	±0.010 [0.25]	in [mm]	0.167
TPI			6

NOTE: THE NOMINAL ORIENTATION ILLUSTRATED IS BASED ON NOMINAL DIMENSIONS OF BOTH THE CLOSURE AND THE RECOMMENDED NECK FINISH. FOR EXACT ORIENTATION EACH BOTTLE SHOULD BE EVALUATED ON A CASE BY CASE BASIS.

THE CLOSURE DIMENSIONS DEPICTED ARE THOSE WHICH HAVE GENERALLY BEEN FOUND TO BE FUNCTIONAL BASED ON INDUSTRY EXPERIENCE BECAUSE OF VARIABILITY IN GLASS AND PLASTIC CONTAINER FINISHES, EACH CLOSURE/FINISH SYSTEM SHOULD BE INDIVIDUALLY EVALUATED AND TESTED TO ENSURE IT MEETS APPLICABLE PERFORMANCE CRITERIA. SEE QUALITY ASSURANCE SPECIFICATIONS FOR ADDITIONAL INFORMATION.

P: 630-629-6600 | F: 630-629-3690
1195 W. Fullerton Ave. Addison, IL 60101
www.thecarycompany.com

DRAWING TYPE : CUSTOMER

DIMENSIONS ENCLOSED IN () INDICATE REFERENCE DIMENSIONS AND NO TOLERANCE LIMITS ARE ESTABLISHED

TOLERANCES UNLESS OTHERWISE SPECIFIED

DIMENSION (inches)	TOLERANCE	DIMENSION (mm)	TOLERANCE
0-0.787	±0.006	0-20	±0.152
0.788-1.181	±0.008	21-30	±0.203
1.182-2.756	±0.012	31-70	±0.305
2.757-3.937	±0.016	71-100	±0.406
3.938-5.096	±0.020	101-150	±0.508
5.097-7.874	±0.024	151-200	±0.610
7.875-9.843	±0.032	201-250	±0.813

ANGULAR TOLERANCE ± 2°

PROPRIETARY AND CONFIDENTIAL

The CARY COMPANY
Est. 1895

TheCaryCompany.com | 630.629.6600



DISTRIBUTION CODE
D

DRAWING NAME
28-400 RNF Model RNF

DRAWING NUMBER
CQA -

DRAWN BY: CAN 8/2/2019

ENG APPR: CAN 8/2/2019

QA APPR: SSK 8/2/2019

MATERIAL

MODEL NUMBER:

SCALE	SHEET SIZE	SHEET	REV/N/P
1:2	8.5 X 11	3 of 3	00.AA