

# IF YOU...



MIX IT. FILL IT. PACK IT. SHIP IT.

# WE HAVE A **PRODUCT** FOR YOU

Part #: 67WD90

---

---

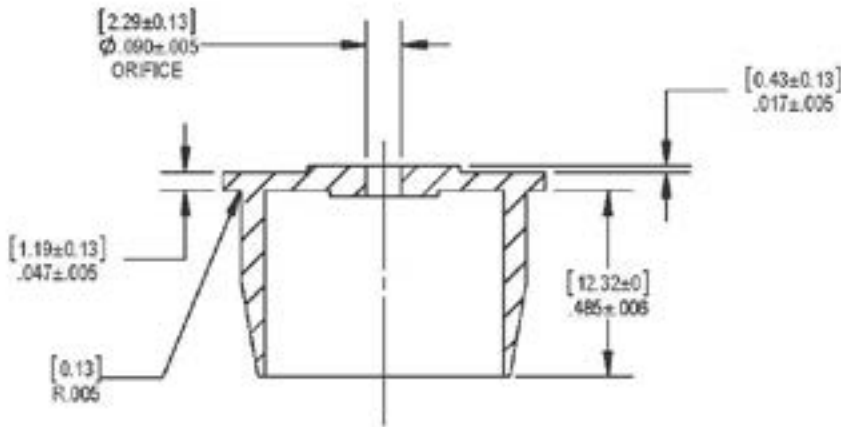
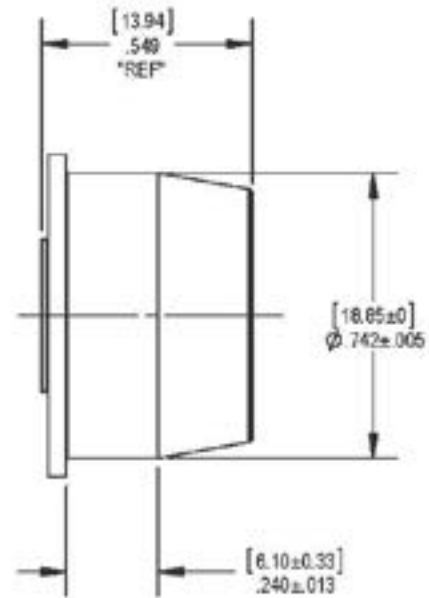
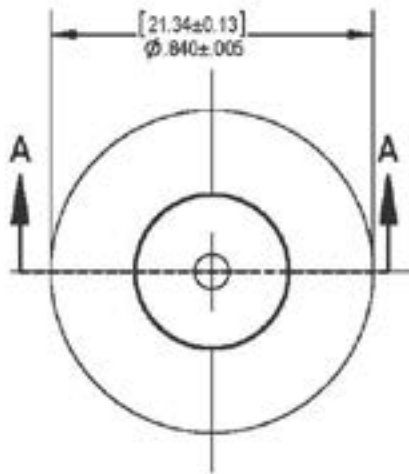


---

The  
**CARY**COMPANY  
Est. 1895

1195 W. Fullerton Ave. | Addison, IL 60101 | T: 630.629.6600 | F: 630.629.3690 |

# Part Specification Drawing



**SECTION A-A**



THE CLOSURE DIMENSIONS DEPICTED ARE THOSE WHICH HAVE GENERALLY BEEN FOUND TO BE FUNCTIONAL BASED ON INDUSTRY EXPERIENCE BECAUSE OF VARIABILITY IN GLASS AND PLASTIC CONTAINER FINISHES, EACH CLOSURE/FINISH SYSTEM SHOULD BE INDIVIDUALLY EVALUATED AND TESTED TO ENSURE IT MEETS APPLICABLE PERFORMANCE CRITERIA. SEE QUALITY ASSURANCE SPECIFICATIONS FOR ADDITIONAL INFORMATION.

DRAWING TYPE : CUSTOMER DETAIL			
DIMENSIONS ENCLOSED IN ( ) INDICATE REFERENCE DIMENSIONS AND NO TOLERANCE LIMITS ARE ESTABLISHED			
TOLERANCES UNLESS OTHERWISE SPECIFIED			
DIMENSION (inches)	TOLERANCE	DIMENSION (mm)	TOLERANCE
0-0.787	±0.008	0-20	±0.008
0.788-1.181	±0.008	21-30	±0.009
1.182-2.756	±0.012	31-70	±0.012
2.757-3.937	±0.016	71-100	±0.016
3.938-5.096	±0.020	101-150	±0.020
5.097-7.874	±0.024	151-200	±0.024
7.875-9.843	±0.032	201-250	±0.032

ANGULAR TOLERANCE: ±2°

**PROPRIETARY AND CONFIDENTIAL**

THIS DRAWING IS PROTECTED BY COPYRIGHT AND CONTAINS INFORMATION PROPRIETARY TO THE CARY COMPANY. ANY REPRODUCTION, DISSEMINATION, OR USE OF ITS CONTENTS OR ANY PART THEREOF, IS PROHIBITED EXCEPT AS THE CARY COMPANY OTHERWISE MAY AGREE IN WRITING.

The **CARY COMPANY**  
Est. 1895

THIRD ANGLE PROJECTION	DISTRIBUTION CODE	DRAWING NAME
	D	<b>DISPENSING PLUG</b>
DRAWN BY	JFR	DRAWING NUMBER
ENG APPR.		10-1923
MFG APPR.		MATERIAL
		LDPE
		MODEL NUMBER: 10-1923
		SCALE
		2:1
		SHEET SIZE
		8 1/2 x 11
		SHEET
		1 of 3
		DATE
		01
		APP
		AA

# Notes, Options & Revision History

DRAWING STATUS			REVISION HISTORY	DWA	END
DATE	REV	REP			

## STATIC TORQUE RECOMMENDATION in-lbs

THIS REQUIREMENT MAY VARY DEPENDING UPON BOTTLE MATERIAL, NECK FINISH, AND CAPPING EQUIPMENT

WEATHERCHEM LOCATION	STULL TECH. LOCATION	MOLD-RITE LOCATION

### STANDARD COLORS

WHITE		
YELLOW		
RED		
BLUE		
BLACK	See Specification Sheet	See Specification Sheet
GREEN		
BROWN		
GOLD		
SILVER		

### SHIPPING INFORMATION

-2300 Pieces per Carton		
-42 Cartons per Pallet		
- Carton Dimensions 21.25"x15.75"x11.75"	See Specification Sheet	See Specification Sheet
- Carton Weight: 28 lbs		
- 96,600 Pieces per Pallet		
- Pallet Dimensions 49"x44"x8"		

### SPECIAL HANDLING INFORMATION

## AVAILABLE OPTIONS



Part Weight  
1.19 grams

THE CLOSURE DIMENSIONS DEPICTED ARE THOSE WHICH HAVE GENERALLY BEEN FOUND TO BE FUNCTIONAL BASED ON INDUSTRY EXPERIENCE BECAUSE OF VARIABILITY IN GLASS AND PLASTIC CONTAINER FINISHES, EACH CLOSURE/FINISH SYSTEM SHOULD BE INDIVIDUALLY EVALUATED AND TESTED TO ENSURE IT MEETS APPLICABLE PERFORMANCE CRITERIA. SEE QUALITY ASSURANCE SPECIFICATIONS FOR ADDITIONAL INFORMATION.

### DRAWING TYPE : CUSTOMER DETAIL

DIMENSIONS ENCLOSED IN ( ) INDICATE REFERENCE DIMENSIONS AND NO TOLERANCE LIMITS ARE ESTABLISHED

TOLERANCES UNLESS OTHERWISE SPECIFIED

DIMENSION (inches)	TOLERANCE	DIMENSION (mm)	TOLERANCE
0-0.787	±0.008	0-20	±0.008
0.788-1.181	±0.008	21-30	±0.009
1.182-2.756	±0.012	31-70	±0.012
2.757-3.937	±0.016	71-100	±0.016
3.938-5.096	±0.020	101-150	±0.020
5.097-7.874	±0.024	151-200	±0.024
7.875-9.843	±0.032	201-250	±0.032

ANGULAR TOLERANCE: ±2°

### PROPRIETARY AND CONFIDENTIAL

THIS DRAWING IS PROTECTED BY COPYRIGHT AND CONTAINS INFORMATION PROPRIETARY TO THE CARY COMPANY. ANY REPRODUCTION, DISCLOSURE, OR USE OF ITS CONTENTS OR ANY PART THEREOF, IS PROHIBITED EXCEPT AS THE CARY COMPANY OTHERWISE AGREES IN WRITING.

The  
**CARY COMPANY**  
Est. 1895



THIRD ANGLE PROJECTION



DISTRIBUTION CODE

D

DRAWING NAME

**DISPENSING PLUG**

DRAWING NUMBER

10-1923

MATERIAL

-----

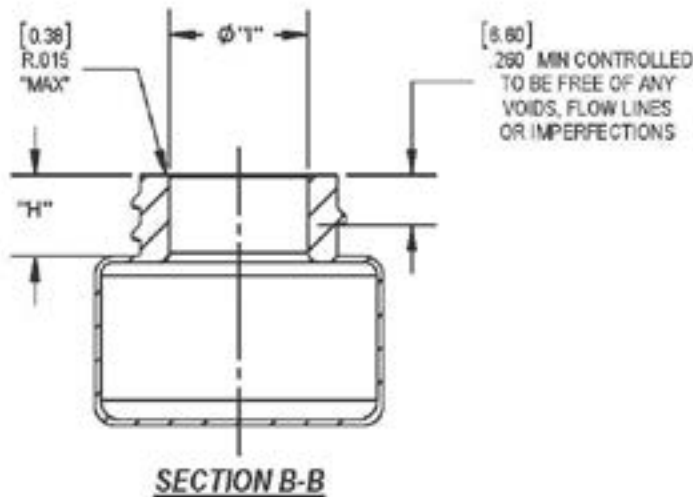
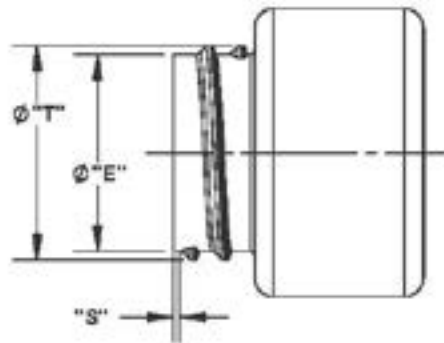
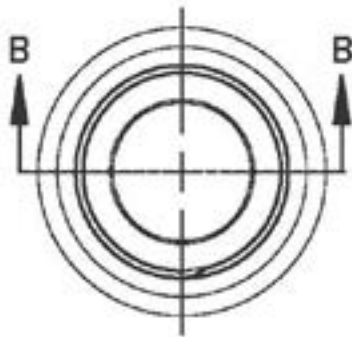
SCALE: 1:1    SHEET SIZE: 8 1/2 x 11    SHEET: 2 of 3    DWG. NO.: 01    REV: AA

DRAWN BY: REFER TO PAGE 1

ENG APPR: REFER TO PAGE 1

MFG APPR: REFER TO PAGE 1

# Recommended Neck Finish



	T		E		I		S		H		TPI	Pitch
	Max	Min	Max	Min	Max	Min	Max	Min	Max	Min		
In	1.127	1.107	1.033	1.013	0.732	0.722	0.061	0.031	0.418	0.388	6	0.167
mm	28.62	28.12	26.24	25.73	18.59	18.34	1.55	0.79	10.62	9.85	6	4.24

THE CLOSURE DIMENSIONS DEPICTED ARE THOSE WHICH HAVE GENERALLY BEEN FOUND TO BE FUNCTIONAL BASED ON INDUSTRY EXPERIENCE BECAUSE OF VARIABILITY IN GLASS AND PLASTIC CONTAINER FINISHES, EACH CLOSURE/FINISH SYSTEM SHOULD BE INDIVIDUALLY EVALUATED AND TESTED TO ENSURE IT MEETS APPLICABLE PERFORMANCE CRITERIA. SEE QUALITY ASSURANCE SPECIFICATIONS FOR ADDITIONAL INFORMATION.

DRAWING TYPE : CUSTOMER DETAIL

DIMENSIONS ENCLOSED IN ( ) INDICATE REFERENCE DIMENSIONS AND NO TOLERANCE LIMITS ARE ESTABLISHED

TOLERANCES UNLESS OTHERWISE SPECIFIED

DIMENSION (inches)	TOLERANCE	DIMENSION (mm)	TOLERANCE
0-0.787	$\pm 0.008$	0-20	$\pm 0.025$
0.788-1.181	$\pm 0.008$	21-30	$\pm 0.023$
1.182-2.756	$\pm 0.012$	31-70	$\pm 0.012$
2.757-3.937	$\pm 0.016$	71-100	$\pm 0.018$
3.938-5.096	$\pm 0.020$	101-150	$\pm 0.022$
5.097-7.074	$\pm 0.024$	151-200	$\pm 0.024$
7.075-9.843	$\pm 0.032$	201-250	$\pm 0.032$

ANGULAR TOLERANCE:  $\pm 2^\circ$

The **CARY COMPANY**  
Est. 1895

THIRD ANGLE PROJECTION	DISTRIBUTION CODE	DRAWING NAME
	D	RECOMMENDED NECK FINISH FOR 10-1923
DRAWN BY:	REFER TO PAGE 1	DRAWING NUMBER
ENG APPR:	REFER TO PAGE 1	10-1923
MFG APPR:	REFER TO PAGE 1	MATERIAL
		SCALE
		1:1
		SHEET SIZE
		8 1/2 x 11
		SHEET
		3 of 3
		REV
		01
		AA

**PROPRIETARY AND CONFIDENTIAL**

THIS DRAWING IS PROTECTED BY COPYRIGHT AND CONTAINS INFORMATION PROPRIETARY TO THE CARY COMPANY. ANY REPRODUCTION, DISCLOSURE, OR USE OF ITS CONTENTS OR ANY PART THEREOF, IN WHOLE OR IN PART, IS PROHIBITED EXCEPT AS THE CARY COMPANY OTHERWISE MAY AGREE IN WRITING.