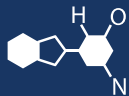


# IF YOU...



MIX IT. FILL IT. PACK IT. SHIP IT.

## WE HAVE A **PRODUCT** FOR YOU

Part #: 67WE1F

Continuous Thread Caps

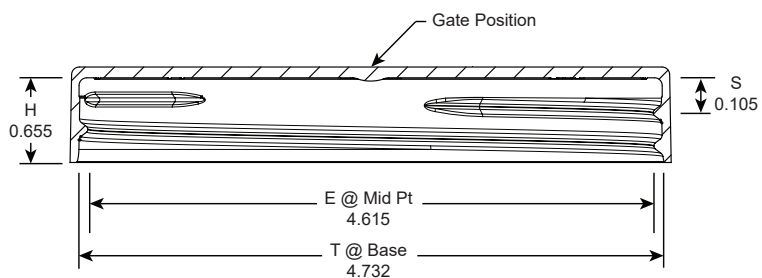
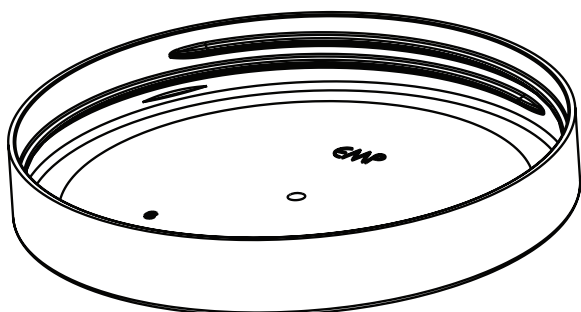
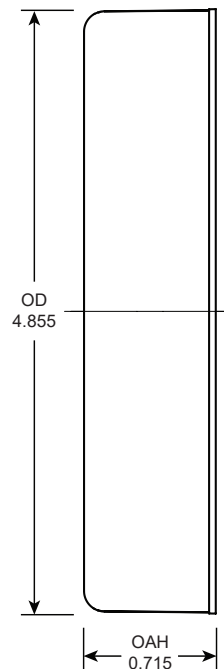
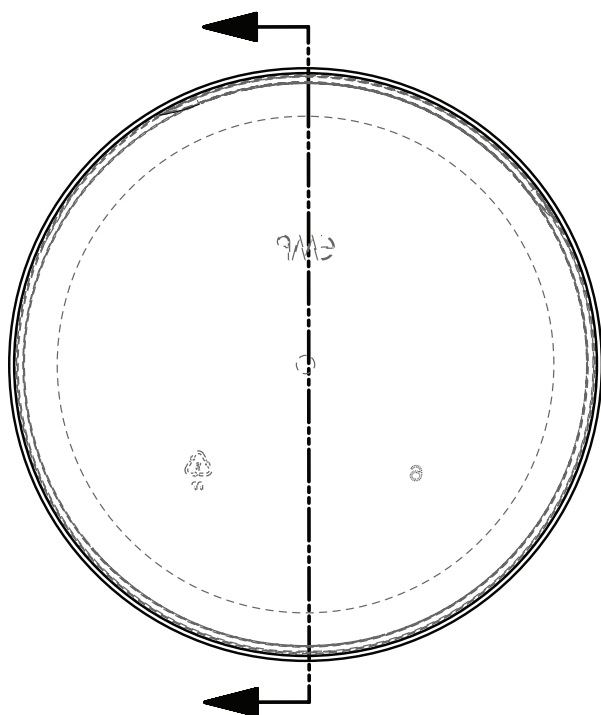
120mm 120-400 White Smooth Plastic Cap  
w/PS-113 Liner




The  
**CARY**COMPANY  
Est. 1895

1195 W. Fullerton Ave. | Addison, IL 60101 | T: 630.629.6600 | F: 630.629.3690 |

# 120-400 SM



Inch tolerances (unless specified) General: +/- .010 "/>"		
Number of turns: 1.25		
Pitch (TPI): 5	Max Deck Dip: 0.150	120-400 SM
Material: PP		
		Date: July 11, 2014 Sheet: 01 of 01