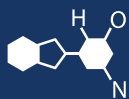


# IF YOU...



MIX IT. FILL IT. PACK IT. SHIP IT.

# WE HAVE A **PRODUCT** FOR YOU

Part #: 67WH24

Continuous Thread Caps

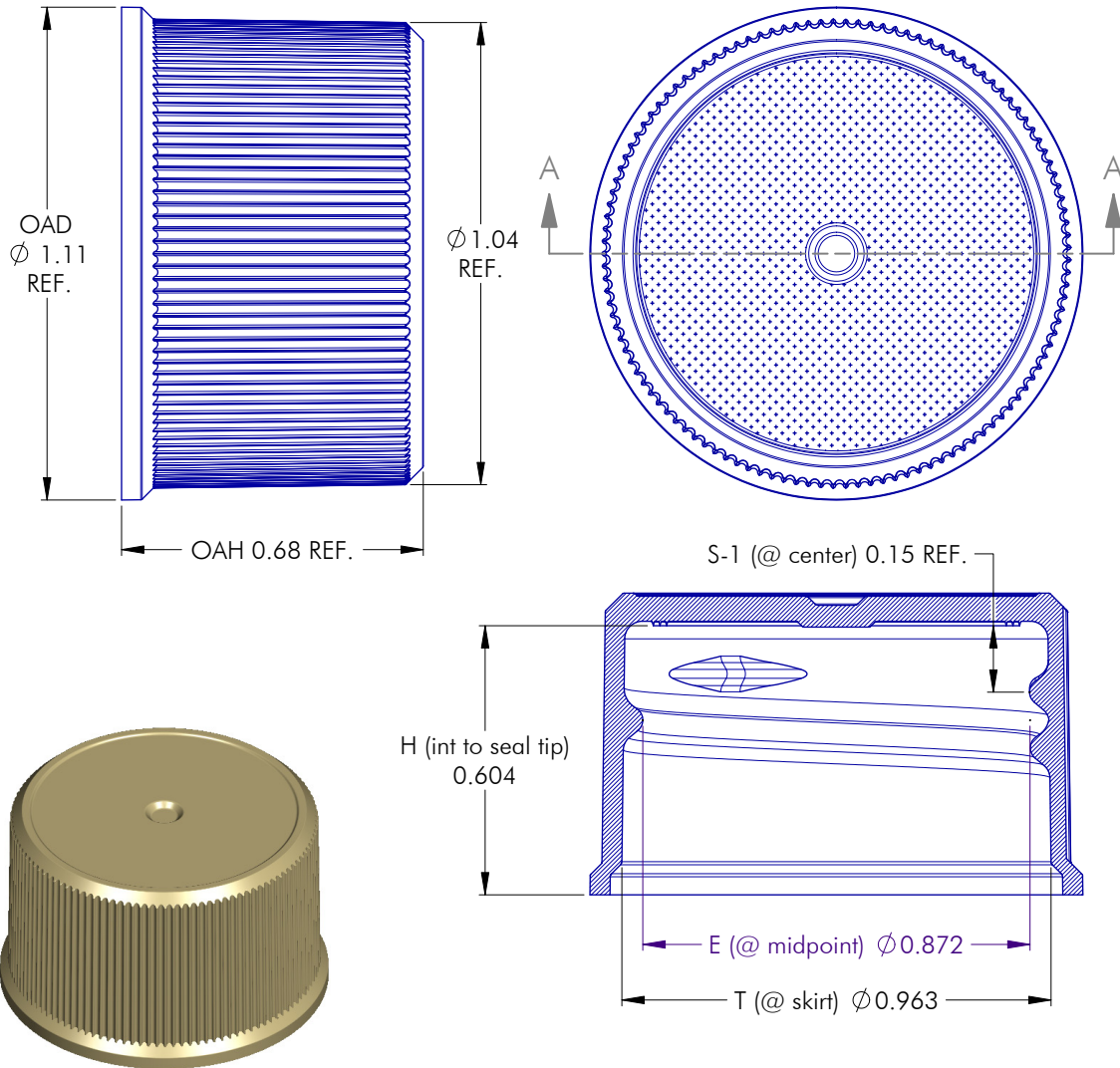
24mm 24-410 Ribbed (Matte Top) Plastic  
Cap w/.020" HIS Liner for HDPE



The  
**CARY**COMPANY  
Est. 1895

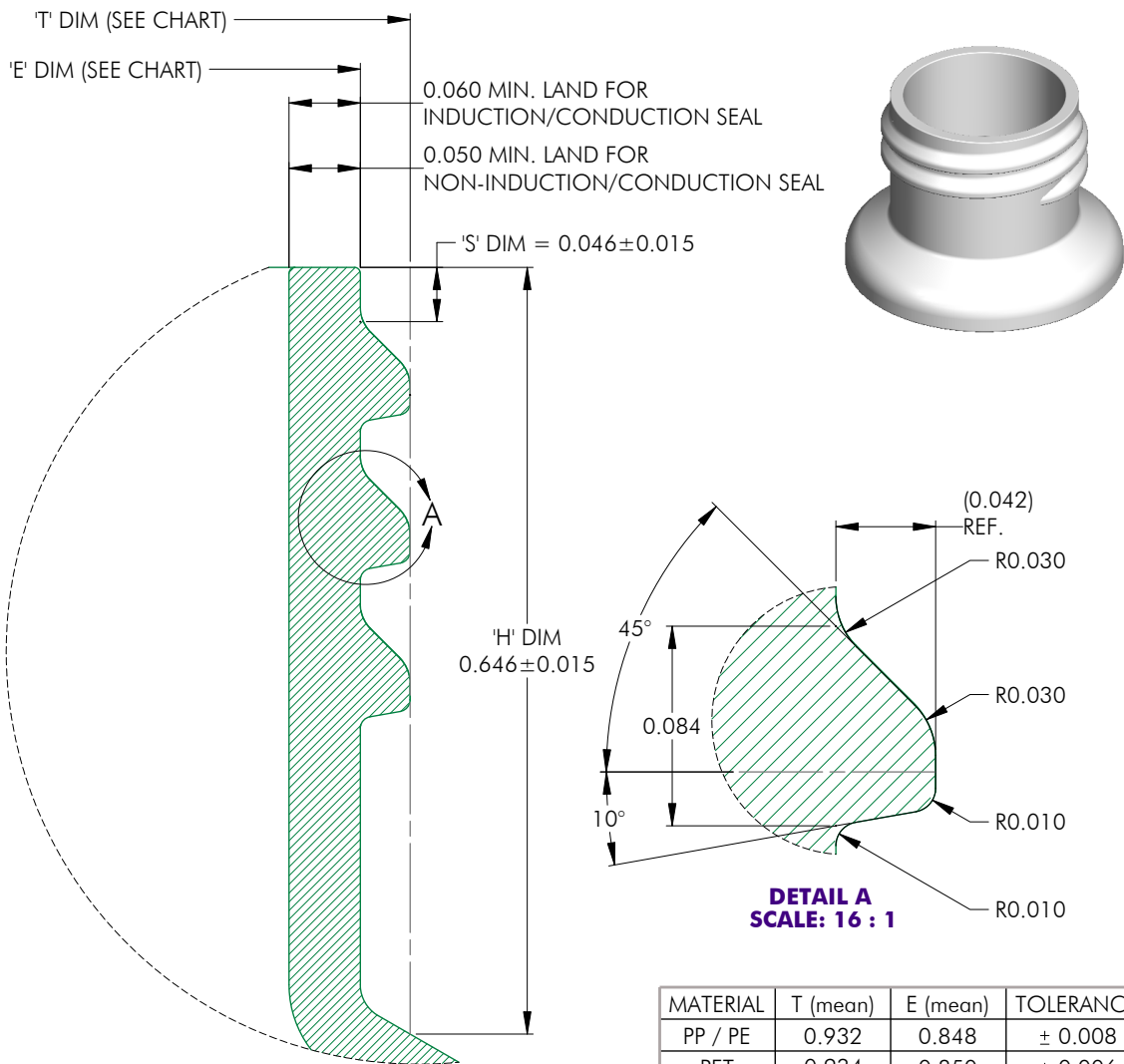
1195 W. Fullerton Ave. | Addison, IL 60101 | T: 630.629.6600 | F: 630.629.3690 |

# MEDIUM & DEEP SKIRTED CLOSURES



NOTES: (UNLESS OTHERWISE SPECIFIED)				5	09.26.11	Modified Interior Wall	DN
1. ALL DIMENSIONS ARE IN INCHES.				REV	DATE	DESCRIPTION	BY
2. SEE CHART FOR DIMENSIONAL TOLERANCE.				TOLERANCE	PITCH/TPI	TURNS	MAT'L
				.X ±0.1	.125 / 8	1-1/8	PP
				.XX ±0.02	DRAWN	DATE	SCALE
				.XXX ±0.010	BEZ	07.11.04	3 : 1
							REV
							5

# MEDIUM & DEEP SKIRTED CLOSURES



MATERIAL	T (mean)	E (mean)	TOLERANCE
PP / PE	0.932	0.848	± 0.008
PET	0.934	0.850	± 0.006
GLASS	N/A	N/A	± N/A

NOTES: (UNLESS OTHERWISE SPECIFIED)		0		10.19.04		Released		BZ	
1. ALL DIMENSIONS ARE IN INCHES.		REV	DATE	DESCRIPTION				BY	
2. SEE CHART FOR DIMENSIONAL TOLERANCE.		TOLERANCE	PITCH/TPI	.125 / 8	TURNS	2	MAT'L PER CHART		
.X	±0.1	DRAWN	BEZ	DATE	10.19.04	SCALE	8 : 1		REV
.XX	±0.02								0
.XXX	±0.010								