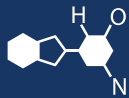


IF YOU...



MIX IT. FILL IT. PACK IT. SHIP IT.

WE HAVE A **PRODUCT** FOR YOU

Part #: 67WNCB

Plastic Industrial Round & Square Jugs

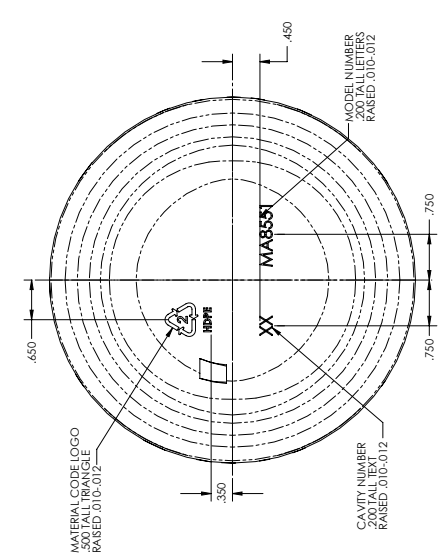
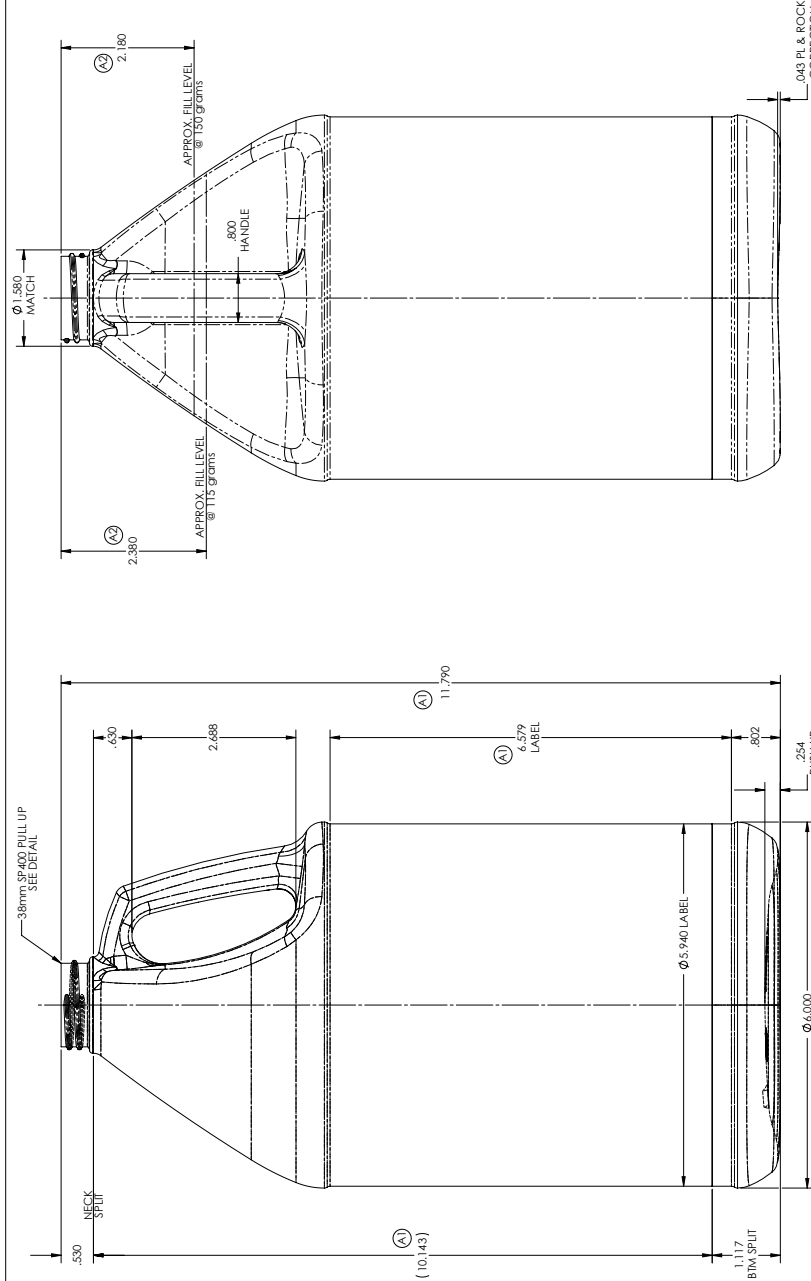
1 Gallon Natural HDPE Plastic Round Jug,
38mm 38-400, Large Label Panel, 120 Grams



The
CARYCOMPANY
Est. 1895

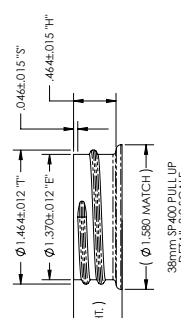
1195 W. Fullerton Ave. | Addison, IL 60101 | T: 630.629.6600 | F: 630.629.3690 |

REV.	DESCRIPTION	DATE	APPROVED
A	1) REMOVED IN 3) OVERFLOW VOLUMES	4/16/2020	MIS



NECK DETAIL THROUGH PULL UP
 38mm SP400 PULL UP
 REF SPEC #1787 Rev.D
 3:2 SCALE

NOTES:
 1) STYLITE THREAD
 2) 8 THREADS PER INCH
 3) 2 TURNS OF THREAD AT FULL DEPTH
 4) THREAD START AT CLIN BUSHING HALF



NOTES:
 1) STYLITE THREAD
 2) 6 THREADS PER INCH
 3) 1-1/2 TURNS OF THREAD AT FULL DEPTH
 4) THREADS START AT CLIN PIN HALF

The CARY COMPANY
 Est. 1925

Drawn By: M.J.S	Date: 4/6/2020	Customer Date:	Product Drawing
Checked: BRH	Date: 4/6/2020	Weight: 115.150 grams	One Color Industrial Round
Customer:	Fill Level: 28.0 oz	Material:	HDPE
Job#: 34.620	Overhaul:	SEE NOTES	Part #
Reference Material:	Material:	HDPE	Part A
	Part #:	MAB851-2	Part 1
	Part #:		Part 2

Notes:
 1) Tolerances Unless Specified:
 Vertical -- ±.030
 Horizontal -- ±.010
 2) Bottles to be Checked Aged with 20°C Water
 3) Estimated Bulge -- None
 4) Overage -- None
 134.00oz @ 115 grams
 132.80oz @ 150 grams