

IF YOU...



MIX IT. FILL IT. PACK IT. SHIP IT.

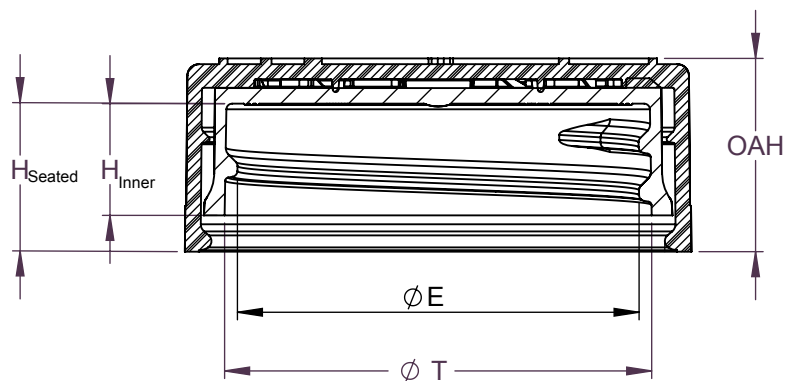
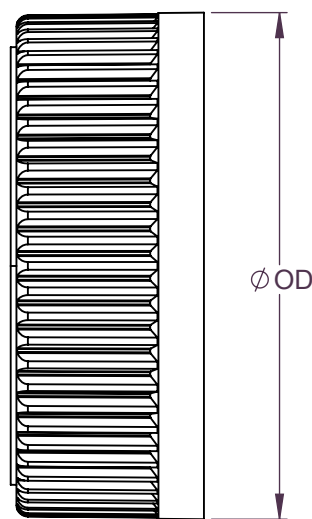
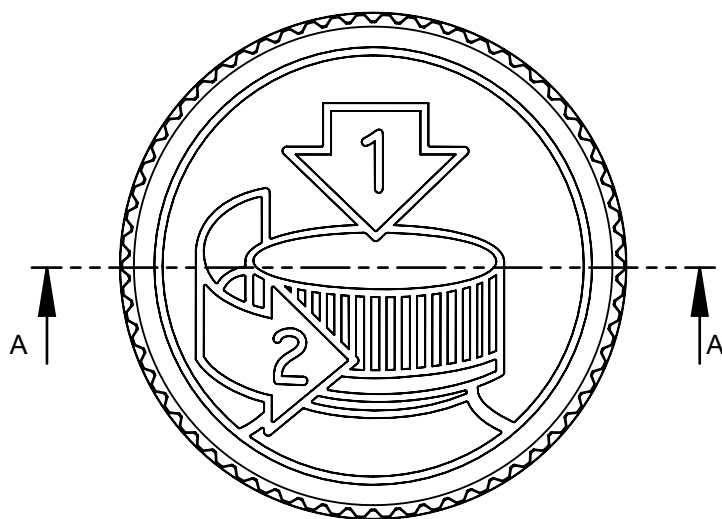
WE HAVE A **PRODUCT** FOR YOU

Part #: 68B3CW



The
CARYCOMPANY
Est. 1895

1195 W. Fullerton Ave. | Addison, IL 60101 | T: 630.629.6600 | F: 630.629.3690 |



SECTION A-A
SCALE 3 : 2

.167 PITCH - 6 THREADS PER INCH
380° FULL DEPTH THREAD

REFERENCE	TOLERANCE	DIMENSION	UNITS
E	±0.010 [0.25]	1.396 [35.46]	in [mm]
T	±0.010 [0.25]	1.488 [37.80]	in [mm]
H (Seated)	REFERENCE	0.521 [13.23]	in [mm]
H (Inner)	±0.008 [0.20]	0.388 [9.86]	in [mm]
OD	±0.013 [0.33]	1.760 [44.70]	in [mm]
OAH	±0.011 [0.28]	0.671 [17.04]	in [mm]
PART WEIGHT	± 0.7	7.1	g

STATIC TORQUE RECOMMENDATION
17-26 in-lbs
THIS REQUIREMENT MAY VARY DEPENDING
UPON BOTTLE MATERIAL, NECK FINISH, AND
CAPPING EQUIPMENT

DRAWING TYPE : CUSTOMER

REPLACES DRAWINGS:
C-8019

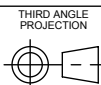
DIMENSIONS ENCLOSED IN ()
INDICATE REFERENCE
DIMENSIONS AND NO TOLERANCE
LIMITS ARE ESTABLISHED

TOLERANCES UNLESS OTHERWISE SPECIFIED

DIMENSION (inches)	TOLERANCE	DIMENSION (mm)	TOLERANCE
0-0.787	±0.006	0-20	±0.152
0.788-1.181	±0.008	21-30	±0.203
1.182-2.756	±0.012	31-70	±0.305
2.757-3.937	±0.016	71-100	±0.406
3.938-5.096	±0.020	101-150	±0.508
5.097-7.874	±0.024	151-200	±0.610
7.875-9.843	±0.032	201-250	±0.813

ANGULAR TOLERANCE ± 2°

The
CARY COMPANY
Est. 1895



THIRD ANGLE
PROJECTION



DISTRIBUTION
CODE
D

DRAWING NAME

38-400 CRC ASSM
PICTO

DRAWING NUMBER

CQA - 10023

MATERIAL

POLYPROPYLENE

MODEL NUMBER

PM-10161 38-400 CRC ASSM

SCALE
1:1

SHEET SIZE
11in*8.5in

SHEET
1 of 3

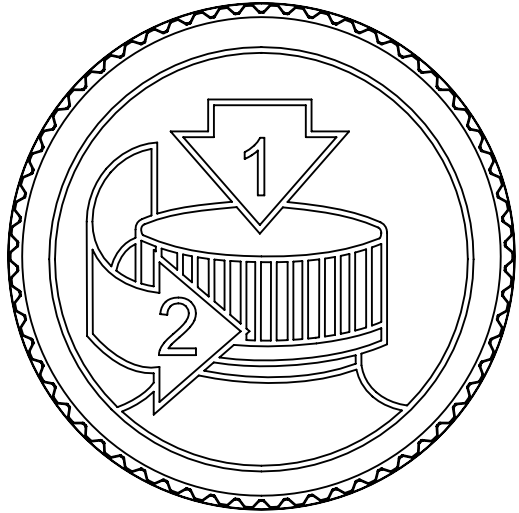
REV.NP
04.AD

THE CLOSURE DIMENSIONS
DEPICTED ARE THOSE WHICH HAVE GENERALLY BEEN
FOUND TO BE FUNCTIONAL BASED ON INDUSTRY
EXPERIENCE BECAUSE OF VARIABILITY IN GLASS AND
PLASTIC CONTAINER FINISHES, EACH CLOSURE/FINISH
SYSTEM SHOULD BE INDIVIDUALLY EVALUATED AND
TESTED TO ENSURE IT MEETS APPLICABLE
PERFORMANCE CRITERIA. SEE QUALITY ASSURANCE
SPECIFICATIONS FOR ADDITIONAL INFORMATION.

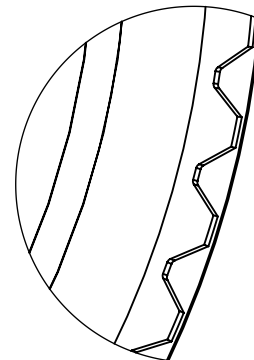
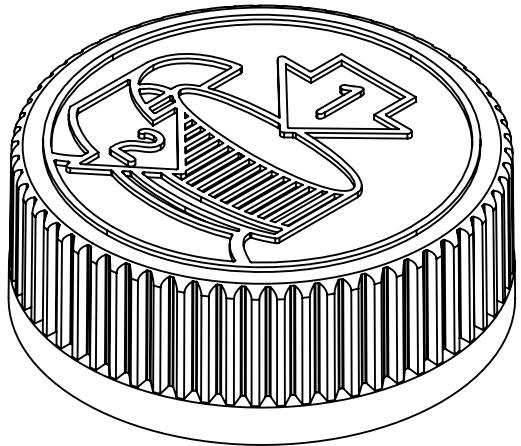
THE CARY COMPANY RESERVES THE RIGHT TO REVISE
ANY OR ALL SPECIFICATIONS AND REQUIREMENTS.

DATE	REV	N/P	DESCRIPTION	ENG	DRWN
01/30/17	04	AD	DRAWING FORMAT UPDATED. ADDED H(SEATED) AS REFERENCE DIMENSION	BDG	BDG

INSTRUCTIONS EMBOSSES



ALTERNATE PICTO
INSTUCTIONS
(SIDE GATED MOLD)



DETAIL RIB
SCALE 6 : 1

(62) EQUISPACED RIBS

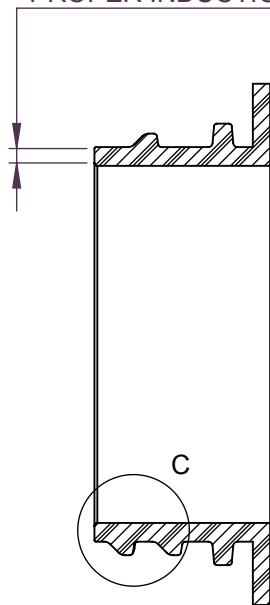
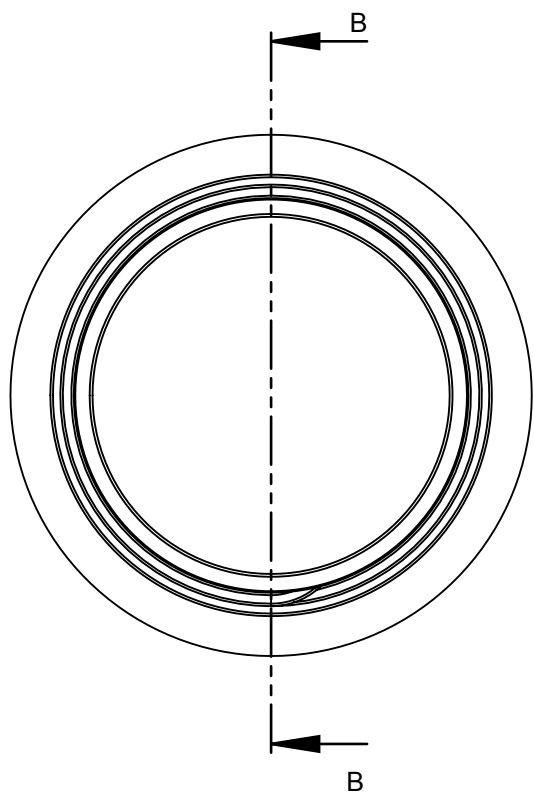
DRAWING TYPE : CUSTOMER			
REFERENCES:		DIMENSIONS ENCLOSED IN () INDICATE REFERENCE DIMENSIONS AND NO TOLERANCE LIMITS ARE ESTABLISHED	
TOLERANCES UNLESS OTHERWISE SPECIFIED			
DIMENSION (inches)	TOLERANCE	DIMENSION (mm)	TOLERANCE
0-0.787	±0.006	0-20	±0.152
0.788-1.181	±0.008	21-30	±0.203
1.182-2.756	±0.012	31-70	±0.305
2.757-3.937	±0.016	71-100	±0.406
3.938-5.096	±0.020	101-150	±0.508
5.097-7.874	±0.024	151-200	±0.610
7.875-9.843	±0.032	201-250	±0.813
ANGULAR TOLERANCE ± 2°			



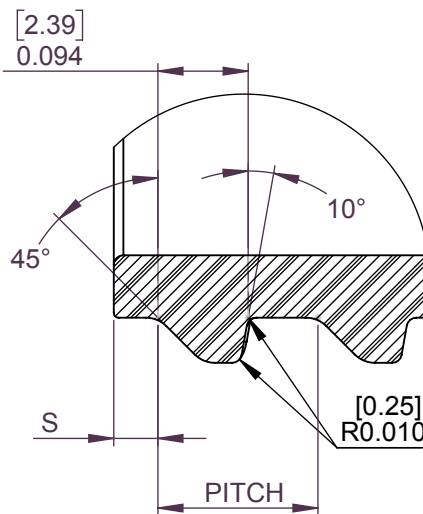
THE CLOSURE DIMENSIONS
DEPICTED ARE THOSE WHICH HAVE GENERALLY BEEN
FOUND TO BE FUNCTIONAL BASED ON INDUSTRY
EXPERIENCE BECAUSE OF VARIABILITY IN GLASS AND
PLASTIC CONTAINER FINISHES. EACH CLOSURE/FINISH
SYSTEM SHOULD BE INDIVIDUALLY EVALUATED AND
TESTED TO ENSURE IT MEETS APPLICABLE
PERFORMANCE CRITERIA. SEE QUALITY ASSURANCE
SPECIFICATIONS FOR ADDITIONAL INFORMATION.
THE CARY COMPANY RESERVES THE RIGHT TO REVISE
ANY OR ALL SPECIFICATIONS AND REQUIREMENTS.

THIRD ANGLE PROJECTION 	DISTRIBUTION CODE D	DRAWING NAME 38-400 CRC ASSM PICTO			
		DRAWING NUMBER CQA - 10023			
DRAWN BY.	BDG	4/29/2016	MATERIAL POLYPROPYLENE		
ENG APPR.	BDG	2/1/2017	MODEL NUMBER PM-10161 38-400 CRC ASSM		
QA APPR.	ACP	2/1/2017	SCALE 1:1	SHEET SIZE 8.5 X 11	SHEET 2 of 3
					REV.NP 04.AD

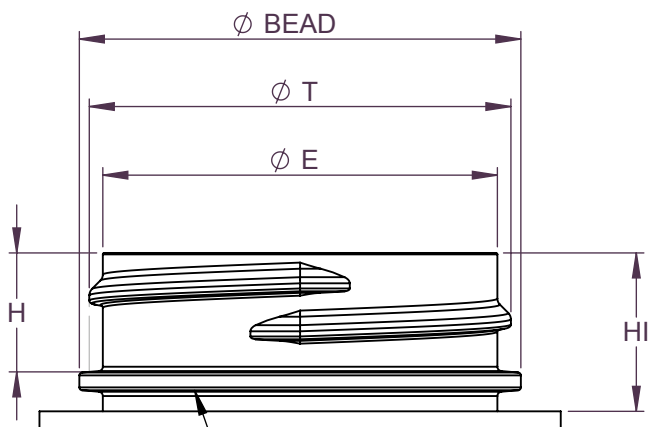
[1.27]
0.050 MINIMUM FLAT
RECOMMENDED FOR
PROPER INDUCTION SEAL



SECTION B-B
SCALE 3 : 2



DETAIL C
SCALE 5 : 1
THREAD DETAIL



BEAD IS NOT REQUIRED
FOR CHILD RESISTANT
CLOSURE FUNCTION

REFERENCE	TOLERANCE	UNITS	DIMENSIONS
E	±0.012 [0.30]	in [mm]	1.370 [34.80]
T	±0.012 [0.30]	in [mm]	1.464 [37.19]
I	MINIMUM	in [mm]	1.225 [31.11]
S	±0.015 [0.38]	in [mm]	0.046 [1.17]
H	MINIMUM	in [mm]	0.403 [10.24]
H1	MINIMUM	in [mm]	.550 [13.97]
BEAD	MAXIMUM	in [mm]	1.545 [39.24]
TPI			6
PITCH		in	0.167 [4.24]

DRAWING TYPE : CUSTOMER

DIMENSIONS ENCLOSED IN () INDICATE REFERENCE DIMENSIONS AND NO TOLERANCE LIMITS ARE ESTABLISHED

TOLERANCES UNLESS OTHERWISE SPECIFIED

DIMENSION (inches)	TOLERANCE	DIMENSION (mm)	TOLERANCE
0-0.787	±0.006	0-20	±0.152
0.788-1.181	±0.008	21-30	±0.203
1.182-2.756	±0.012	31-70	±0.305
2.757-3.937	±0.016	71-100	±0.406
3.938-5.096	±0.020	101-150	±0.508
5.097-7.874	±0.024	151-200	±0.610
7.875-9.843	±0.032	201-250	±0.813

ANGULAR TOLERANCE ± 2°

The
CARY COMPANY
Est. 1895



SOLIDWORKS

DISTRIBUTION CODE

D

DRAWING NAME

38-400 CRC ASSM
RECOMMENDED NECK FINISH

DRAWING NUMBER

CQA - 10023

DRAWN BY.

BDG

4/29/2016

MATERIAL

ENG APPR.

BDG

2/1/2017

MODEL NUMBER:

QA APPR.

ACP

2/1/2017

SCALE

SHEET SIZE

SHEET

REV/N/P

1:1

11 X 11

3 of 3

04.AD

THE CLOSURE DIMENSIONS DEPICTED ARE THOSE WHICH HAVE GENERALLY BEEN FOUND TO BE FUNCTIONAL BASED ON INDUSTRY EXPERIENCE BECAUSE OF VARIABILITY IN GLASS AND PLASTIC CONTAINER FINISHES. EACH CLOSURE/FINISH SYSTEM SHOULD BE INDIVIDUALLY EVALUATED AND TESTED TO ENSURE IT MEETS APPLICABLE PERFORMANCE CRITERIA. SEE QUALITY ASSURANCE SPECIFICATIONS FOR ADDITIONAL INFORMATION.

THE CARY COMPANY RESERVES THE RIGHT TO REVISE ANY OR ALL SPECIFICATIONS AND REQUIREMENTS.