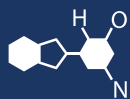


IF YOU...



MIX IT. FILL IT. PACK IT. SHIP IT.

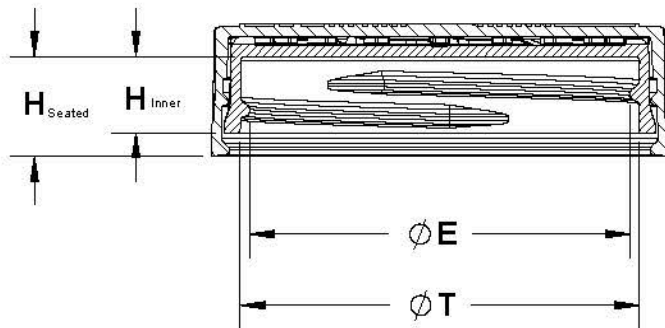
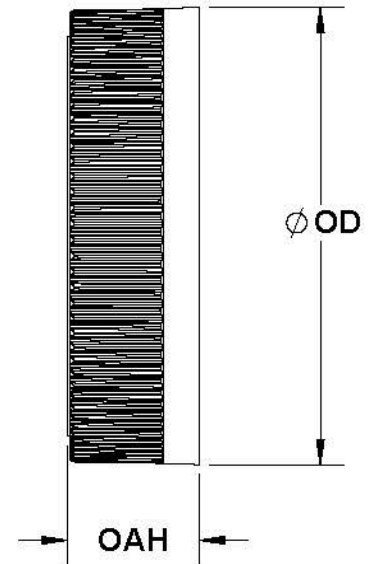
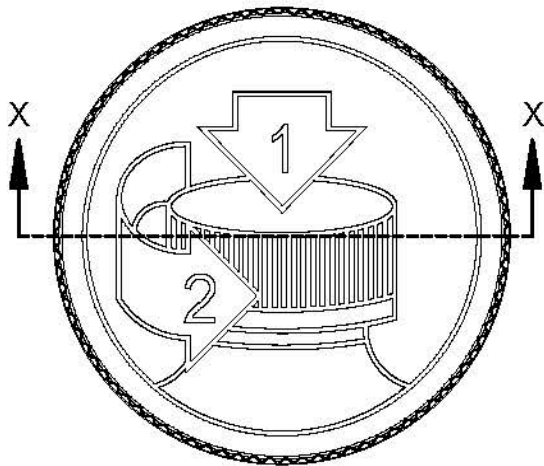
WE HAVE A **PRODUCT** FOR YOU

Part #: 68B5KP



The
CARYCOMPANY
Est. 1895

1195 W. Fullerton Ave. | Addison, IL 60101 | T: 630.629.6600 | F: 630.629.3690 |



SECTION X-X
SCALE 1 : 1

6 THREADS PER INCH, .167 PITCH,
380° FULL DEPTH THREAD

REFERENCE	TOLERANCE	DIMENSION	UNITS
E	±0.012 [0.30]	1.985 [50.42]	in [mm]
T	±0.012 [0.30]	2.079 [52.81]	in [mm]
H [Seated]	REFERENCE	0.521 [13.23]	in [mm]
H [INNER]	±0.012 [0.30]	0.398 [10.11]	in [mm]
OD	±0.018 [0.46]	2.388 [60.66]	in [mm]
OAH	±0.020 [0.51]	0.690 [17.53]	in [mm]
PART WEIGHT	± 1.4	12.8	g

STATIC TORQUE RECOMMENDATION
21-36 in-lbs
THIS REQUIREMENT MAY VARY DEPENDING
UPON BOTTLE MATERIAL, NECK FINISH, AND
CAPPING EQUIPMENT

THE CLOSURE DIMENSIONS
DEPICTED ARE THOSE WHICH HAVE GENERALLY BEEN
FOUND TO BE FUNCTIONAL BASED ON INDUSTRY
EXPERIENCE BECAUSE OF VARIABILITY IN GLASS AND
PLASTIC CONTAINER FINISHES, EACH CLOSURE/FINISH
SYSTEM SHOULD BE INDIVIDUALLY EVALUATED AND
TESTED TO ENSURE IT MEETS APPLICABLE
PERFORMANCE CRITERIA. SEE QUALITY ASSURANCE
SPECIFICATIONS FOR ADDITIONAL INFORMATION.

THE CARY COMPANY RESERVES THE RIGHT TO REVISE
ANY OR ALL SPECIFICATIONS AND REQUIREMENTS.

DRAWING TYPE: **CUSTOMER**

REPLACES DRAWINGS:
C-8026

DIMENSIONS ENCLOSED IN ()
INDICATE REFERENCE
DIMENSIONS AND NO TOLERANCE
LIMITS ARE ESTABLISHED

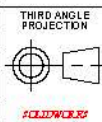
TOLERANCES UNLESS OTHERWISE SPECIFIED

DIMENSION (inches)	TOLERANCE	DIMENSION (mm)	TOLERANCE
0-0.787	±0.006	0-20	±0.152
0.788-1.181	±0.008	21-30	±0.203
1.182-2.756	±0.012	31-70	±0.305
2.757-3.937	±0.016	71-100	±0.406
3.938-5.096	±0.020	101-150	±0.508
5.097-7.874	±0.024	151-200	±0.610
7.875-9.843	±0.032	201-250	±0.813

ANGULAR TOLERANCE ± 2°

P: 630-629-6600 | F: 630-629-3690
1195 W. Fullerton Ave. Addison, IL 60101
www.thecarycompany.com

The
CARY COMPANY
Est. 1895



DISTRIBUTION
CODE
D

DRAWING NAME

53-400 CRC Assm
PCTO

DRAWING NUMBER

CQA - 10095

MATERIAL

POLYPROPYLENE

MODEL NUMBER:

PM 10135 53-400 PDT CRC Assm

SCALE

1:2

SHEET SIZE

8.5" X 11"

SHEET

1 of 3

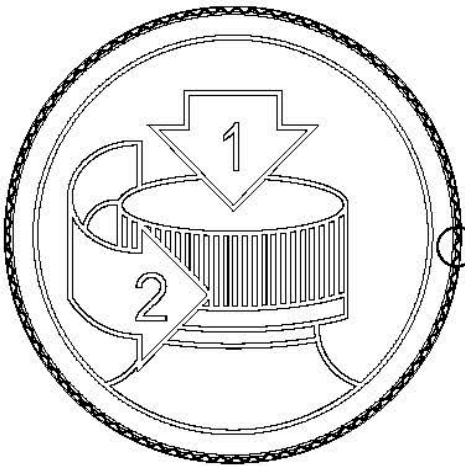
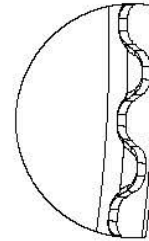
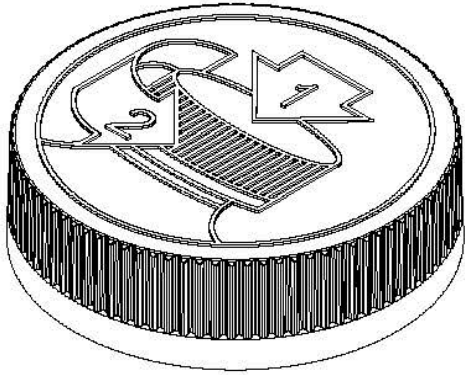
REV/MP

02.AC

DRAWN BY: BDG
ENG APPR: BDG
QA APPR: REL

DATE: 3/1/2016
DATE: 9/11/2018
DATE: 9/11/2018

REVISION HISTORY					
DATE	REV	N/P	DESCRIPTION	ENG	DRW
03/11/15	01	AA	DRAWING RELEASED	BDG	-
09/29/15	01	AB	UPDATED SPECIFICATIONS BASED ON PRODUCTION VALIDATION	BDG	-
02/10/16	02	AA	UPDATED ASSEMBLY MODEL WITH REVISED INNER. CRC ENGINE ANGLE REVISED	BDG	-
07/07/16	02	AB	UPDATED SPECIFICATION BASED ON RE-QUALIFICATION OF MOLDS	BDG	-
09/11/18	02	AC	UPDATED DRAWING FORMAT. CORRECTED (mm) CONVERSION FOR "I" DIMENSION PAGE 3	BDG	BDG



DETAIL RIB
SCALE 6 : 1
(88) EQUISPACED RIBS

DRAWING TYPE: CUSTOMER			
REFERENCES:		DIMENSIONS ENCLOSED IN () INDICATE REFERENCE DIMENSIONS AND NO TOLERANCE LIMITS ARE ESTABLISHED	
TOLERANCES UNLESS OTHERWISE SPECIFIED			
DIMENSION (inches)	TOLERANCE	DIMENSION (mm)	TOLERANCE
0-0.787	±0.006	0-20	±0.152
0.788-1.181	±0.008	21-30	±0.203
1.182-2.756	±0.012	31-70	±0.305
2.757-3.937	±0.016	71-100	±0.406
3.938-5.096	±0.020	101-150	±0.508
5.097-7.874	±0.024	151-200	±0.610
7.875-9.843	±0.032	201-250	±0.813
ANGULAR TOLERANCE ± 2°			



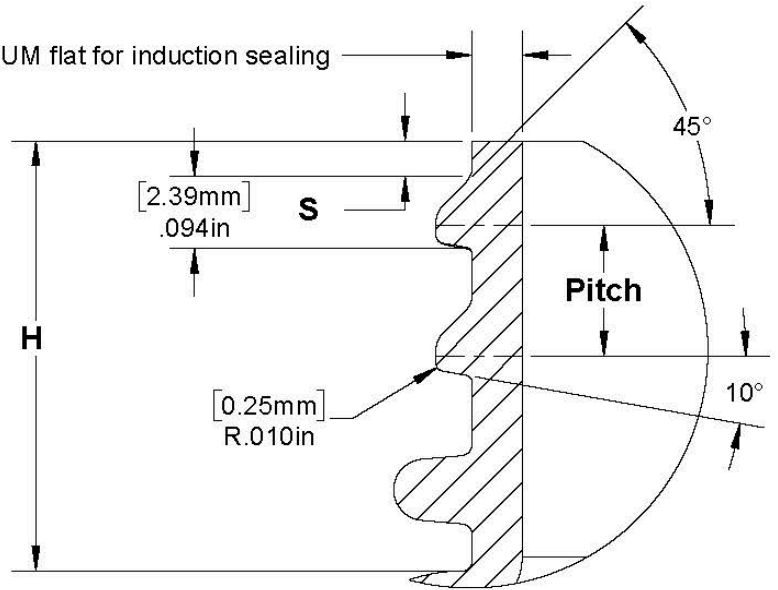
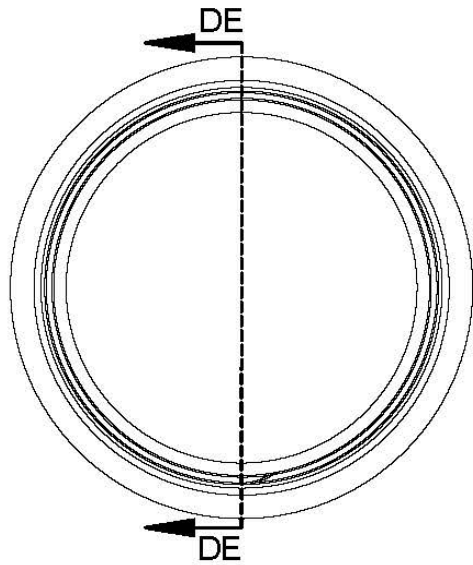
THE CLOSURE DIMENSIONS DEPICTED ARE THOSE WHICH HAVE GENERALLY BEEN FOUND TO BE FUNCTIONAL BASED ON INDUSTRY EXPERIENCE BECAUSE OF VARIABILITY IN GLASS AND PLASTIC CONTAINER FINISHES, EACH CLOSURE/FINISH SYSTEM SHOULD BE INDIVIDUALLY EVALUATED AND TESTED TO ENSURE IT MEETS APPLICABLE PERFORMANCE CRITERIA. SEE QUALITY ASSURANCE SPECIFICATIONS FOR ADDITIONAL INFORMATION.

THE CARY COMPANY TECHNOLOGIES RESERVES THE RIGHT TO REVISE ANY OR ALL SPECIFICATIONS AND REQUIREMENTS.

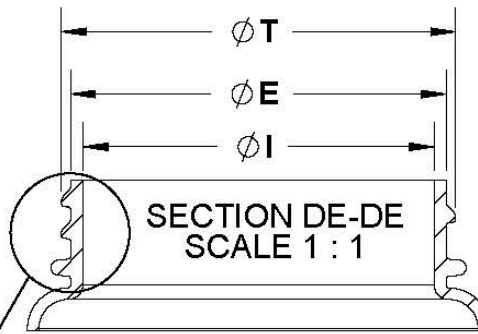
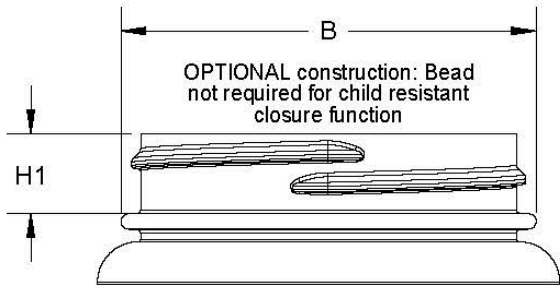
THIRD ANGLE PROJECTION	DISTRIBUTION CODE	DRAWING NAME	
	D	53-400 CRC Assm PICTO	
DRAWING NUMBER		CQA - 10095	
MATERIAL		POLYPROPYLENE	
DRAWN BY: BDG		3/1/2016	MODEL NUMBER:
ENG APPR: BDG		9/11/2018	PM 10135 53-400 PDT CRC Assm
QA APPR: REL		9/11/2018	SCALE
			SHEET SIZE
			SHEET
			REV/NP
			02 AC
			2 of 3
			8.5" X 11"
			1:2

P: 630-629-6600 | F: 630-629-3690
1195 W. Fullerton Ave. Addison, IL 60101
www.thecarycompany.com

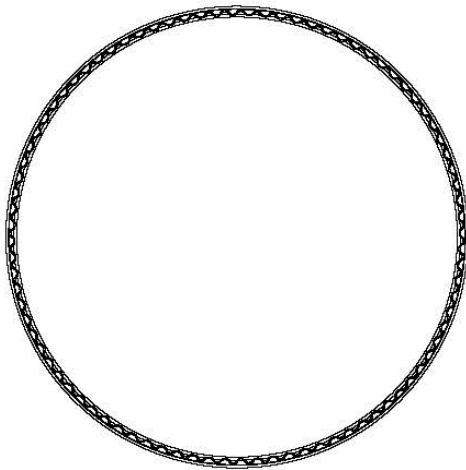
0.050 MINIMUM flat for induction sealing



DETAIL Thread
SCALE 4 : 1



Thread



REFERENCE	TOLERANCE	UNITS	DIMENSION
E	± 0.017 [0.43]	in [mm]	1.956 [49.68]
T	± 0.017 [0.43]	in [mm]	2.050 [52.07]
I	MINIMUM	in [mm]	1.578 [40.08]
S	±0.015[0.38]	in [mm]	0.046 [1.17]
H	MINIMUM	in [mm]	0.560 [14.22]
H1	MINIMUM	in [mm]	0.410 [10.41]
B	MAXIMUM	in [mm]	2.160 [54.86]
TPI			6
PITCH		in [mm]	0.167 [4.24]

NOTE: THE NOMINAL ORIENTATION ILLUSTRATED IS BASED ON NOMINAL DIMENSIONS OF BOTH THE CLOSURE AND THE RECOMMENDED NECK FINISH FOR EXACT ORIENTATION EACH BOTTLE SHOULD BE EVALUATED ON A CASE BY CASE BASIS.

DRAWING TYPE: CUSTOMER

DIMENSIONS ENCLOSED IN () INDICATE REFERENCE DIMENSIONS AND NO TOLERANCE LIMITS ARE ESTABLISHED

TOLERANCES UNLESS OTHERWISE SPECIFIED

DIMENSION (inches)	TOLERANCE	DIMENSION (mm)	TOLERANCE
0-0.787	±0.006	0-20	±0.152
0.788-1.181	±0.008	21-30	±0.203
1.182-2.756	±0.012	31-70	±0.305
2.757-3.937	±0.016	71-100	±0.406
3.938-5.096	±0.020	101-150	±0.508
5.097-7.874	±0.024	151-200	±0.610
7.875-9.843	±0.032	201-250	±0.813

ANGULAR TOLERANCE ± 2 °

THE CLOSURE DIMENSIONS DEPICTED ARE THOSE WHICH HAVE GENERALLY BEEN FOUND TO BE FUNCTIONAL BASED ON INDUSTRY EXPERIENCE BECAUSE OF VARIABILITY IN GLASS AND PLASTIC CONTAINER FINISHES, EACH CLOSURE/FINISH SYSTEM SHOULD BE INDIVIDUALLY EVALUATED AND TESTED TO ENSURE IT MEETS APPLICABLE PERFORMANCE CRITERIA. SEE QUALITY ASSURANCE SPECIFICATIONS FOR ADDITIONAL INFORMATION.

THE CARY COMPANY TECHNOLOGIES RESERVES THE RIGHT TO REVISE ANY OR ALL SPECIFICATIONS AND REQUIREMENTS.

P: 630-629-6600 | F: 630-629-3690
1185 W. Fullerton Ave Addison, IL 60101
www.thecarycompany.com

The
CARY COMPANY
Est. 1895



DISTRIBUTION CODE
D

DRAWING NAME
**53-400 CRC Assm
RECOMMENDED NECK FINISH**
DRAWING NUMBER
CQA - 10095

DRAWN BY: BDG
ENG APPR: BDG
QA APPR: REL

DATE: 3/1/2016
MATERIAL:
MODEL NUMBER:
SCALE: 1:2
SHEET SIZE: 8.5" X 11"
SHEET: 3 of 3
REV. N/P: 02 AC