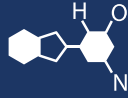


IF YOU...



MIX IT. FILL IT. PACK IT. SHIP IT.

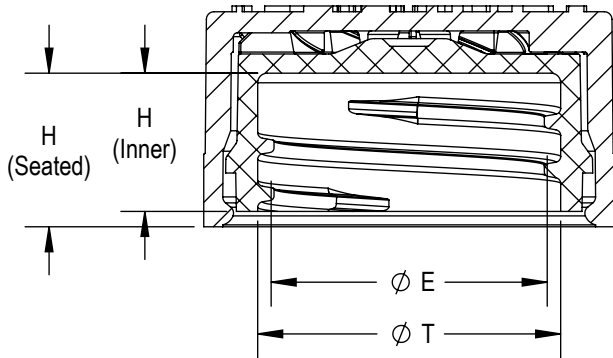
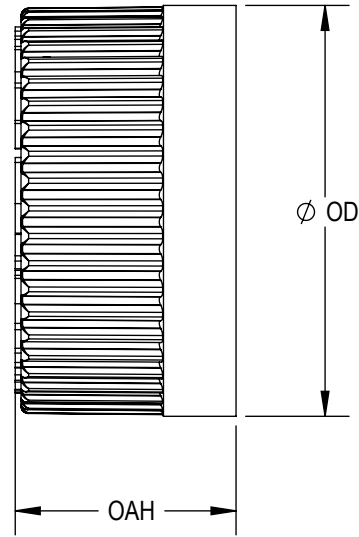
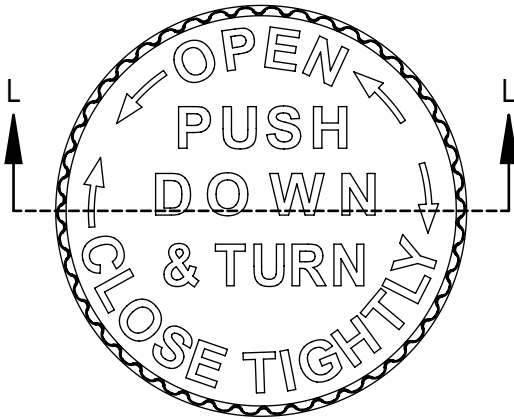
WE HAVE A **PRODUCT** FOR YOU

Part #: 68BC2K



The
CARYCOMPANY
Est. 1895

1195 W. Fullerton Ave. | Addison, IL 60101 | T: 630.629.6600 | F: 630.629.3690 |



SECTION L-L

8 THREADS PER INCH, 0.125 PITCH

REFERENCE	TOLERANCE	DIMENSION	UNITS
E	±0.006 [0.15]	0.704 [17.88]	in [mm]
T	±0.006 [0.15]	0.786 [19.96]	in [mm]
H [Seated]	REFERENCE	0.400 [10.16]	in [mm]
H [Inner]	±0.008 [0.25]	0.360 [9.14]	in [mm]
OD	±0.010 [0.25]	1.070 [27.18]	in [mm]
OAH	±0.010 [0.25]	0.575 [14.61]	in [mm]
PART WEIGHT	± 0.50	3.47	g

STATIC TORQUE RECOMMENDATION
8-12in-lbs
 THIS REQUIREMENT MAY VARY DEPENDING UPON BOTTLE MATERIAL, NECK FINISH, AND CAPPING EQUIPMENT

DRAWING TYPE : **CUSTOMER**

REPLACES DRAWINGS:
 PDT-20

DIMENSIONS ENCLOSED IN () INDICATE REFERENCE DIMENSIONS AND NO TOLERANCE LIMITS ARE ESTABLISHED

TOLERANCES UNLESS OTHERWISE SPECIFIED

DIMENSION (inches)	TOLERANCE	DIMENSION (mm)	TOLERANCE
0-0.787	±0.006	0-20	±0.152
0.788-1.181	±0.008	21-30	±0.203
1.182-2.756	±0.012	31-70	±0.305
2.757-3.937	±0.016	71-100	±0.406
3.938-5.096	±0.020	101-150	±0.508
5.097-7.874	±0.024	151-200	±0.610
7.875-9.843	±0.032	201-250	±0.813

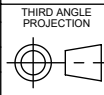
THE CLOSURE DIMENSIONS DEPICTED ARE THOSE WHICH HAVE GENERALLY BEEN FOUND TO BE FUNCTIONAL BASED ON INDUSTRY EXPERIENCE BECAUSE OF VARIABILITY IN GLASS AND PLASTIC CONTAINER FINISHES, EACH CLOSURE/FINISH SYSTEM SHOULD BE INDIVIDUALLY EVALUATED AND TESTED TO ENSURE IT MEETS APPLICABLE PERFORMANCE CRITERIA. SEE QUALITY ASSURANCE SPECIFICATIONS FOR ADDITIONAL INFORMATION.

THE CARY COMPANY RESERVES THE RIGHT TO REVISE ANY OR ALL SPECIFICATIONS AND REQUIREMENTS.

ANGULAR TOLERANCE ± 2°
 PROPRIETARY AND CONFIDENTIAL

THIS DRAWING IS PROTECTED BY COPYRIGHT AND CONTAINS INFORMATION PROPRIETARY TO THE CARY COMPANY. ANY REPRODUCTION, DISCLOSURE, OR USE OF ITS CONTENTS OR ANY PART THEREOF IS EXPRESSLY PROHIBITED EXCEPT AS OTHERWISE MAY AGREE IN WRITING

The **CARY COMPANY**
 Est. 1895



THIRD ANGLE PROJECTION



DISTRIBUTION CODE
D

DRAWING NAME
20-400 CRC PDT ASSM
 PDT Emboss

DRAWING NUMBER
CQA - 11114

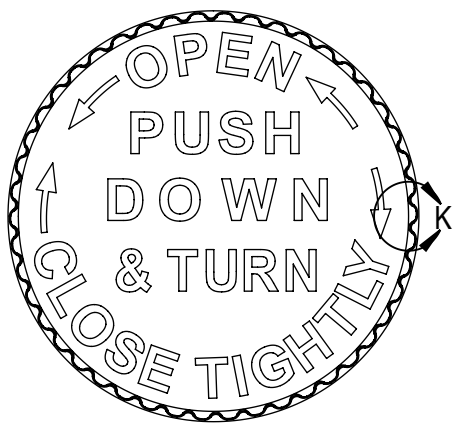
MATERIAL
POLYPROPYLENE

MODEL NUMBER:
PM 11010 20-400 CRC ASSM

DRAWN BY:	BDG	2/19/2018
ENG APPR.	BDG	10/15/2019
QA APPR.	REL	11/19/2019

SCALE	SHEET SIZE	SHEET	REV/ NP
2:1	8.5" X 11"	1 of 3	00.AB

DATE	REV	N/P	DESCRIPTION	ENG	DRWN
03/16/18	00	AA	DRAWING RELEASE	BDG	BDG
09/20/19	00	AB	REDUCED T & E TOLERANCE TO 0.006	BDG	BDG



DETAIL K
(54) EQUISPACED RIBS
SCALE 4 : 1

THE CLOSURE DIMENSIONS DEPICTED ARE THOSE WHICH HAVE GENERALLY BEEN FOUND TO BE FUNCTIONAL BASED ON INDUSTRY EXPERIENCE BECAUSE OF VARIABILITY IN GLASS AND PLASTIC CONTAINER FINISHES. EACH CLOSURE/FINISH SYSTEM SHOULD BE INDIVIDUALLY EVALUATED AND TESTED TO ENSURE IT MEETS APPLICABLE PERFORMANCE CRITERIA. SEE QUALITY ASSURANCE SPECIFICATIONS FOR ADDITIONAL INFORMATION.

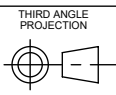
THE CARY COMPANY RESERVES THE RIGHT TO REVISE ANY OR ALL SPECIFICATIONS AND REQUIREMENTS.

DRAWING TYPE : CUSTOMER

REFERENCES: DIMENSIONS ENCLOSED IN () INDICATE REFERENCE DIMENSIONS AND NO TOLERANCE LIMITS ARE ESTABLISHED

TOLERANCES UNLESS OTHERWISE SPECIFIED			
DIMENSION (inches)	TOLERANCE	DIMENSION (mm)	TOLERANCE
0-0.787	±0.006	0-20	±0.152
0.788-1.181	±0.008	21-30	±0.203
1.182-2.756	±0.012	31-70	±0.305
2.757-3.937	±0.016	71-100	±0.406
3.938-5.096	±0.020	101-150	±0.508
5.097-7.874	±0.024	151-200	±0.610
7.875-9.843	±0.032	201-250	±0.813
ANGULAR TOLERANCE ± 2°			
PROPRIETARY AND CONFIDENTIAL			

THIS DRAWING IS PROTECTED BY COPYRIGHT AND CONTAINS INFORMATION PROPRIETARY TO THE CARY COMPANY. ANY REPRODUCTION, DISCLOSURE, OR USE OF ITS CONTENTS OR ANY PART THEREOF IS EXPRESSLY PROHIBITED EXCEPT AS OTHERWISE MAY AGREE IN WRITING



DISTRIBUTION CODE
D

DRAWING NAME
20-400 CRC PDT ASSM
PDT Emboss

DRAWING NUMBER
CQA - 11114

DRAWN BY. BDG 2/19/2018

MATERIAL
POLYPROPYLENE

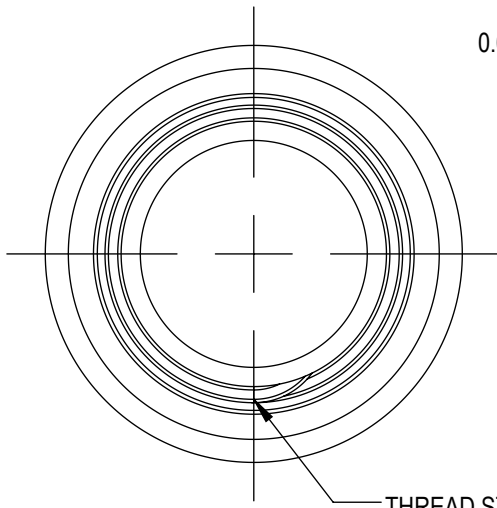
ENG APPR. BDG 10/15/2019

MODEL NUMBER:
PM 11010 20-400 CRC ASSM

QA APPR. REL 11/19/2019

SCALE	SHEET SIZE	SHEET	REV.NP
2:1	8.5 X 11	2 of 3	00.AB

0.050 MINIMUM FLAT FOR INDUCTION SEALING



.084
[2.13]

S

45°

PITCH

R.010
[0.25]

10°

DETAIL THREAD
SCALE 4 : 1

THREAD START

Ø B
(Optional)

Ø T

Ø E

Ø I

THREAD

H

H1

SECTION H-H
SCALE 2 : 1

REFERENCE	TOLERANCE	UNITS	DIMENSION
E	± 0.008[0.20]	in [mm]	0.691 [17.55]
T	± 0.008[0.20]	in [mm]	0.775 [19.69]
I	MINIMUM	in [mm]	0.404 [10.26]
S	±0.015[0.38]	in [mm]	0.037[0.94]
H	MINIMUM	in [mm]	0.370 [9.40]
H1	MINIMUM	in [mm]	0.490 [12.45]
B	MAXIMUM	in [mm]	0.835 [21.21]
TPI			8
PITCH		in [mm]	0.125[3.18]

NOTE: THE NOMINAL ORIENTATION ILLUSTRATED IS BASED ON NOMINAL DIMENSIONS OF BOTH THE CLOSURE AND THE RECOMMENDED NECK FINISH. FOR EXACT ORIENTATION EACH BOTTLE SHOULD BE EVALUATED ON A CASE BY CASE BASIS.

DRAWING TYPE : CUSTOMER

DIMENSIONS ENCLOSED IN () INDICATE REFERENCE DIMENSIONS AND NO TOLERANCE LIMITS ARE ESTABLISHED

TOLERANCES UNLESS OTHERWISE SPECIFIED

DIMENSION (inches)	TOLERANCE	DIMENSION (mm)	TOLERANCE
0-0.787	±0.006	0-20	±0.152
0.788-1.181	±0.008	21-30	±0.203
1.182-2.756	±0.012	31-70	±0.305
2.757-3.937	±0.016	71-100	±0.406
3.938-5.096	±0.020	101-150	±0.508
5.097-7.874	±0.024	151-200	±0.610
7.875-9.843	±0.032	201-250	±0.813

ANGULAR TOLERANCE ± 2°

PROPRIETARY AND CONFIDENTIAL

THIS DRAWING IS PROTECTED BY COPYRIGHT AND CONTAINS INFORMATION PROPRIETARY TO THE CARY COMPANY. ANY REPRODUCTION, DISCLOSURE, OR USE OF ITS CONTENTS OR ANY PART THEREOF IS EXPRESSLY PROHIBITED EXCEPT AS OTHERWISE MAY AGREE IN WRITING

The
CARY COMPANY
Est. 1895



SOLIDWORKS

DISTRIBUTION CODE

D

DRAWING NAME

20-400 CRC PDT ASSM
Recommended Neck Finish

DRAWING NUMBER

CQA - 11114

MATERIAL

DRAWN BY:

BDG

2/19/2018

ENG APPR.:

BDG

10/15/2019

QA APPR.:

REL

11/19/2019

MODEL NUMBER:

SCALE

1:1

SHEET SIZE

8.5 X 11

SHEET

3 of 3

REV/N/P

00.AB

THE CLOSURE DIMENSIONS DEPICTED ARE THOSE WHICH HAVE GENERALLY BEEN FOUND TO BE FUNCTIONAL BASED ON INDUSTRY EXPERIENCE BECAUSE OF VARIABILITY IN GLASS AND PLASTIC CONTAINER FINISHES, EACH CLOSURE/FINISH SYSTEM SHOULD BE INDIVIDUALLY EVALUATED AND TESTED TO ENSURE IT MEETS APPLICABLE PERFORMANCE CRITERIA. SEE QUALITY ASSURANCE SPECIFICATIONS FOR ADDITIONAL INFORMATION.

THE CARY COMPANY RESERVES THE RIGHT TO REVISE ANY OR ALL SPECIFICATIONS AND REQUIREMENTS.