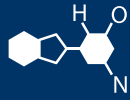


IF YOU...



MIX IT. FILL IT. PACK IT. SHIP IT.

WE HAVE A PRODUCT FOR YOU

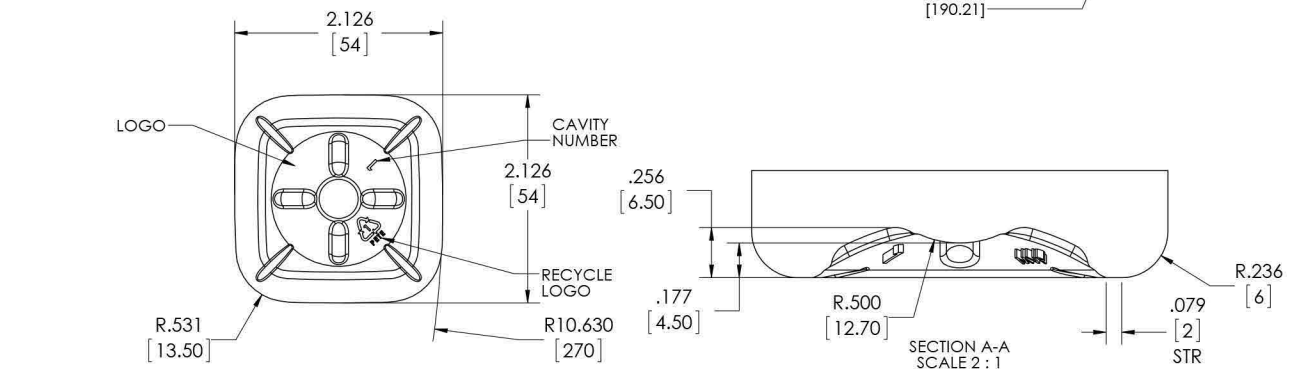
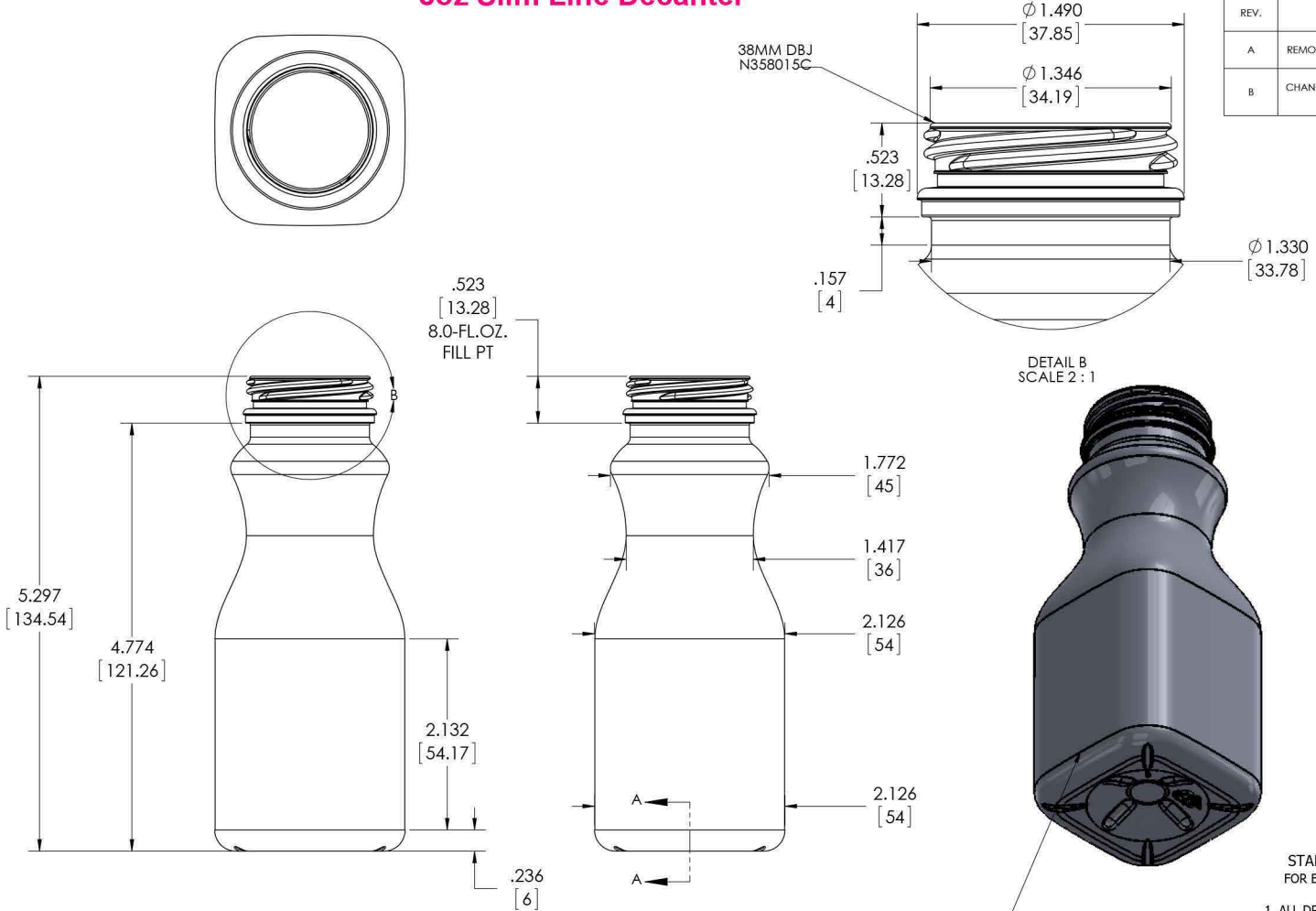
Part # 68W09D

8 oz. Clear PET Plastic Tamper Evident Juice
Bottle, 38mm 358DBJ



8oz Slim Line Decanter

REVISIONS			
REV.	DESCRIPTION	DATE	APPROVED
A	REMOVED TAPER AND SHORTENED TO MEET VOLUME	5/19/2015	DCC
B	CHANGED TO 18.75-GRAM PREFORM AND ADJUSTED VOLUME DATA	9/9/2015	DCC



STANDARD MANUFACTURING SPECIFICATIONS STATEMENT
 FOR BOTTLES 72 HOURS AFTER MANUFACTURE WHEN STORED AT ROOM TEMPERATURE AND 50% R.H.

- ALL DRAWINGS ARE DUAL DIMENSIONED (INCHES AND MILLIMETERS)
- THE FOLLOWING TOLERANCES APPLY FOR OVERALL HEIGHT, MAJOR DIAMETER, AND LABEL PANEL(EXCEPT WHERE NOTED)
 HEIGHT..... ±0.5% OF STATED DIMENSIONS
 DIAMETERS ±1.0% OF STATED DIMENSIONS
- THE FOLLOWING CAPACITY TOLERANCES APPLY (EXCEPT WHERE NOTED) FOR COLD FILLED CONTAINERS **NOMINAL CAPACITY**
 <=300mlAVERAGE +6ml - 0.0
 >300ml TO <=1000ml.....AVERAGE +1.6% - 0.0
 >1000ml TO <2000ml.....AVERAGE +1.2% - 0.0
 >=2000ml.....AVERAGE +1.0% - 0.0
- DIMENSIONS AND WEIGHT ARE SUBJECT TO CHANGE WITH FINAL VOLUMETRIC CALCULATIONS.
- FINAL VOLUME TOLERANCE TO BE DEFINED BY MFG. DATA.

FILLPOINT VOLUME= 8.0-FL.OZ. / 237-ML		MATERIAL-PET	
OVERFLOW VOLUME = 8.36-FL.OZ. / 247.2-ML		FINISH 38MM DBJ N358015C	
PROPOSED PREFORM 1320-12-PD-B-00 18.75-GRAM		REF. 3 D MODEL FILE 2204-15-BD-C-02	
DRAWN	NAME	DATE	8 OZ SL CARAFE 18.75G 38 MM DBJ
CHECKED	D.CONNOR	4/29/2015	
ENG APPR.			
MFG APPR.			
QA.			
COMMENTS:			SIZE C REV B SCALE: 1:1 SHEET 1 OF 1