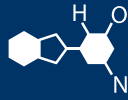


# IF YOU...



MIX IT. FILL IT. PACK IT. SHIP IT.

# WE HAVE A **PRODUCT** FOR YOU

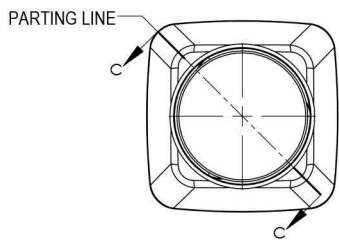
Part # 68W10W

---

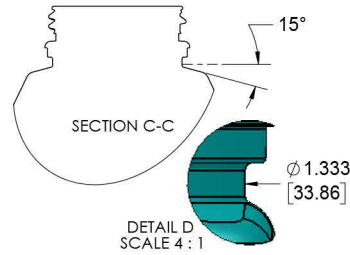
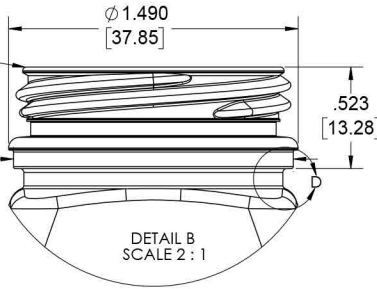
10 oz. Clear PET Plastic Tamper Evident WH  
Square Bottle, 38mm 358DBJ

---





38MM DBJ  
REF. PORTOLA  
N358015C

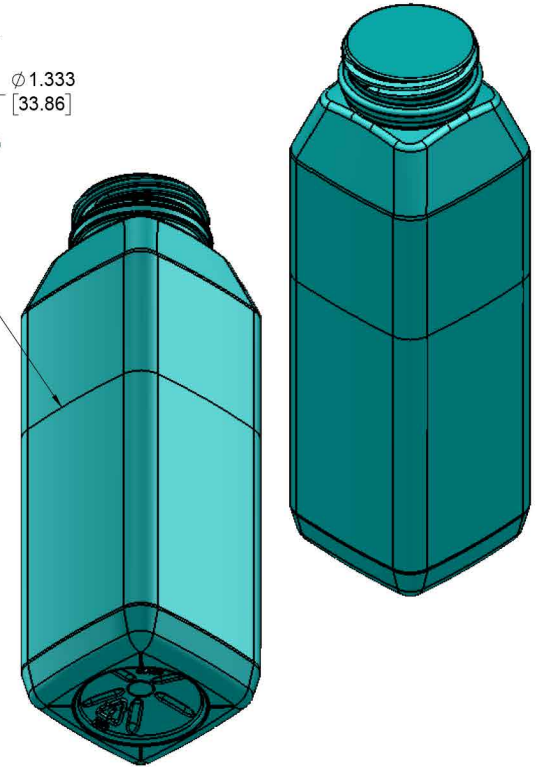
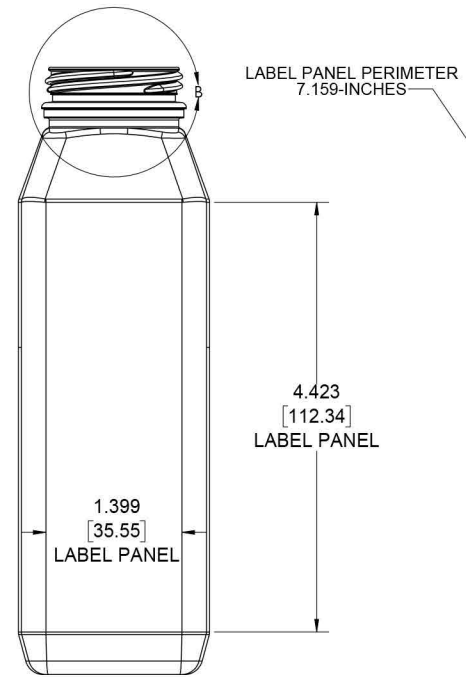
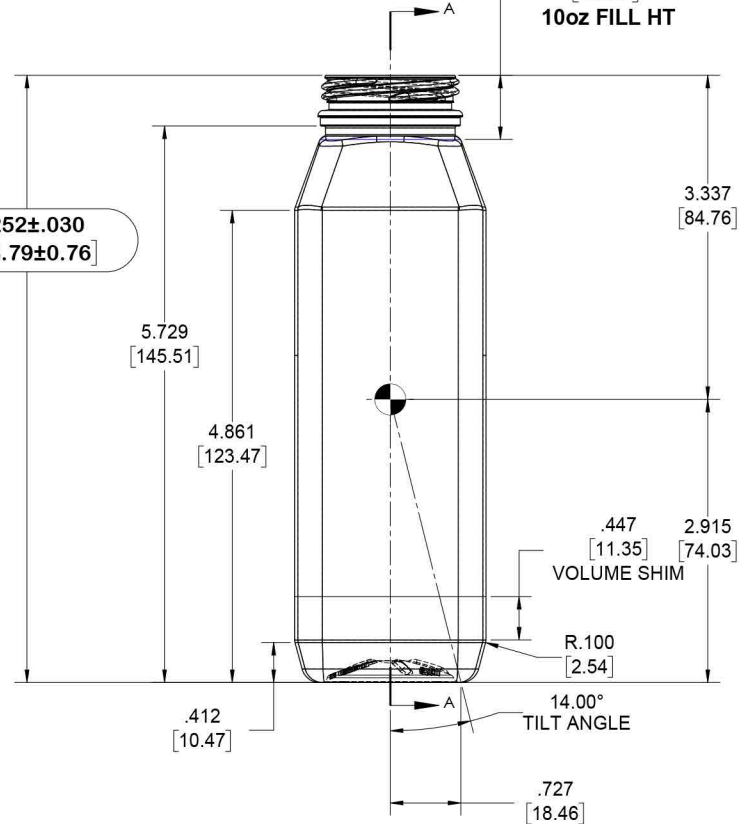


| REVISIONS |                                  |          |          |
|-----------|----------------------------------|----------|----------|
| REV.      | DESCRIPTION                      | DATE     | APPROVED |
| A         | lowered fill ht and added volume | 1/5/2016 | K.D.L.   |

APPROVED FOR MFG 1-13-16

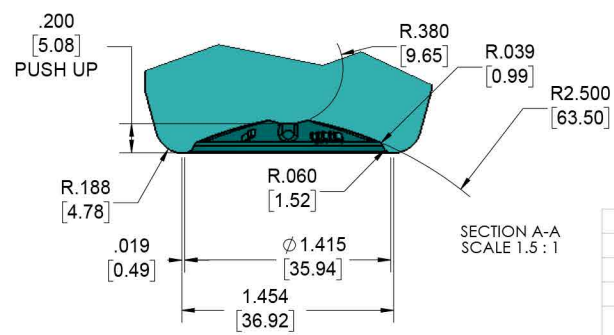
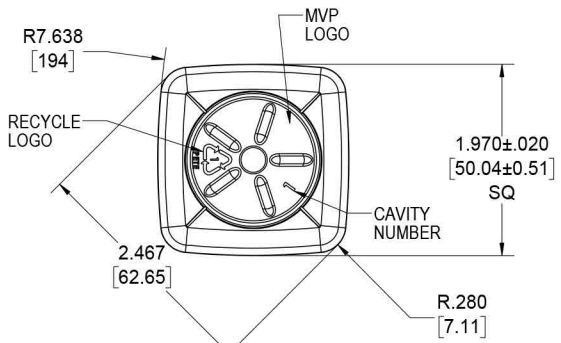
.661  
[16.80]  
10oz FILL HT

6.252±.030  
[158.79±0.76]



STANDARD MANUFACTURING SPECIFICATIONS STATEMENT  
FOR BOTTLES 72 HOURS AFTER MANUFACTURE WHEN STORED AT ROOM TEMPERATURE AND 50% R.H.

- ALL DRAWINGS ARE DUAL DIMENSIONED (INCHES AND MILLIMETERS)
- THE FOLLOWING TOLERANCES APPLY FOR OVERALL HEIGHT, MAJOR DIAMETER, AND LABEL PANEL (EXCEPT WHERE NOTED)  
HEIGHT..... ±0.5% OF STATED DIMENSIONS  
DIAMETERS..... ±1.0% OF STATED DIMENSIONS
- THE FOLLOWING CAPACITY TOLERANCES APPLY (EXCEPT WHERE NOTED) FOR COLD FILLED CONTAINERS **NOMINAL** CAPACITY  
<=300ml.....AVERAGE +6ml - 0.0  
>300ml TO <=1000ml.....AVERAGE +1.6% - 0.0  
>1000ml TO <2000ml.....AVERAGE +1.2% - 0.0  
>=2000ml.....AVERAGE +1.0% - 0.0
- DIMENSIONS AND WEIGHT ARE SUBJECT TO CHANGE WITH FINAL VOLUMETRIC CALCULATIONS.
- FINAL VOLUME TOLERANCE TO BE DEFINED BY MFG. DATA.



**APPROVED**

|   |             |                    |   |
|---|-------------|--------------------|---|
| FILLPOINT VOLUME= 10.2-FL.OZ. / 303.6-ML  |             | MATERIAL PET       |   |
| OVERFLOW VOLUME= 10.69-FL.OZ. / 316.14-ML |             | FINISH PORTOLA DBJ |   |
| PROPOSED PREFORM 28g DBJ 2221-15-PD-C-01  |             |                    |   |
| REF. 3 D MODEL FILE 2374-16-BD-C-01       |             |                    |   |
| DRAWN                                     | NAME        | DATE               | <p><b>10 oz WH SQ.</b><br/><b>28g DBJ</b></p> <p>SIZE DWG. NO. <b>A</b></p> <p>SCALE: 1:1</p> |
| CHECKED                                   | K.D. LUFKIN | 12-29-15           |   |
| ENG APPR.                                 |             |                    |   |
| MFG APPR.                                 |             |                    |   |
| Q.A.                                      |             |                    |   |
| COMMENTS:                                 |             |                    | REV <b>A</b>  |
| PROJECT # 14-158                          |             |                    | SHEET 1 OF 3  |