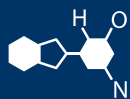


IF YOU...



MIX IT. FILL IT. PACK IT. SHIP IT.

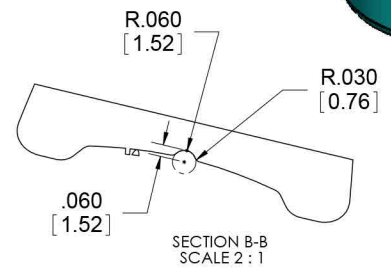
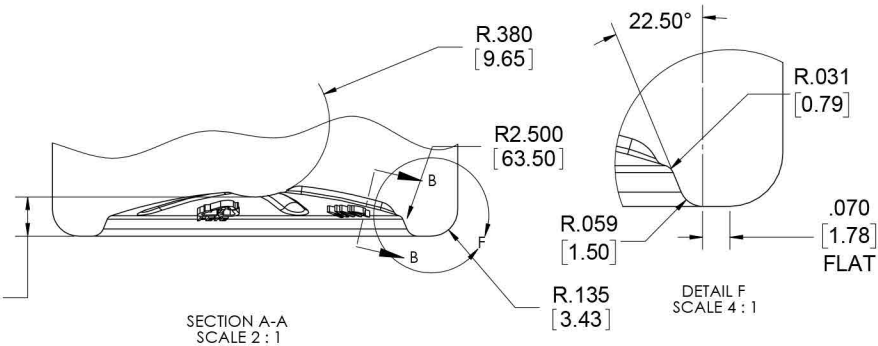
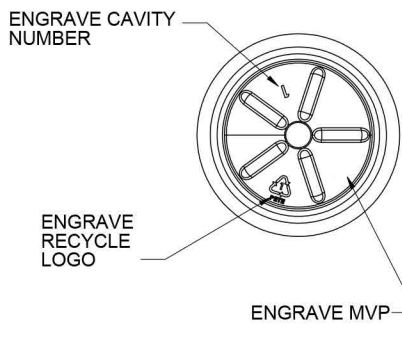
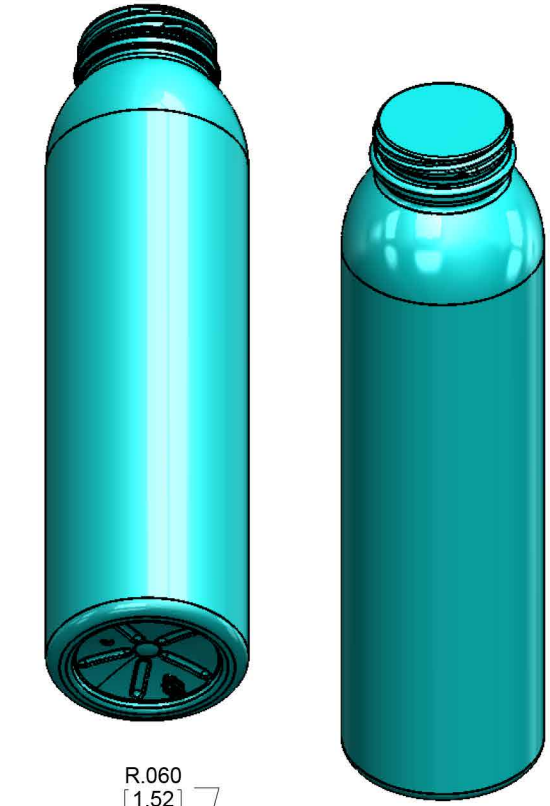
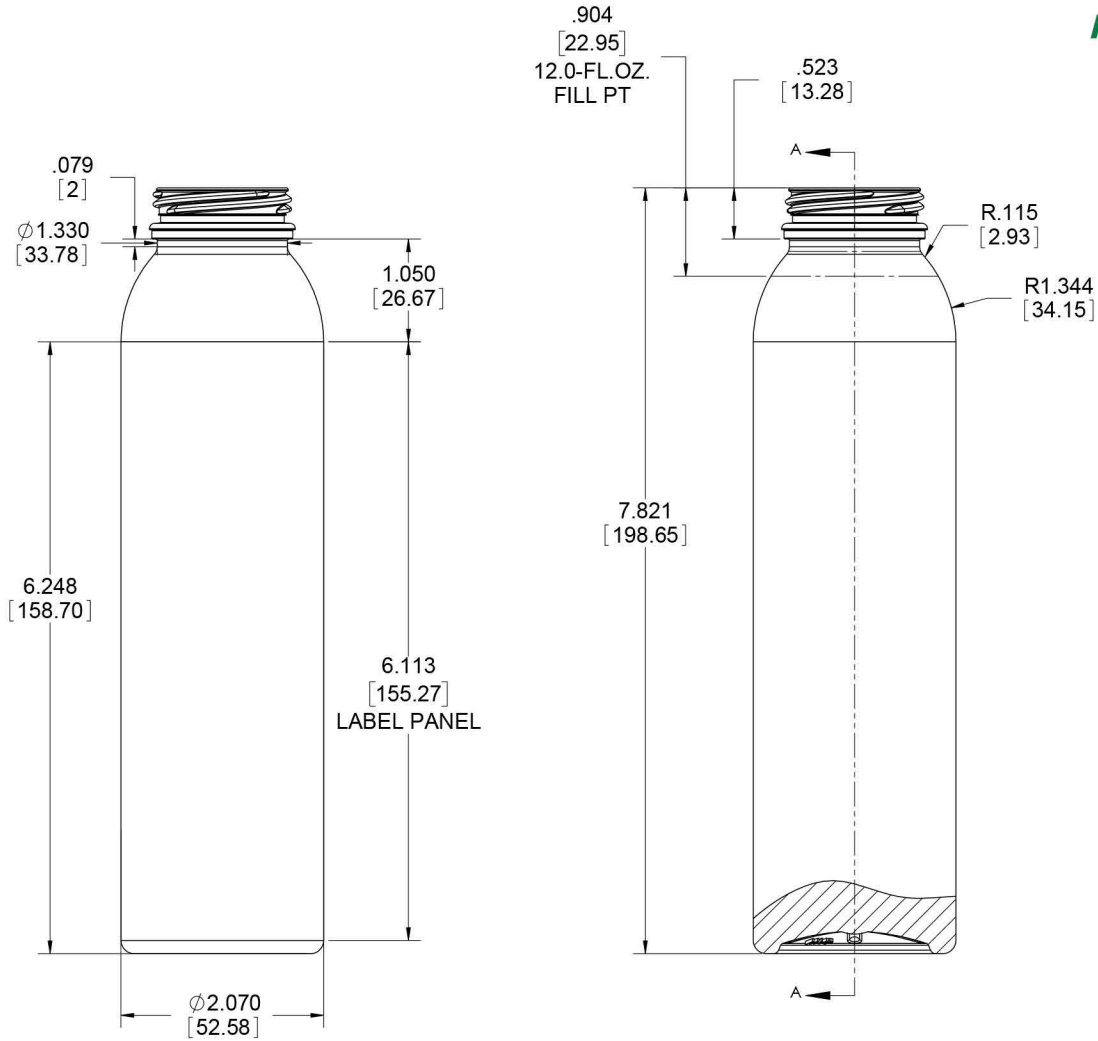
WE HAVE A **PRODUCT** FOR YOU

Part # 68W10E

10 oz. Clear PET Plastic Energy Shot Bottle,
38mm 358DBJ



RELEASED FOR MANUFACTURE 12/19/2013



FILLPOINT VOLUME= 12.0-FL.OZ. / 354.9-ML		MATERIAL	PET
OVERFLOW VOLUME = 12.7-FL.OZ. / 374.5-ML		FINISH	38MM DBJ
PROPOSED PREFORM 2221-15-PD-B-01 28-GRAM		N358015C	
REF. 3 D MODEL FILE 2426-16-BD-C-00			
DRAWN	NAME	DATE	12 OZ ENERGY 28G DBJ
CHECKED	D.CONNOR	2/19/2016	
ENG APPR.			
MFG APPR.			
Q.A.			
COMMENTS:	SIZE	DWG. NO.	REV
PROJECT # PR09-141	C		-
	SCALE: 1:1		SHEET 1 OF 1