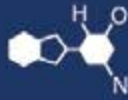


IF YOU...



MIX IT. FILL IT. PACK IT. SHIP IT.

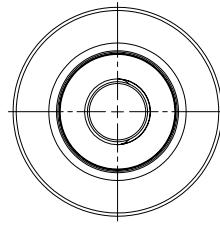
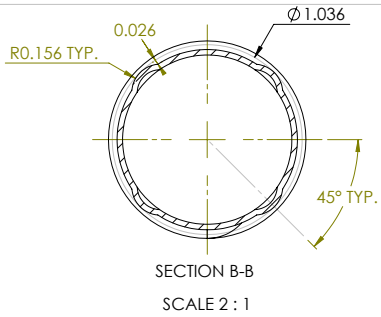
WE HAVE A **PRODUCT** FOR YOU

Part #: 68W134

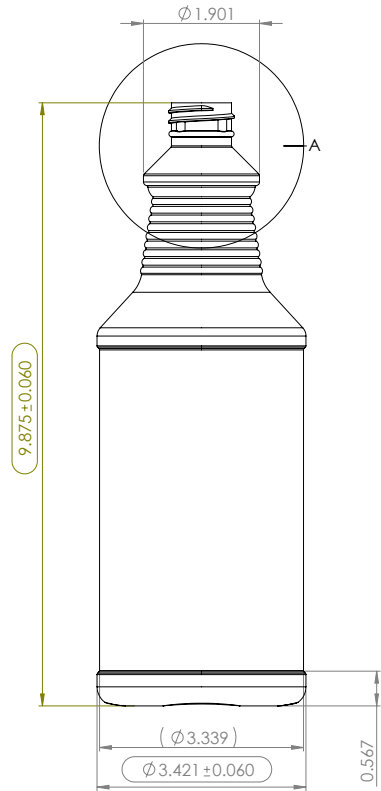
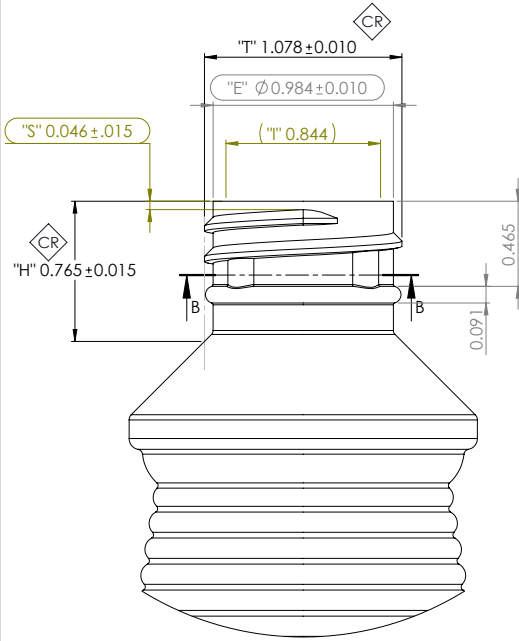


The
CARYCOMPANY
Est. 1895

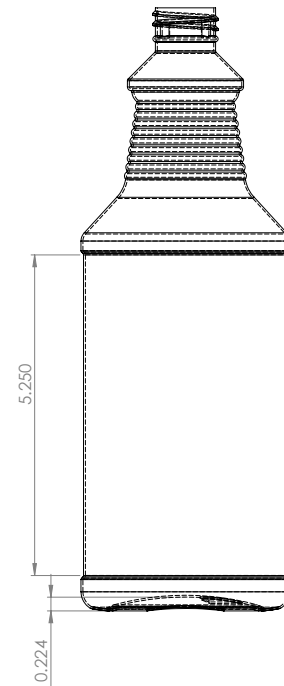
1195 W. Fullerton Ave. | Addison, IL 60101 | T: 630.629.6600 | F: 630.629.3690 |



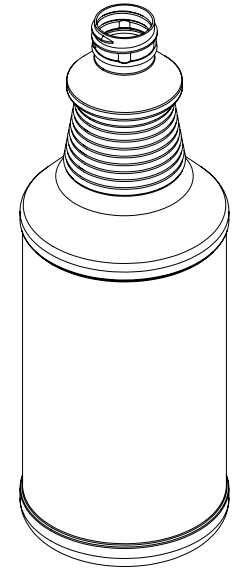
DETAIL A: NECK FINISH



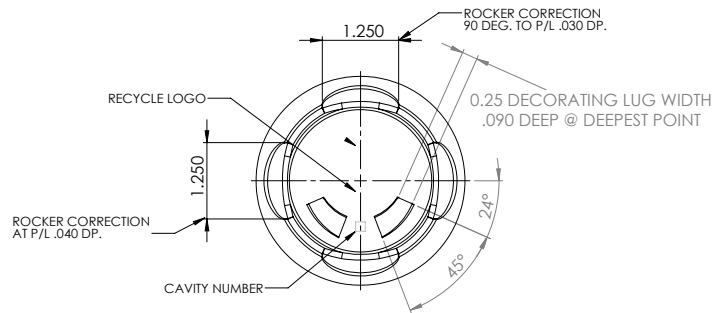
M28-410 FINISH
SPECIAL "H"
6 T.P.I.
1.5 FULL THREAD TURNS



LABEL PANEL
MAX .050' TIR



1. DIMENSIONS OR NOTES MARKED WITH A DENOTE CRITICAL CHARACTERISTICS TO BE MONITORED DURING PRODUCTION.
2. DIMENSIONS OR NOTES MARKED WITH A DENOTE CHARACTERISTICS TO BE MONITORED DURING PRODUCTION QUALIFICATION ONLY.
3. NECK DIAMETER DIMENSIONS MARKED WITH OR SHALL BE DETERMINED BY AVERAGING THE MEASUREMENTS AT PARTING LINE AND 90 DEGREES FROM PARTING LINE.
4. REFERENCE ONLY DIMENSIONS CONTAINED IN ().
5. MINIMUM CONTAINER WALL THICKNESS .012".
6. CONTAINER TOP LOAD REQUIREMENT TO BE 45 LBS. MINIMUM AT 1/2" DEFLECTION.
7. MATERIAL HDPE
8. TARGET WEIGHT 45.0±3 GRAMS.
9. OVERFLOW CAPACITY 33.70 ± 0.5 FL. OZ.
10. MEASUREMENTS TAKEN 24 HOURS AFTER MOLDING.



| | | | | The CARY COMPANY Est. 1905 | |
|----------------|--|------------|---------|-------------------------------|-------------------------------|
| C | ADDED DECORATING LUG WIDTH & DEPTH NOTE. UPDATED DIAMETER MEASUREMENT REFERENCE IN NOTES SECTION | | 7/25/17 | | |
| B | ADDED .050" MAX TIR (TOTAL INDICATOR RUNOUT) FOR LABEL PANEL | | 2/28/17 | | |
| A | TOP LOAD DEFLECTION WAS 1/4", NOW 1/2". TOP LOAD REQ. WAS SOLB, NOW 45 (REF. DIVERSEY SPEC) | | 5/27/13 | TITLE: 32oz CARAFE | |
| PROJECT NUMBER | 1595-12-14 | BY | DATE | DESCRIPTION | PRODUCT DRAWING |
| DRAWN BY | DATE | CHECKED BY | DATE | DRWG. NO. | 68W134 |
| SJ | 11/7/12 | | | SIZE C | SCALE 2:3 SHEET 1 OF 1 REV. C |