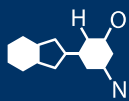


IF YOU...



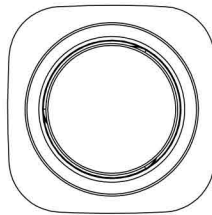
MIX IT. FILL IT. PACK IT. SHIP IT.

WE HAVE A **PRODUCT** FOR YOU

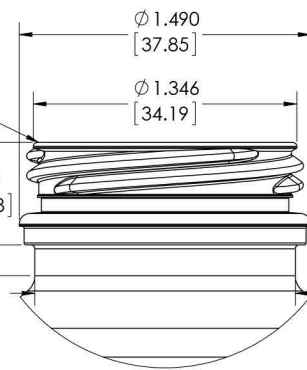
Part # 68W13D

12 oz. Clear PET Plastic Tamper Evident Juice
Bottle, 38mm 358DBJ





38MM DBJ
N358015C



DETAIL B
SCALE 2 : 1

REVISIONS			
REV.	DESCRIPTION	DATE	APPROVED
A	REMOVED TAPER FROM BODY AND GREW BODY TALLER TO MEET VOLUME.	5/19/2015	DCC
B	ADJUSTED WIDTH AND HEIGHT TO BALANCE SYMMETRY	5/19/2015	DCC
C	ADJUSTED WIDTH TO 2.126 AND GREW HEIGHT OF RECOUP VOLUME C1	5/28/2015	DCC
D	CHANGED TO 28-GRAM PREFORM AND ADJUSTED BOTTLE HEIGHT WAS 7.004 NOW 7.130-INCHES	9/9/2015	DCC

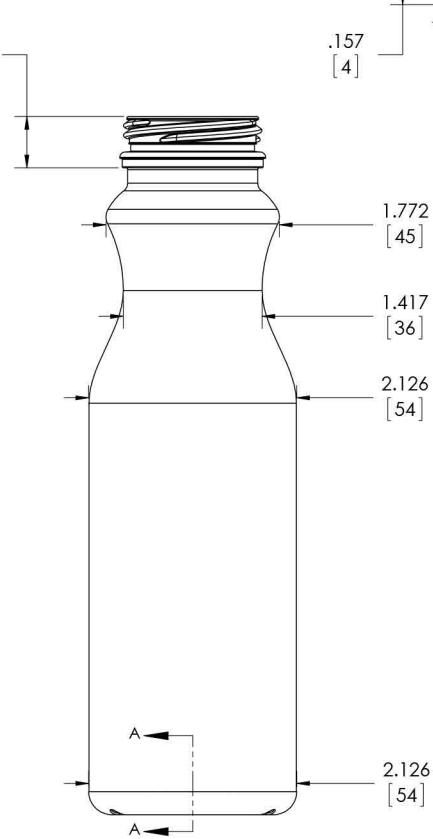
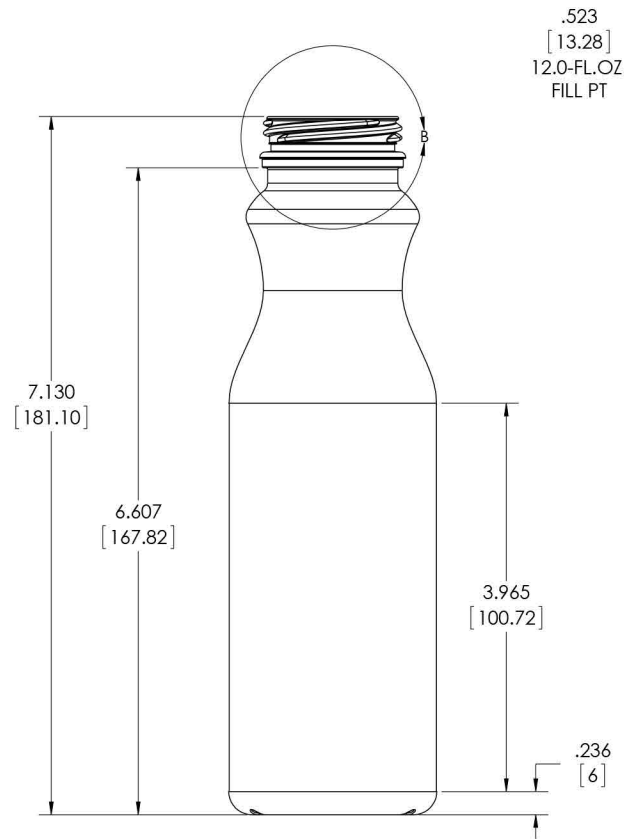


The
CARY COMPANY
Est. 1895

STANDARD MANUFACTURING SPECIFICATIONS STATEMENT
FOR BOTTLES 72 HOURS AFTER MANUFACTURE WHEN STORED AT ROOM
TEMPERATURE AND 50% R.H.

- ALL DRAWINGS ARE DUAL DIMENSIONED (INCHES AND MILLIMETERS)
- THE FOLLOWING TOLERANCES APPLY FOR OVERALL HEIGHT, MAJOR DIAMETER, AND LABEL PANEL(EXCEPT WHERE NOTED)
HEIGHT..... ±0.5% OF STATED DIMENSIONS
DIAMETERS ±1.0% OF STATED DIMENSIONS
- THE FOLLOWING CAPACITY TOLERANCES APPLY
(EXCEPT WHERE NOTED) FOR COLD FILLED CONTAINERS **NOMINAL CAPACITY**
≤300mlAVERAGE +6ml - 0.0
>300ml TO ≤1000ml.....AVERAGE +1.6% - 0.0
>1000ml TO <2000ml.....AVERAGE +1.2% - 0.0
>=2000ml.....AVERAGE +1.0% - 0.0
- DIMENSIONS AND WEIGHT ARE SUBJECT TO CHANGE WITH FINAL VOLUMETRIC CALCULATIONS.
- FINAL VOLUME TOLERANCE TO BE DEFINED BY MFG. DATA.

FILLPOINT VOLUME= 12.0-FL.OZ. / 355-ML		MATERIAL-PET	
OVERFLOW VOLUME = 12.4-FL.OZ. / 366.8-ML		FINISH	
PROPOSED PREFORM 2221-15-PD-B-01 28.0-GRAM		38MM DBJ	
REF. 3 D MODEL FILE 2212-15-BD-C-04		N358015C	
DRAWN D.CONNOR 5/4/2015		12-OUNCE SL CARAFE	
CHECKED			
ENG APPR.			
MFG APPR.			
G.A.		REV D	
COMMENTS:		SIZE DWG. NO.	
PROJECT #PR15-147		SCALE: 1:1	
		SHEET 1 OF 1	



LABEL PERIMETER
7.486
[190.21]

