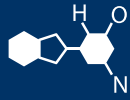


IF YOU...



MIX IT. FILL IT. PACK IT. SHIP IT.

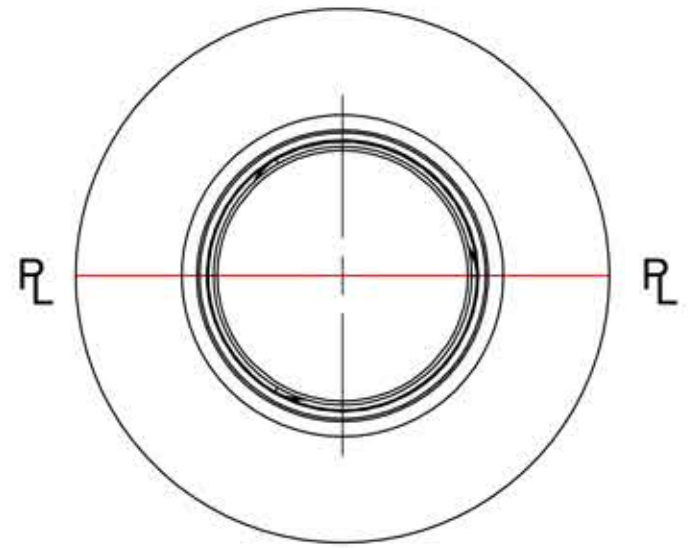
WE HAVE A **PRODUCT** FOR YOU

Part # 68W16B

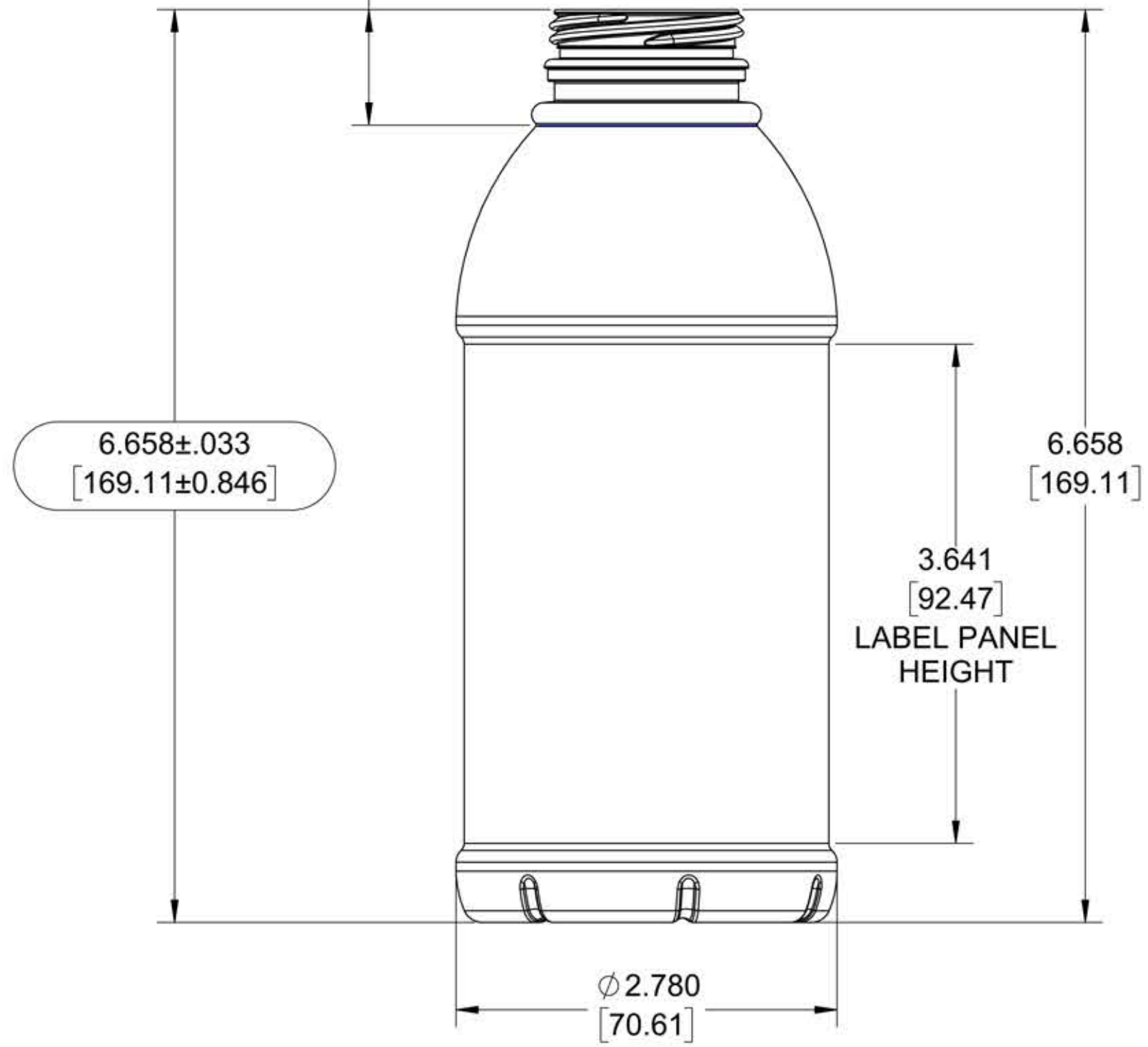
16 oz. Clear PET Plastic Tamper Evident Bullet
Round Bottle, 38mm 358DBJ



REVISIONS			
REV.	DESCRIPTION	DATE	APPROVED
A	PREFORM AND VOLUMETRIC NOTES UPDATED	6/19/2014	DWS
B	UPDATED SPECIFIED PREFORM	6/9/2016	DCC

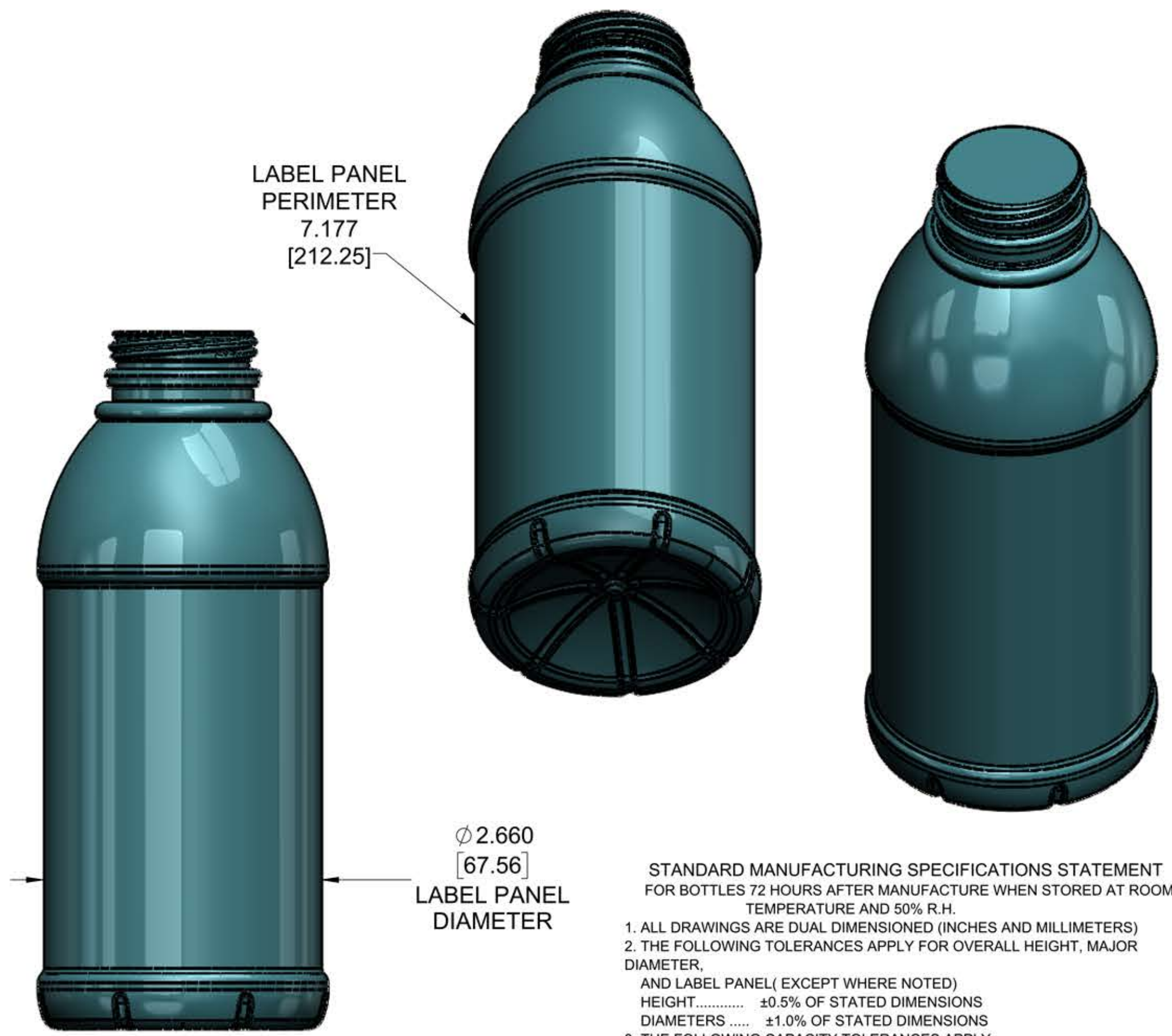


.843
[21.41]
EST FILL PT



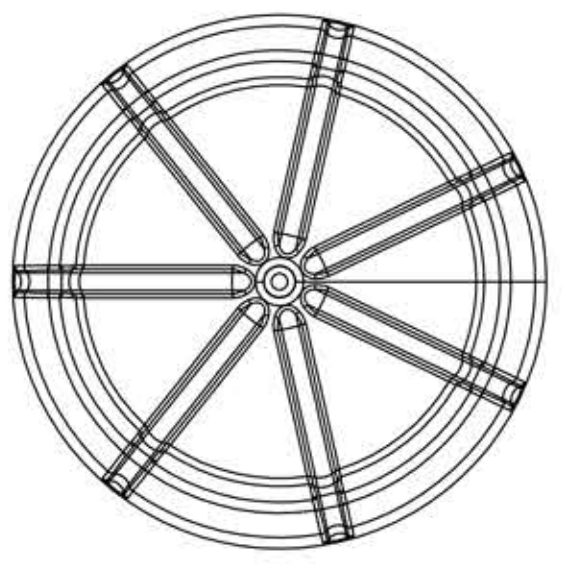
LABEL PANEL PERIMETER
7.177
[212.25]

Ø 2.660
[67.56]
LABEL PANEL DIAMETER



STANDARD MANUFACTURING SPECIFICATIONS STATEMENT FOR BOTTLES 72 HOURS AFTER MANUFACTURE WHEN STORED AT ROOM TEMPERATURE AND 50% R.H.

- ALL DRAWINGS ARE DUAL DIMENSIONED (INCHES AND MILLIMETERS)
- THE FOLLOWING TOLERANCES APPLY FOR OVERALL HEIGHT, MAJOR DIAMETER, AND LABEL PANEL (EXCEPT WHERE NOTED)
 HEIGHT..... ±0.5% OF STATED DIMENSIONS
 DIAMETERS..... ±1.0% OF STATED DIMENSIONS
- THE FOLLOWING CAPACITY TOLERANCES APPLY (EXCEPT WHERE NOTED) FOR COLD FILLED CONTAINERS NOMINAL CAPACITY
 ≤300ml.....AVERAGE +6ml - 0.0
 >300ml TO ≤1000ml.....AVERAGE +1.6% - 0.0
 >1000ml TO <2000ml.....AVERAGE +1.2% - 0.0
 ≥2000ml.....AVERAGE +1.0% - 0.0
- DIMENSIONS AND WEIGHT ARE SUBJECT TO CHANGE WITH FINAL VOLUMETRIC CALCULATIONS.
- FINAL VOLUME TOLERANCE TO BE DEFINED BY



The **CARY COMPANY**
Est. 1895

X:\ENGINEERING\E030 10 12 14 16oz BULLET COLD FILL\16oz Revised Drawings 6-9-16\1167-11-BD-C-02 38mmDBJ

FILLPOINT VOLUME= 476.494 ML / 16.11 FL.OZ.		MATERIAL PET	
OVERFLOW VOLUME = 494.334 ML / 16.72 FL.OZ.		FINISH N358015-C 38mm DBJ	
PROPOSED PREFORM 1797-14-PD-B-02 33g		REF. 3 D MODEL FILE 1167-11-BD-M-02 38mmDBJ	
NAME	DATE	<p style="text-align: center;">16 oz BULLET 33g DBJ</p>	
DRAWN D.STRACHAN	6/19/2014		
CHECKED			
ENG APPR.			
MFG APPR.			
Q.A.		SIZE DWG. NO. REV	
COMMENTS:		C 1167-11-BD-C-02	B
PROJECT # E030		SCALE: 1:5	SHEET 2 OF 3