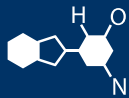


# IF YOU...



MIX IT. FILL IT. PACK IT. SHIP IT.

# WE HAVE A **PRODUCT** FOR YOU

Part #68W24B

Plastic Caps

---

24mm 24-410 Black Ribbed (Matte Top)  
Plastic Cap w/Foam Liner (3-ply)

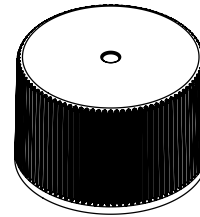
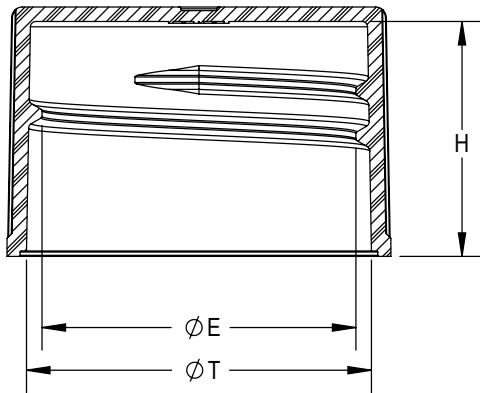
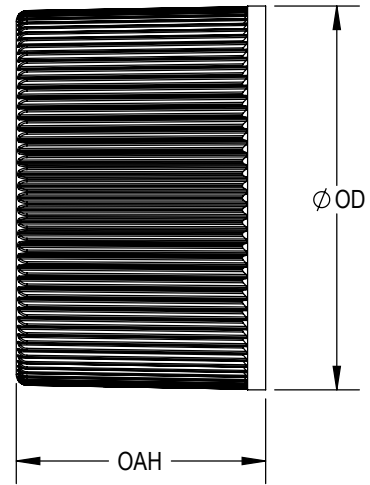
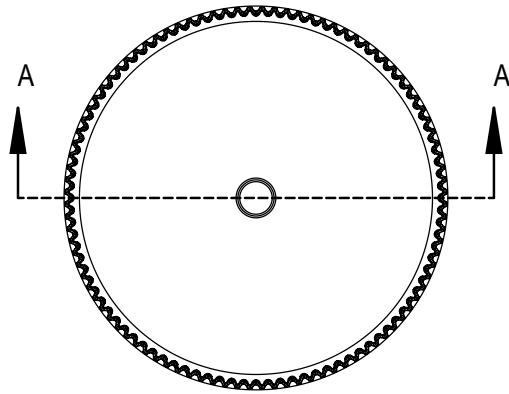
---



---

The  
**CARY**COMPANY  
Est. 1895

1195 W. Fullerton Ave. | Addison, IL 60101 | T: 630.629.6600 | F: 630.629.3690 | [TheCaryCompany.com](http://TheCaryCompany.com)



SCALE 1:1

SECTION A-A

STATIC TORQUE RECOMMENDATION: 10-18 in-lbs  
 REQUIREMENT MAY VARY DEPENDING UPON CONTAINER MATERIAL,  
 NECK FINISH, AND CAPPING EQUIPMENT

DIMENSIONS ENCLOSED IN ( ) INDICATE REFERENCE DIMENSIONS  
 AND NO TOLERANCE LIMITS ARE ESTABLISHED

DIMENSIONS PRECEDED BY AN "\*" INDICATE THE DIMENSION IS  
 PROCESS SENSITIVE. PROCESS SENSITIVE DIMENSIONS ARE  
 VERIFIED TO BE WITHIN THE TOLERANCE LIMITS DURING THE  
 PRODUCTION RUN. ALL REMAINING DIMENSIONS ARE VERIFIED AT  
 PRODUCTION VALIDATION.

THIS MASTER DOCUMENT IS CONTROLLED ELECTRONICALLY.  
 PRINTED OR DOWNLOADED COPIES ARE UNCONTROLLED.  
 DOCUMENT USERS ARE RESPONSIBLE FOR ENSURING THEY HAVE  
 THE LATEST REVISION PRIOR TO USE.

THE PART DIMENSIONS DEPICTED ARE THOSE WHICH HAVE GENERALLY BEEN FOUND TO BE FUNCTIONAL BASED ON INDUSTRY EXPERIENCE.  
 BECAUSE OF VARIABILITY IN CONTAINER FINISHES, EACH CLOSURE/FINISH SYSTEM SHOULD BE INDIVIDUALLY EVALUATED AND TESTED TO  
 ENSURE IT MEETS APPLICABLE PERFORMANCE CRITERIA.

REFERENCE	DIMENSION	TOLERANCE	UNITS
Ø E	0.868 [22.05]	±0.010 [0.25]	in [mm]
Ø T	0.955 [24.26]	±0.010 [0.25]	in [mm]
H	0.640 [16.26]	±0.010 [0.25]	in [mm]
OAH	0.690 [17.53]	±0.010 [0.25]	in [mm]
Ø OD	1.060 [26.92]	±0.010 [0.25]	in [mm]
PART WEIGHT	2.00	± 0.20	g

THREAD DETAIL INFORMATION: 8 THREADS PER INCH 0.125" [3.18] PITCH 450° FULL DEPTH THREADS

DRAWING TITLE:  
**24-410 CT**  
 RL (RIBBED SIDES, MATTE TOP)

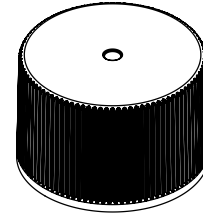
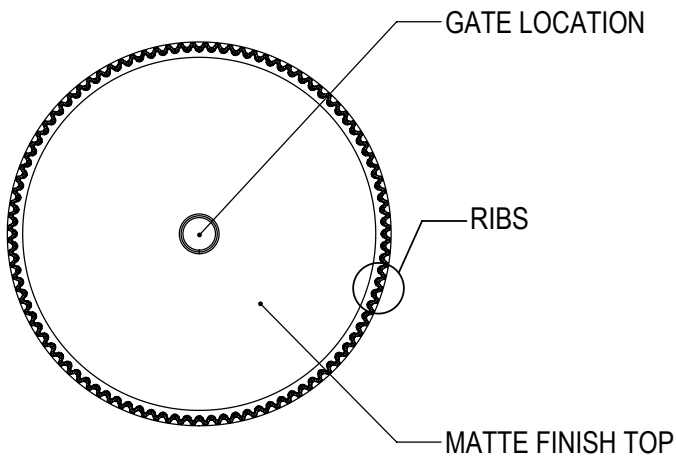
MATERIAL: POLYPROPYLENE

DRAWING TYPE: CUSTOMER DISTRIBUTION CODE: **D**

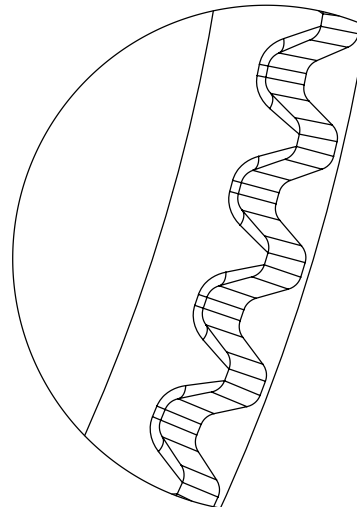
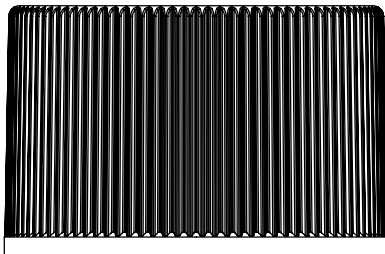
REPLACES DRAWINGS: C-8029

MODEL NUMBER: PM 10724 24-410 CT

DWG SIZE: 8.5" x 11"	DRAWING NUMBER:	REVISION:
SCALE: 2:1 & NOTED	SHEET: 1 OF 3	<b>CQA-10006 01.AE</b>
DRAWN BY: LGF 2/7/2014	ENG APPR: CAN 3/25/2022	QA APPR: TEM 03/28/2022



SCALE 1:1



DETAIL RIBS  
SCALE 20 : 1  
95 EQUISPACED RIBS

DIMENSIONS ENCLOSED IN ( ) INDICATE REFERENCE DIMENSIONS AND NO TOLERANCE LIMITS ARE ESTABLISHED

DATE	REV	N/P	DESCRIPTION	ENG	DRW
3/21/2022	01	AE	UPDATED DRAWING FORMAT, ADDED RIB COUNT, CORRECTED H ON RNF (SHEET 3)	CAN	CAN
04/05/2018	01	AD	CORRECTED RECOMMENDED NECK FINISH MODEL. SHEET 1 H DIMENSION CHANGED ORIGIN TO INSIDE CAP	BDG	DAS
04/27/2016	01	AC	UPDATED DRAWING FORMAT	BDG	DAS
11/04/2014	01	AB	UPDATED AS MOLDED (24101) DATA FROM 02/06/14 AND HISTORICAL DATA FROM 24007, ADDED OBSOLETE NOTE, REVISED RECOMMENDED NECK FINISH	LMB	LMB
02/07/2014	01	AA	DRAWING CREATED	LGF	LGF

DRAWING TITLE:

**24-410 CT**  
**RL (RIBBED SIDES, MATTE TOP)**  
**(MANUAL DESCRIPTION)**

THIS MASTER DOCUMENT IS CONTROLLED ELECTRONICALLY. PRINTED OR DOWNLOADED COPIES ARE UNCONTROLLED. DOCUMENT USERS ARE RESPONSIBLE FOR ENSURING THEY HAVE THE LATEST REVISION PRIOR TO USE.

DRAWING TYPE: CUSTOMER      DISTRIBUTION CODE: **D**

DWG SIZE: 8.5" x 11"	DRAWING NUMBER:	REVISION:
SCALE: 2:1 & NOTED	SHEET: 2 OF 3	<b>CQA-10006 01.AE</b>

**REVISION HISTORY**  
 REVISIONS: REV: A PHYSICAL CHANGE TO THE PART IMPACTING FIT, FORM OR FUNCTION  
 N/P: DRAWING OR SPECIFICATION CHANGE ONLY

