

IF YOU...



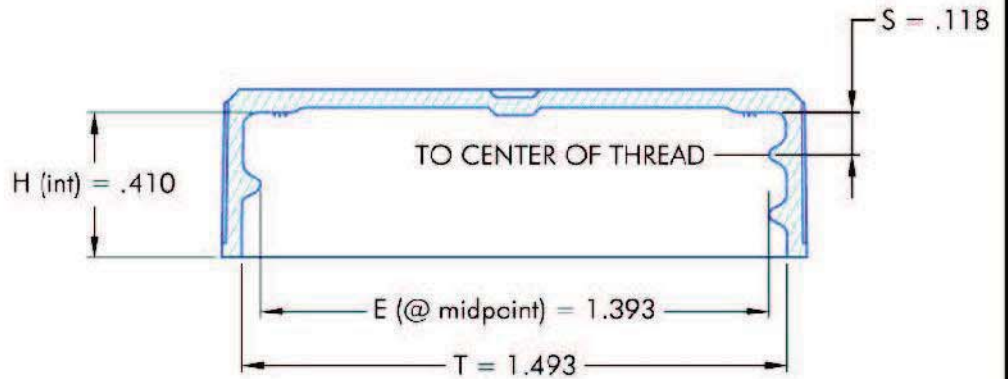
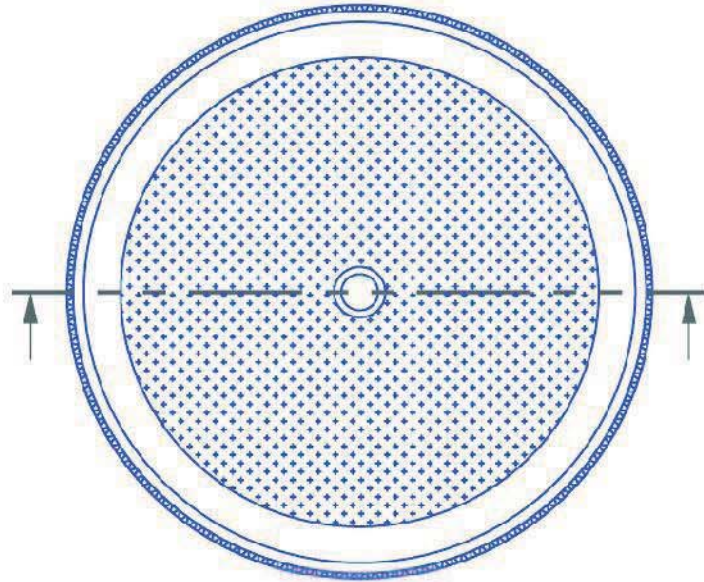
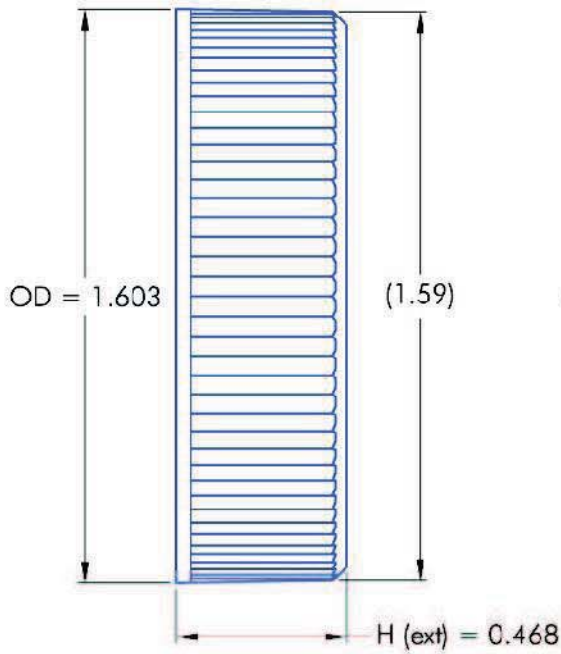
MIX IT. FILL IT. PACK IT. SHIP IT.

WE HAVE A PRODUCT FOR YOU



Part #	68W38B
Neck Width	38mm
Neck Finish	38-400
Cap Liner	SureSeal® SS-222 3-ply co-extruded Foam Liner
Color	Black
Material	PP
Case Pack	3,750 ea.
Pallet Pack	56,250 ea. (15 Cases)
Case Weight	31.316 lbs.
Case Dimensions	24" x 16" x 15"
Pallet Dimensions	48" x 40" x 50"
FDA Approved	Yes

68W38L



NOTES: (UNLESS OTHERWISE SPECIFIED)

1. ALL DIMENSIONS ARE IN INCHES.
2. TOLERANCE ON ALL DIMENSIONS IS ± 0.010 INCHES.

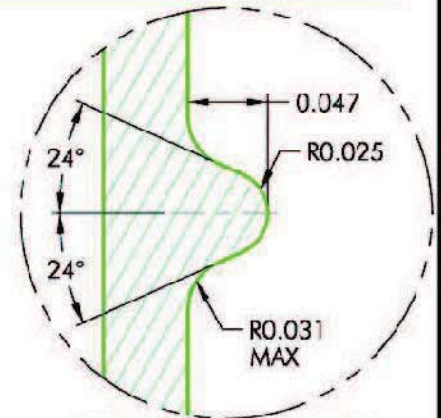
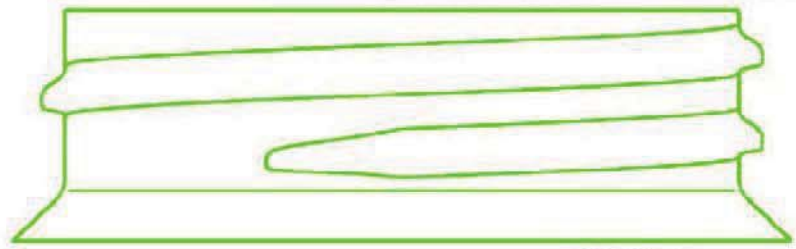
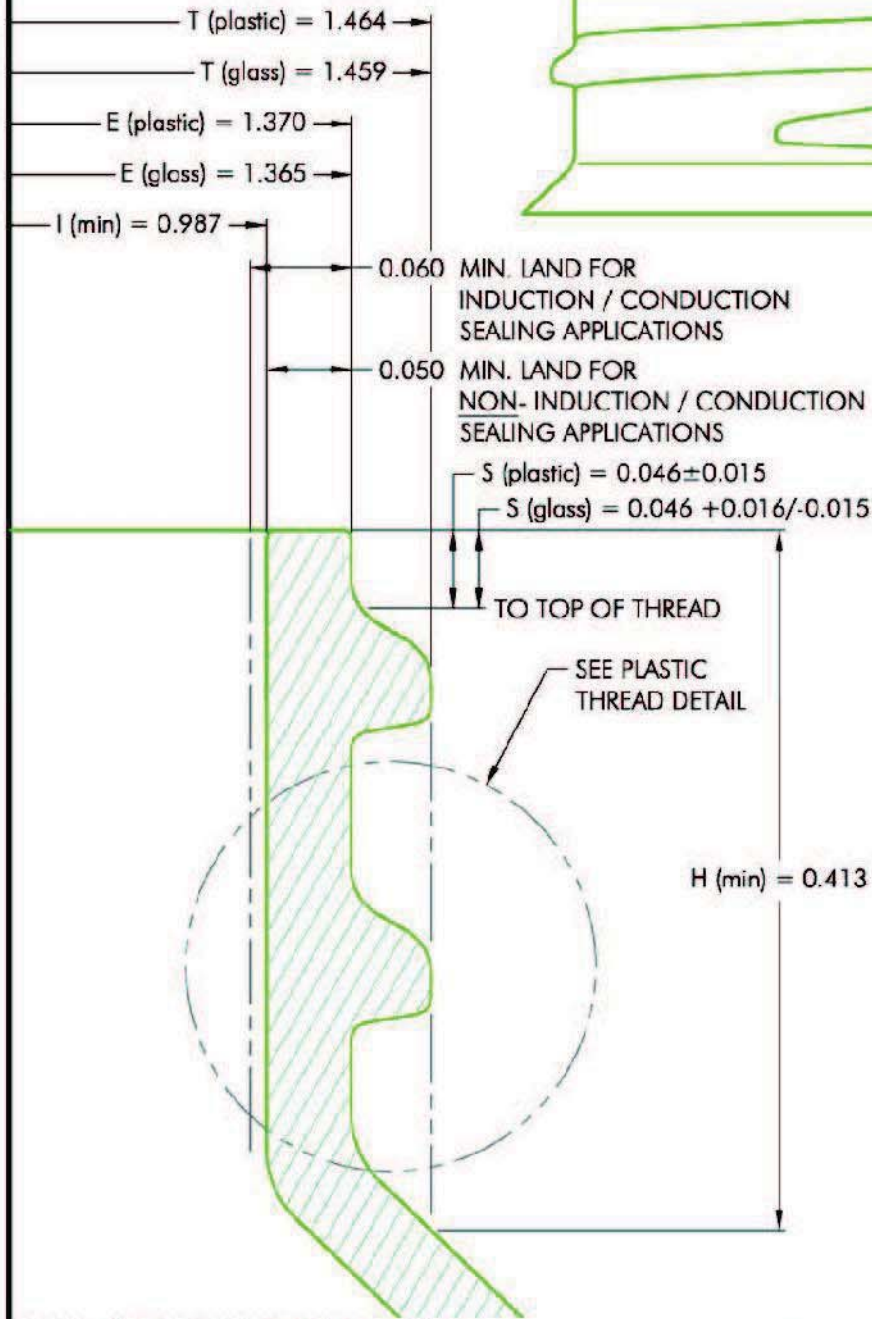
REV	DATE	DESCRIPTION	BY



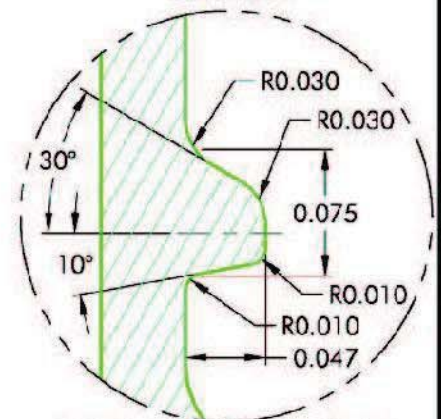
Supplied By: **The Cary Company**
 Ph: 630-629-6600
 www.thecarycompany.com

PITCH (TPI): 6	# OF TURNS: 1-3/16	MATERIAL: POLYPROPYLENE
DRAWING #:		38-400-6213 (S)
DESCRIPTION:		
FINE RIB / CHAMFERED TOP WITH MATTE FINISH		
FILE:	38-400-6213S-R6.dwg	SCALE: 2 : 1
DRAWN BY: DMN	DATE: 06.27.02	APPRVD BY: LRE
REV: 6	WP	

68W38L



GLASS THREAD DETAIL
SCALE 10 : 1



PLASTIC THREAD DETAIL
SCALE 10 : 1

MATERIAL	TOLERANCE
PP / PE	± 0.012
PET	± 0.006
GLASS	$+0.017 / -0.018$

NOTES: (UNLESS OTHERWISE SPECIFIED)
 1. ALL DIMENSIONS ARE IN INCHES.
 2. TOLERANCE ON ALL DIMENSIONS GIVEN BY CHART.

#	DATE	DESCRIPTION	BY
00.00.00			



Supplied By: **The Cary Company**
 Ph: 630-629-6600
 www.thecarycompany.com

PITCH (TPI): 6	# OF TURNS: 1-1/4	MATERIAL: PER CHART
DRAWING #: 38-400-FINISH		
DESCRIPTION: FINISH FOR USE WITH PCI 38-400 CLOSURES		
FILE: 38-400-FINISH.dwg	SCALE: 10 : 1	
DRAWN BY: BEZ	DATE: 08.31.93	APPRVD BY: LRE
	REV: 0	BF