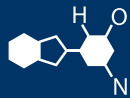


IF YOU...



MIX IT. FILL IT. PACK IT. SHIP IT.

WE HAVE A PRODUCT FOR YOU

Part #68W38E

Tamper Evident Beverage Caps

38mm Drop-Lok® White Ribbed Plastic Cap w/EVA Liner



The
CARYCOMPANY
Est. 1895

NOTES:

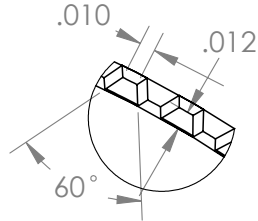
8 THREADS/INCH

DEVIATIONS FROM REFERENCE DIMENSIONS WHICH WILL NOT AFFECT FUNCTION ARE ACCEPTABLE.

HEIGHT DIMENSIONS SUBJECT TO VARIATION DUE TO "CRUSHING" DURING PART EJECTION.

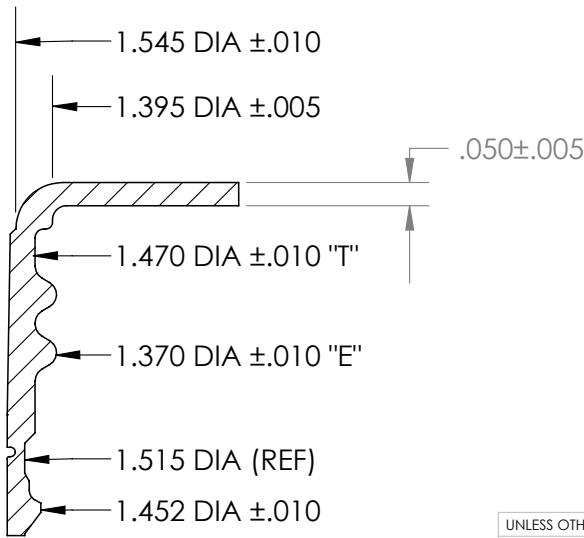
ADD .010" FOR TOP EMBOSS.

THE DROP-LOK® CLOSURE IS NOT A VENTED CLOSURE AND SHOULD NOT BE USED ON APPLICATIONS THAT PRODUCE INTERNAL PRESSURE IN THE BOTTLE DUE TO CARBONATION, FERMENTATION, ETC.



120 KNURLS
DETAIL B
SCALE 10 : 1

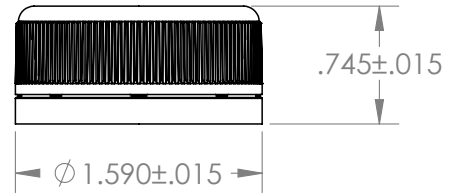
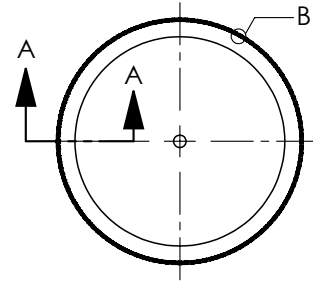
ZONE	REV.	DESCRIPTION	DATE	APPROVED
	A	CHANGED NAME IN TITLE BLOCK TO HOFFER	8/27/98	SJL
	A1	REDRAWN IN CAD	3/7/08	WEI
	B	REMOVED 1769 GLASS BOTTLE FINISH	5/19/08	WEI
	C	ADDED NON-VENTED CLOSURE NOTE	3/16/12	WEI



SECTION A-A
SCALE 3 : 1

GLASS FINISH: 1768 (B)

PLASTIC FINISH: 1763 & 1787



UNLESS OTHERWISE SPECIFIED:		NAME	DATE
DIMENSIONS ARE IN INCHES		DRAWN	WEI 3/7/08
TOLERANCES:		DESIGN	
FRACTIONAL: ±		APPROVED	
ANGULAR: ± 1°		COMMENTS:	
TWO PLACE DECIMAL ± .010		LINER:	
THREE PLACE DECIMAL ± .005		SS222	1.480 DIA .030 ±.005 THICK
INTERPRET GEOMETRIC TOLERANCING PER:		EVA A-300	1.480 DIA .028 ±.003 THICK
MATERIAL		POLYPROPYLENE	
FINISH			
DO NOT SCALE DRAWING			

TITLE:
38 mm DROP-LOK®

SIZE	DWG. NO.	REV
A	CA 38-18	C

SCALE: 1:1 Shrink: SHEET 1 OF 1

5

4

3

2

1