

# IF YOU...



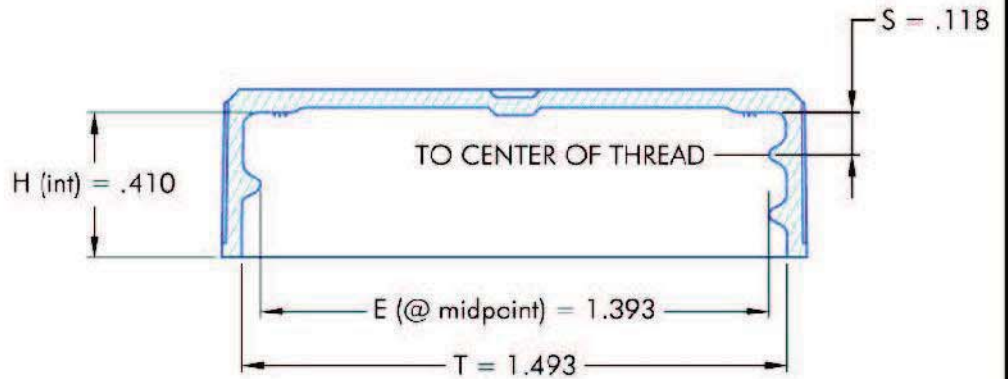
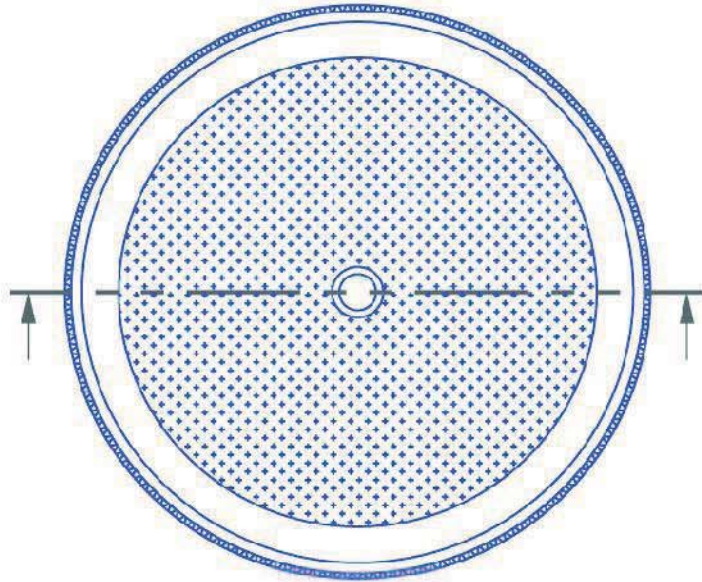
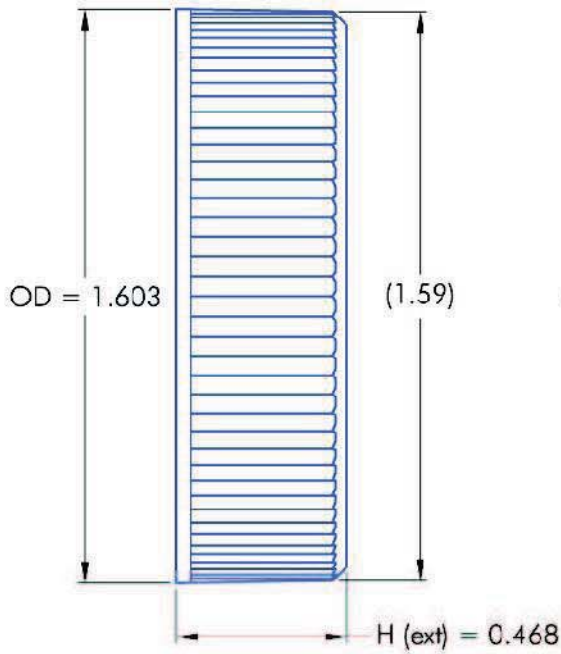
MIX IT. FILL IT. PACK IT. SHIP IT.

## WE HAVE A PRODUCT FOR YOU



Part #	68W38L
Neck Width	38mm
Neck Finish	38-400
Cap Liner	SureSeal® SS-222 3-ply Co-Extruded Foam Liner
Color	White
Material	PP
Case Pack	3,750 ea.
Pallet Pack	56,250 ea. (15 Cases)
Case Weight	33.316 lbs.
Case Dimensions	24 x 16" x 15"
Pallet Dimensions	48" x 40" x 50"
FDA Approved	Yes

68W38L



NOTES: (UNLESS OTHERWISE SPECIFIED)

1. ALL DIMENSIONS ARE IN INCHES.
2. TOLERANCE ON ALL DIMENSIONS IS  $\pm 0.010$  INCHES.

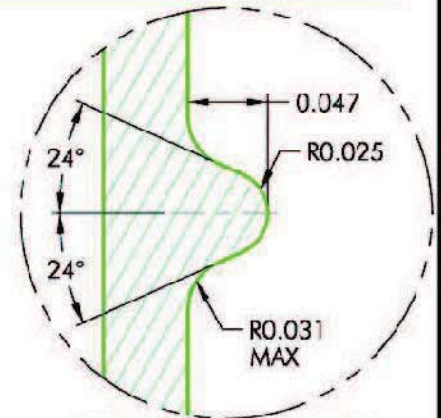
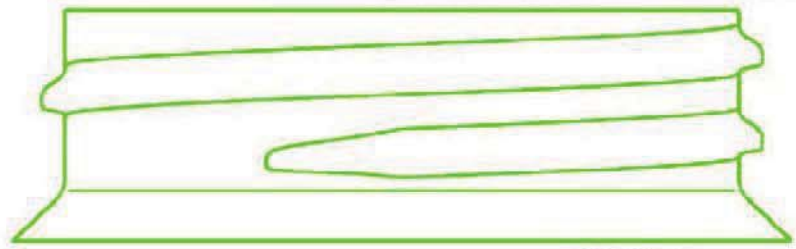
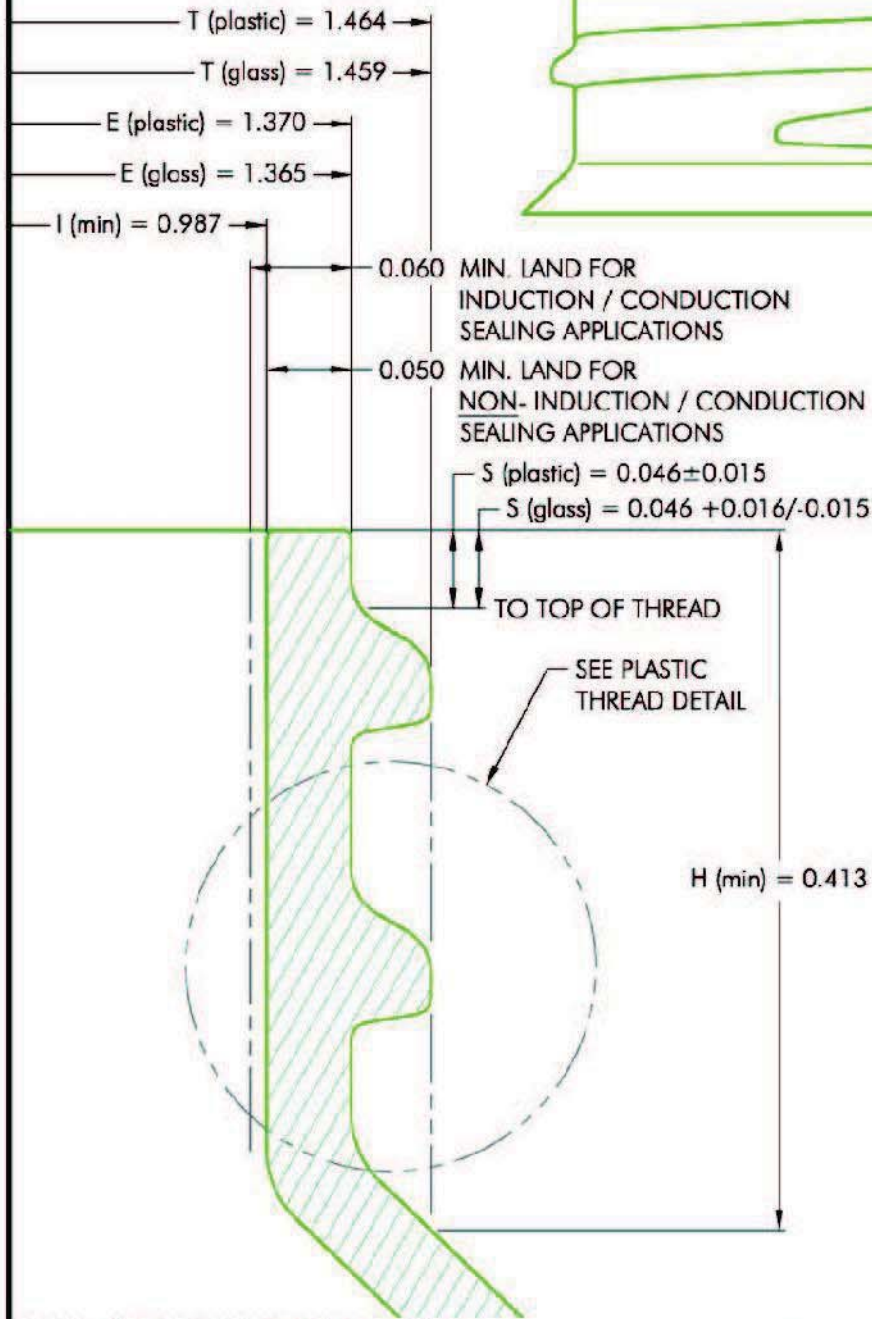
REV	DATE	DESCRIPTION	BY



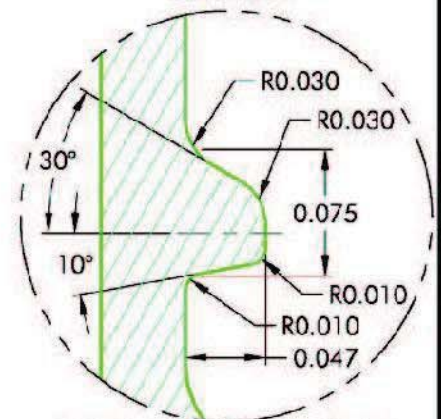
Supplied By: **The Cary Company**  
 Ph: 630-629-6600  
 www.thecarycompany.com

PITCH (TPI): 6	# OF TURNS: 1-3/16	MATERIAL: POLYPROPYLENE
DRAWING #:		38-400-6213 (S)
DESCRIPTION:		
FINE RIB / CHAMFERED TOP WITH MATTE FINISH		
FILE:	38-400-6213S-R6.dwg	SCALE: 2 : 1
DRAWN BY: DMN	DATE: 06.27.02	APPRVD BY: LRE
REV: 6	WP	

# 68W38L



**GLASS THREAD DETAIL**  
SCALE 10 : 1



**PLASTIC THREAD DETAIL**  
SCALE 10 : 1

MATERIAL	TOLERANCE
PP / PE	$\pm 0.012$
PET	$\pm 0.006$
GLASS	$+0.017 / -0.018$

NOTES: (UNLESS OTHERWISE SPECIFIED)  
 1. ALL DIMENSIONS ARE IN INCHES.  
 2. TOLERANCE ON ALL DIMENSIONS GIVEN BY CHART.

#	00.00.00		
REV	DATE	DESCRIPTION	BY



Supplied By: **The Cary Company**  
 Ph: 630-629-6600  
 www.thecarycompany.com

PITCH (TPI): 6	# OF TURNS: 1-1/4	MATERIAL: PER CHART
DRAWING #: <b>38-400-FINISH</b>		
DESCRIPTION: <b>FINISH FOR USE WITH PCI 38-400 CLOSURES</b>		
FILE: 38-400-FINISH.dwg	SCALE: 10 : 1	
DRAWN BY: BEZ	DATE: 08.31.93	APPRVD BY: LRE
	REV: 0	BF