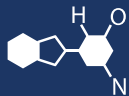


IF YOU...



MIX IT. FILL IT. PACK IT. SHIP IT.

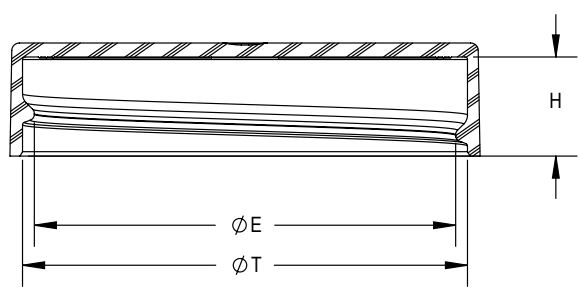
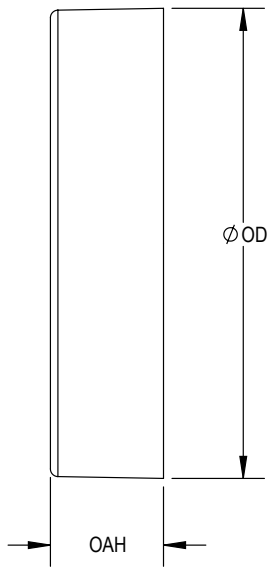
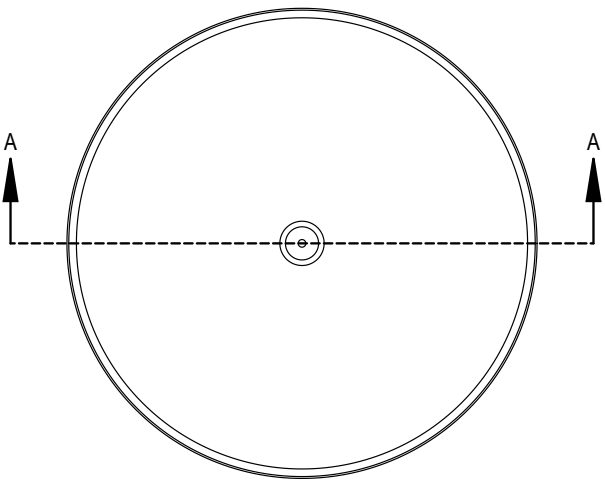
WE HAVE A **PRODUCT** FOR YOU

Part #: 68W45W



The
CARYCOMPANY
Est. 1895

1195 W. Fullerton Ave. | Addison, IL 60101 | T: 630.629.6600 | F: 630.629.3690 |



SECTION A-A

THREAD DETAIL: 6 THREADS PER INCH, 0.167" PITCH			
REFERENCE	TOLERANCE	UNITS	DIMENSION
E	±.010[0.25]	in [mm]	1.656 [42.06]
T	±.010[0.25]	in [mm]	1.752 [44.50]
H	±.010[0.25]	in [mm]	0.390[9.91]
OD	±.012[0.30]	in [mm]	1.850[46.99]
OAH	±.010[0.25]	in [mm]	0.445 [11.30]
PART WEIGHT	± 0.50	g	3.69

STATIC TORQUE RECOMMENDATION
17-27 in-lbs
 THIS REQUIREMENT MAY VARY DEPENDING UPON BOTTLE MATERIAL, NECK FINISH, AND CAPPING EQUIPMENT

THE CLOSURE DIMENSIONS DEPICTED ARE THOSE WHICH HAVE GENERALLY BEEN FOUND TO BE FUNCTIONAL BASED ON INDUSTRY EXPERIENCE BECAUSE OF VARIABILITY IN GLASS AND PLASTIC CONTAINER FINISHES. EACH CLOSURE/FINISH SYSTEM SHOULD BE INDIVIDUALLY EVALUATED AND TESTED TO ENSURE IT MEETS APPLICABLE PERFORMANCE CRITERIA. SEE QUALITY ASSURANCE SPECIFICATIONS FOR ADDITIONAL INFORMATION.

THE CARY COMPANY RESERVES THE RIGHT TO REVISE ANY OR ALL SPECIFICATIONS AND REQUIREMENTS.

DRAWING TYPE: **CUSTOMER**

REPLACES DRAWINGS: C-1010	DIMENSIONS ENCLOSED IN () INDICATE REFERENCE DIMENSIONS AND NO TOLERANCE LIMITS ARE ESTABLISHED		
TOLERANCES UNLESS OTHERWISE SPECIFIED			
DIMENSION (inches)	TOLERANCE	DIMENSION (mm)	TOLERANCE
0-0.787	±0.006	0-20	±0.152
0.788-1.181	±0.008	21-30	±0.203
1.182-2.756	±0.012	31-70	±0.305
2.757-3.937	±0.016	71-100	±0.406
3.938-5.096	±0.020	101-150	±0.508
5.097-7.874	±0.024	151-200	±0.610
7.875-9.843	±0.032	201-250	±0.813
ANGULAR TOLERANCE ± 2°			
PROPRIETARY AND CONFIDENTIAL			
THIS DRAWING IS PROTECTED BY COPYRIGHT AND CONTAINS INFORMATION PROPRIETARY TO THE CARY COMPANY. ANY REPRODUCTION, DISCLOSURE, OR USE OF ITS CONTENTS OR ANY PART THEREOF IS EXPRESSLY PROHIBITED EXCEPT AS OTHERWISE MAY AGREE IN WRITING			

The CARY COMPANY
Est. 1895

THIRD ANGLE PROJECTION

DISTRIBUTION CODE: **D**

DRAWING NAME: **45-400 CT CLOSURE**
SS (Smooth Side - Smooth Top)

DRAWING NUMBER: **CQA - 10300**

DRAWN BY:	JDM	6/3/2016	MATERIAL:	POLYPROPYLENE
ENG APPR.:	BDG	8/17/2017	MODEL NUMBER:	PM 10297 45-400 CT
QA APPR.:	REL	09/05/2017	SCALE:	1:1
			SHEET SIZE:	8.5in*11in
			SHEET:	1 of 3
			REV.NP:	00.AB