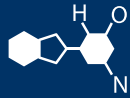


IF YOU...



MIX IT. FILL IT. PACK IT. SHIP IT.

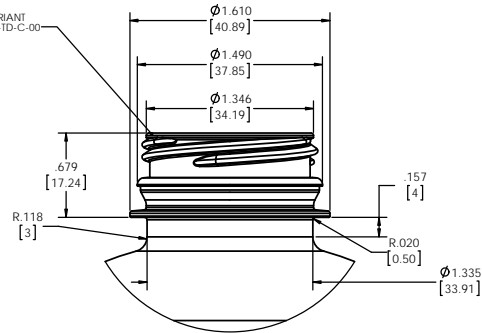
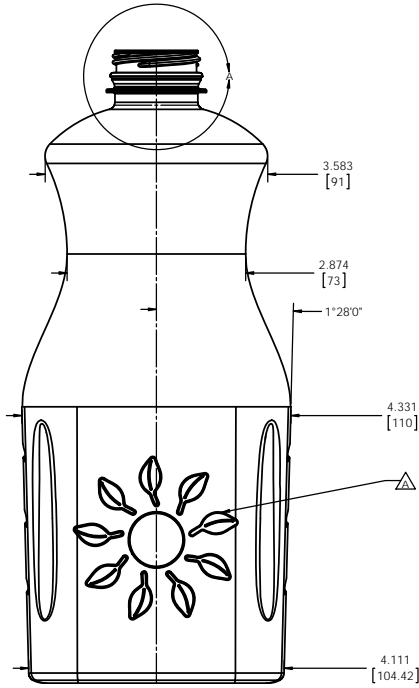
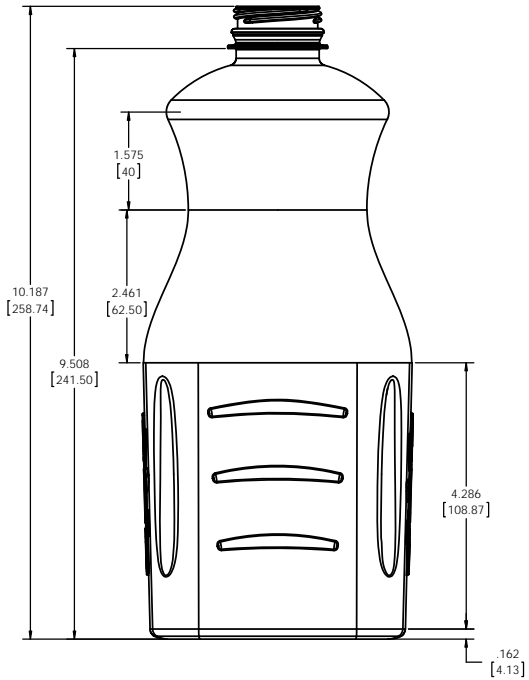
WE HAVE A **PRODUCT** FOR YOU

Part # 68W64J

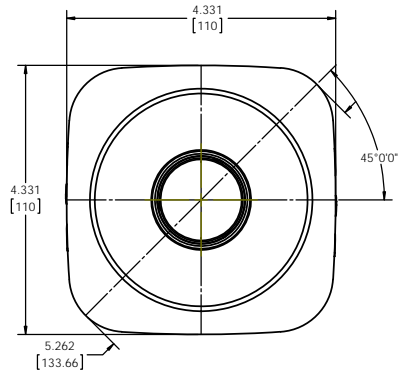
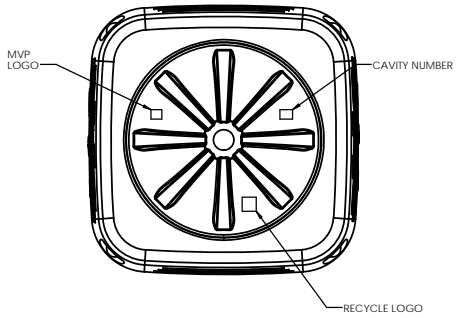
64 oz. Clear PET Plastic Tamper Evident Juice
Bottle, 38mm 358DBJ



REVISIONS			
REV	DESCRIPTION	DATE	APPROVED
A	ADDED SUNBURST LEAF ELEMENTS	5/7/2012	DCC



DETAIL A
SCALE 2: 1



PRELIMINARY PRINT
THIS CONCEPT DRAWING IS SUBJECT TO CHANGE AND IS NOT APPROVED FOR MANUFACTURE. USE FOR PROJECT DISCUSSION PURPOSES ONLY.

NOTES:
1. DIMENSIONS AND WEIGHT ARE SUBJECT TO CHANGE WITH FINAL VOLUMETRIC CALCULATIONS.
2. FINAL VOLUME TOLERANCE TO BE DEFINED BY MFG. DATA.

FILL POINT VOLUME - 1894.1 CC / 64.0 FLOZ.	OVERFLOW VOLUME - 1910.9 CC / 64.6 FLOZ.	MATERIAL - PET
PROPOSED PREFORM 0579-08-PD-C-00 71.5 GRAMS	38MM DBJ	N358015C
REF. 3D MODEL FILE 1340-12-BD-D-01	DevTech Labs, Inc.	
PROPRIETARY AND CONFIDENTIAL	DATE 2/23/2012	TITLE: 64-OUNCE 38MM DBJ TAPERED CARAFE BOTTLE DESIGN
THE INFORMATION CONTAINED IN THIS DRAWING IS THE SOLE PROPERTY OF DEVTECH LABORATORIES, INC. ANY REPRODUCTION OR TRANSMISSION OF THIS DRAWING WITHOUT THE WRITTEN PERMISSION OF DEVTECH LABORATORIES, INC. IS PROHIBITED.	DESIGNER: D. CONNOR	SCALE: 1:1
DO NOT SCALE DRAWINGS	CHECKED:	REV: A
COMMENTS:	DATE:	SHEET 1 OF 1
PROJECT # PR12-170	SIZE: DWG. NO. D 1340-12-BD-D-01	REV: A