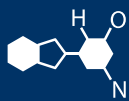


IF YOU...



MIX IT. FILL IT. PACK IT. SHIP IT.

WE HAVE A PRODUCT FOR YOU

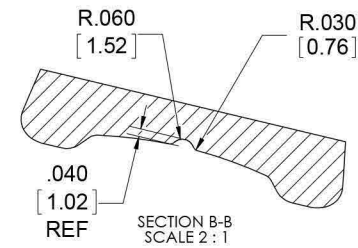
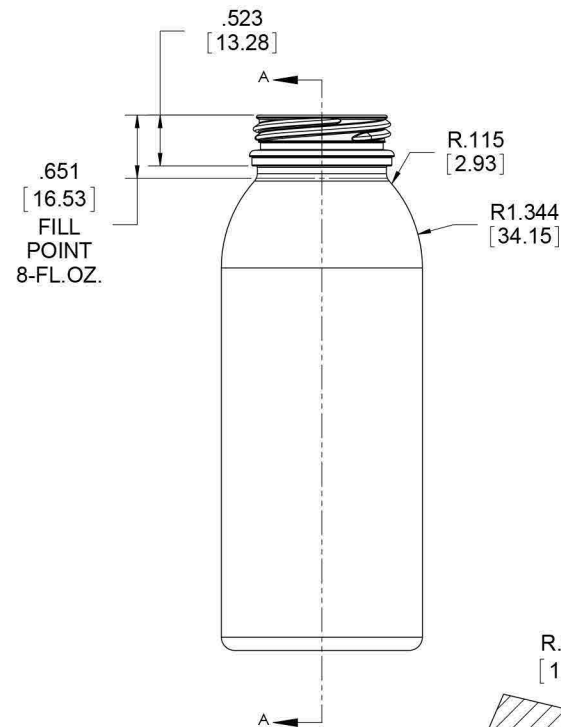
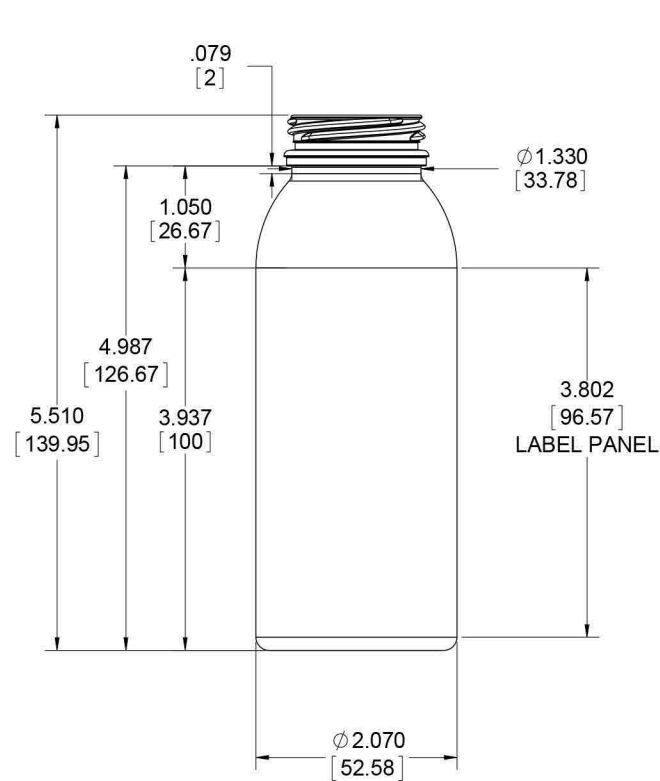
Part # 68W8ES

8 oz. Clear PET Plastic Energy Shot Bottle,
38mm 358DBJ



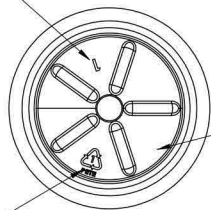
REVISIONS			
REV.	DESCRIPTION	DATE	APPROVED
A	INCREASED BASE LAND WAS .030-INCH NOW .049-INCH, CHANGED ANGLE OF BASE TRANSITION WAS 12.5° NOW 22° AND CHANGED TRANSITION RADII TOP WAS .020-INCH NOW .031-INCH AND BOTTOM WAS .039-INCH NOW .059-INCH.	10/29/2013	DCC
B	INCREASED BASE LAND WAS .049-INCH NOW .070-INCH, CHANGED ANGLE OF BASE TRANSITION WAS 22° NOW 22.5°	12/5/2013	DWS

RELEASED FOR MANUFACTURE 12-19-13

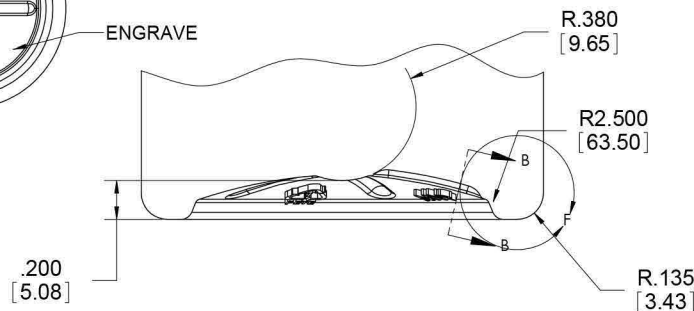


ENGRAVE CAVITY NUMBER

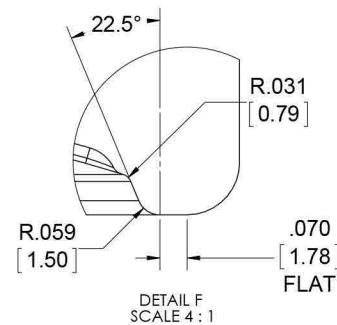
ENGRAVE RECYCLE LOGO



ENGRAVE



SECTION A-A
SCALE 2 : 1



DETAIL F
SCALE 4 : 1

DO NOT SCALE DRAWING

The
CARY COMPANY
Est. 1895

CALCULATED FILLPOINT VOLUME= 238-ML / 8.0-FL.OZ.

OVERFLOW VOLUME = 250.7-ML / 8.5-FL.OZ.

PROPOSED PREFORM 18.75-gr. 1014-11-PD-B-01

REF. 3 D MODEL FILE 1518-12-BD-C-00

MATERIAL PET

FINISH 38MM DBJ

N358015C

NAME	DATE
DRAWN D.STRACHAN	12/5/2013
CHECKED	
ENG APPR.	
MFG APPR.	
G.A.	

8oz ENERGY
23G DBJ

SIZE DWG. NO.

C

SCALE: 1:1

REV

B

SHEET 1 OF 1