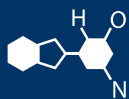


IF YOU...



MIX IT. FILL IT. PACK IT. SHIP IT.

WE HAVE A **PRODUCT** FOR YOU

Part #68WBFS

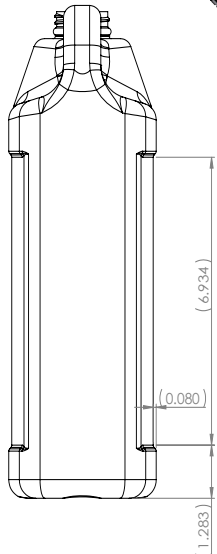
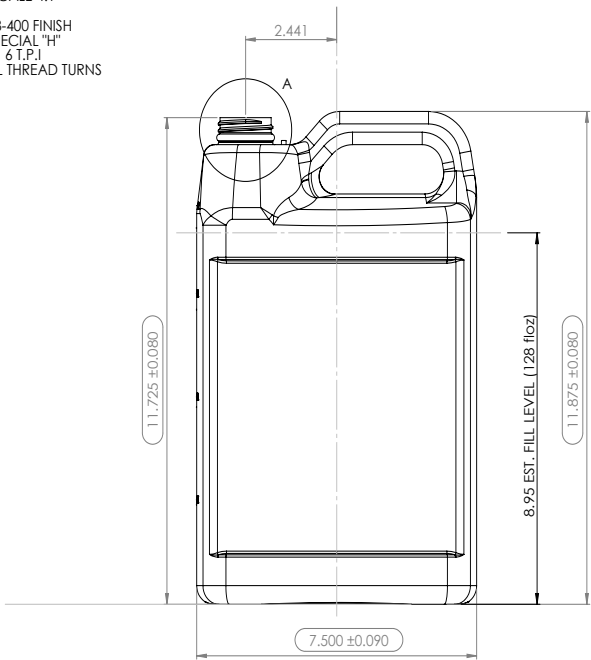
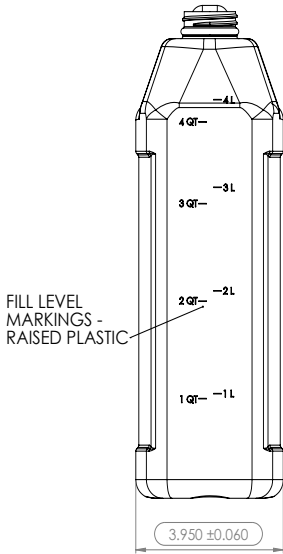
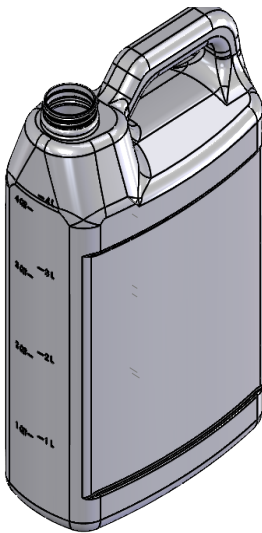
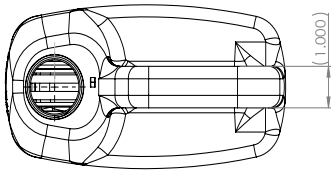
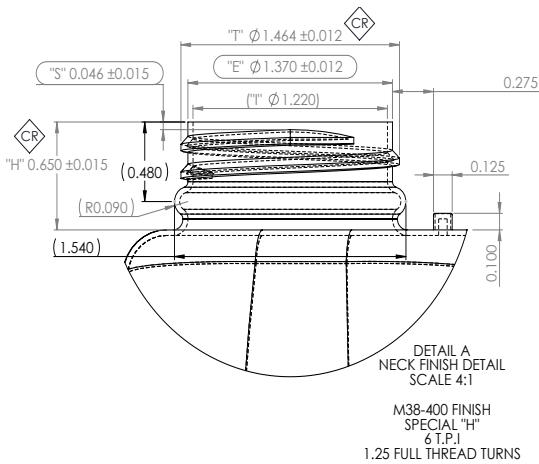
Plastic F-Style Bottles





**1 Gallon Black HDPE Plastic F-Style Bottle,
38mm 38-400, 140 Grams**

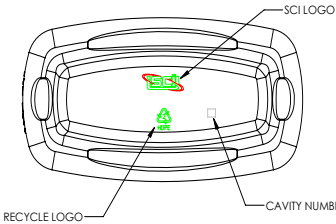


The
CARYCOMPANY
Est. 1895

1195 W. Fullerton Ave. | Addison, IL 60101 | T: 630.629.6600 | F: 630.629.3690 | TheCaryCompany.com



- DIMENSIONS OR NOTES MARKED WITH A  DENOTE CRITICAL CHARACTERISTICS TO BE MONITORED DURING PRODUCTION.
- DIMENSIONS OR NOTES MARKED WITH A  DENOTE CHARACTERISTICS TO BE MONITORED DURING PRODUCTION QUALIFICATION ONLY.
- ALL DIAMETER DIMENSIONS MARKED WITH  OR  SHALL BE DETERMINED BY AVERAGING THE MEASUREMENTS AT PARTING LINE AND 90 DEGREES FROM PARTING LINE.
- REFERENCE ONLY DIMENSIONS CONTAINED IN ().
- MINIMUM CONTAINER WALL THICKNESS .015".
- CONTAINER TOP LOAD REQUIREMENT TO BE TBD LBS. MINIMUM AT 1/4" DEFLECTION.
- MATERIAL HDPE.
- TARGET WEIGHT 140.0 GRAMS.
- OVERFLOW CAPACITY 145 +/- 1.8 fl.oz.
- MEASUREMENTS TAKEN 24 HOURS AFTER MOLDING.



				TITLE: 1 GALLON F-STYLE
C	ADDED 4QT & 4L LEVEL MARKINGS		ZMF	8/30/23
B	UPDATED CAPACITY TO REFLECT ACTUAL		ZMF	5/1/17
A	ADDED "T" DIM REFERENCE		ZMF	4/7/16
REV	DESCRIPTION		BY	DATE
DRAWN BY	DATE	CHECKED BY	DATE	DESCRIPTION
ZMF	3/8/16			PRODUCT DRAWING
				DRWG. NO. 260PD
				SIZE C SCALE 1:2 SHEET 1 OF 1 REV. C