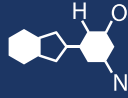


IF YOU...



MIX IT. FILL IT. PACK IT. SHIP IT.

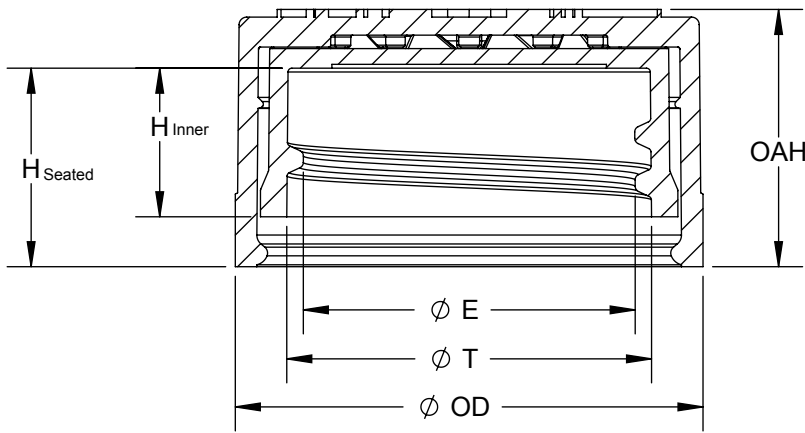
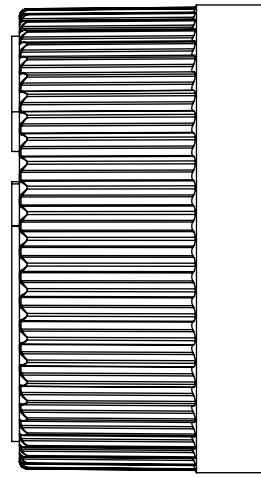
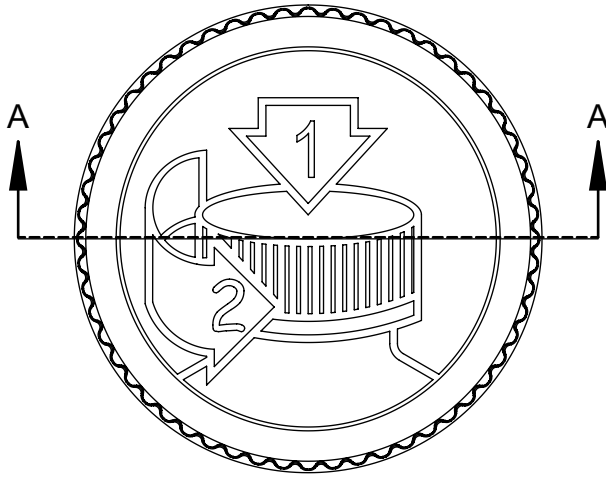
WE HAVE A PRODUCT FOR YOU

Part #: 68WC2P



The
CARYCOMPANY
Est. 1895

1195 W. Fullerton Ave. | Addison, IL 60101 | T: 630.629.6600 | F: 630.629.3690 |



SECTION A-A
SCALE 1:1
SCALE 2:1

8 THREADS PER INCH, .125 PITCH,
380° FULL DEPTH THREAD

REFERENCE	TOLERANCE	DIMENSION	UNITS
E	±0.010 [0.25]	0.865 [21.97]	in [mm]
T	±0.010 [0.25]	0.950 [24.13]	in [mm]
H (Seated)	REFERENCE	0.517 [13.13]	in [mm]
H (Inner)	±0.007 [0.18]	0.388 [9.86]	in [mm]
OAH	±0.015 [0.38]	0.668 [16.97]	in [mm]
OD	±0.015 [0.38]	1.217 [30.91]	in [mm]
PART WEIGHT	± 0.60	4.10	g

STATIC TORQUE RECOMMENDATION
10-18 in-lbs
THIS REQUIREMENT MAY VARY DEPENDING
UPON BOTTLE MATERIAL, NECK FINISH, AND
CAPPING EQUIPMENT

DRAWING TYPE : CUSTOMER

REPLACES DRAWINGS:
C-8016

DIMENSIONS ENCLOSED IN ()
INDICATE REFERENCE
DIMENSIONS AND NO TOLERANCE
LIMITS ARE ESTABLISHED

TOLERANCES UNLESS OTHERWISE SPECIFIED

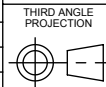
DIMENSION (inches)	TOLERANCE	DIMENSION (mm)	TOLERANCE
0-0.787	±0.006	0-20	±0.152
0.788-1.181	±0.008	21-30	±0.203
1.182-2.756	±0.012	31-70	±0.305
2.757-3.937	±0.016	71-100	±0.406
3.938-5.096	±0.020	101-150	±0.508
5.097-7.874	±0.024	151-200	±0.610
7.875-9.843	±0.032	201-250	±0.813

ANGULAR TOLERANCE ± 2°

PROPRIETARY AND CONFIDENTIAL

THIS DRAWING IS PROTECTED BY COPYRIGHT AND CONTAINS INFORMATION
PROPRIETARY TO THE CARY COMPANY. ANY REPRODUCTION, DISCLOSURE,
OR USE OF ITS CONTENTS OR ANY PART THEREOF IS EXPRESSLY
PROHIBITED EXCEPT AS OTHERWISE MAY AGREE IN WRITING

The
CARY COMPANY
Est. 1895



THIRD ANGLE
PROJECTION

DISTRIBUTION
CODE
D

DRAWING NAME

24-400 CRC ASSM
PICTO LOGO

DRAWING NUMBER

CQA - 10156

MATERIAL

POLYPROPYLENE

DRAWN BY.

BDG

1/19/2016

ENG APPR.

BDG

6/23/2017

QA APPR.

REL

7/5/2017

MODEL NUMBER

PM 10153 24-400 CRC PDT Assm

SCALE

1:1

SHEET SIZE

11in*17in

SHEET

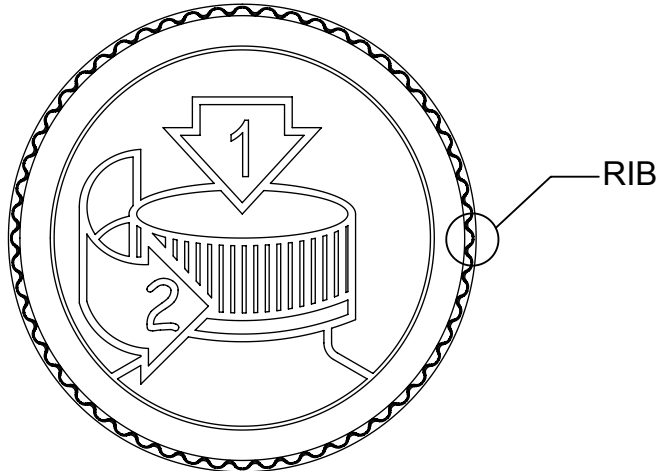
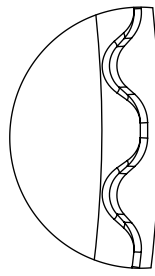
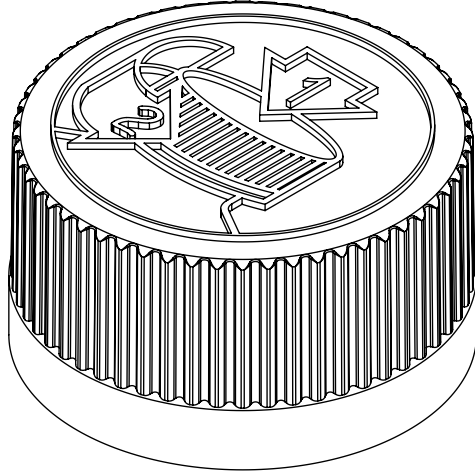
1 of 3

REV.NP

01.AE

P: 630-629-6600 | F: 630-629-3690
1195 W. Fullerton Ave. Addison, IL 60101
www.thecarycompany.com

REVISIONS					
DATE	REV.	N/P	DESCRIPTION	ENG	DRW
10/20/14	01	AA	INITIAL DRAWING RELEASED	BDG	BDG
05/27/16	01	AB	UPDATED SPEC BASED ON REQUALIFICATION AND ADDITION OF CAPACITY MOLD	BDG	BDG
01/06/17	01	AC	UPDATED PRINT FORMAT	BDG	BDG
01/13/17	01	AD	CORRECTED RNF E DIM 0.848 WAS 1.848	BDG	BDG
06/23/17	01	AE	CORRECTED H TOLERANCE 0.18 WAS .018	BDG	BDG



DETAIL RIB
SCALE 10 : 1
(56) EQUISPACED RIBS

SCALE 2 : 1

DRAWING TYPE : CUSTOMER

REFERENCES: DIMENSIONS ENCLOSED IN () INDICATE REFERENCE DIMENSIONS AND NO TOLERANCE LIMITS ARE ESTABLISHED

TOLERANCES UNLESS OTHERWISE SPECIFIED			
DIMENSION (inches)	TOLERANCE	DIMENSION (mm)	TOLERANCE
0-0.787	±0.006	0-20	±0.152
0.788-1.181	±0.008	21-30	±0.203
1.182-2.756	±0.012	31-70	±0.305
2.757-3.937	±0.016	71-100	±0.406
3.938-5.096	±0.020	101-150	±0.508
5.097-7.874	±0.024	151-200	±0.610
7.875-9.843	±0.032	201-250	±0.813

ANGULAR TOLERANCE ± 2°
PROPRIETARY AND CONFIDENTIAL

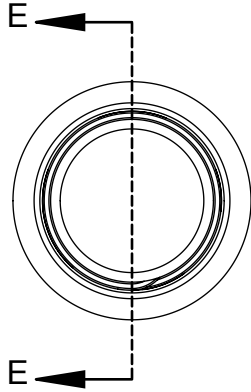
THIS DRAWING IS PROTECTED BY COPYRIGHT AND CONTAINS INFORMATION PROPRIETARY TO THE CARY COMPANY. ANY REPRODUCTION, DISCLOSURE, OR USE OF ITS CONTENTS OR ANY PART THEREOF IS EXPRESSLY PROHIBITED EXCEPT AS OTHERWISE MAY AGREE IN WRITING



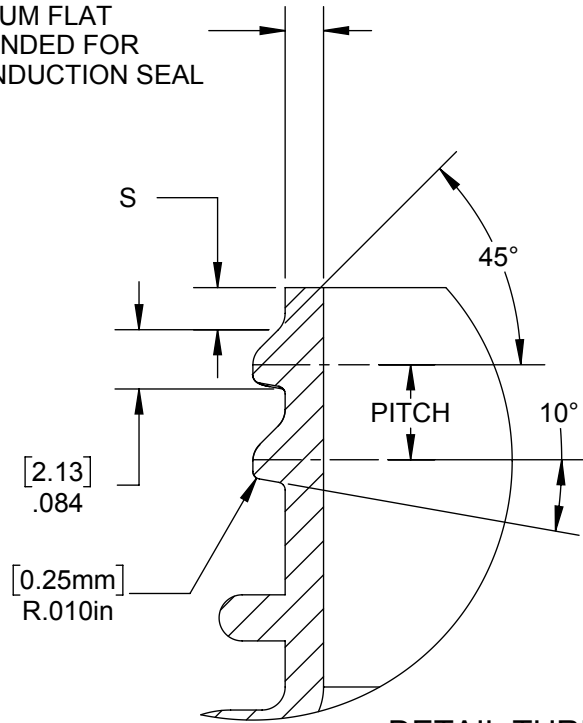
THE CLOSURE DIMENSIONS DEPICTED ARE THOSE WHICH HAVE GENERALLY BEEN FOUND TO BE FUNCTIONAL BASED ON INDUSTRY EXPERIENCE BECAUSE OF VARIABILITY IN GLASS AND PLASTIC CONTAINER FINISHES. EACH CLOSURE/FINISH SYSTEM SHOULD BE INDIVIDUALLY EVALUATED AND TESTED TO ENSURE IT MEETS APPLICABLE PERFORMANCE CRITERIA. SEE QUALITY ASSURANCE SPECIFICATIONS FOR ADDITIONAL INFORMATION.

P: 630-629-6600 | F: 630-629-3690
1195 W. Fullerton Ave. Addison, IL 60101
www.thecarycompany.com

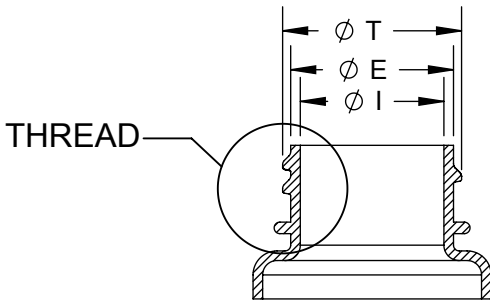
THIRD ANGLE PROJECTION	DISTRIBUTION CODE	DRAWING NAME			
		24-400 CRC ASSM PICTO LOGO			
DRAWN BY.	BDG	1/19/2016	DRAWING NUMBER		
			CQA - 10156		
ENG APPR.	BDG	6/23/2017	MATERIAL		
			POLYPROPYLENE		
QA APPR.	REL	7/5/2017	MODEL NUMBER		
			PM 10153 24-400 CRC PDT Assm		
		SCALE	SHEET SIZE	SHEET	REV.NP
		1:2	8.5 X 11	2 of 3	01.AE



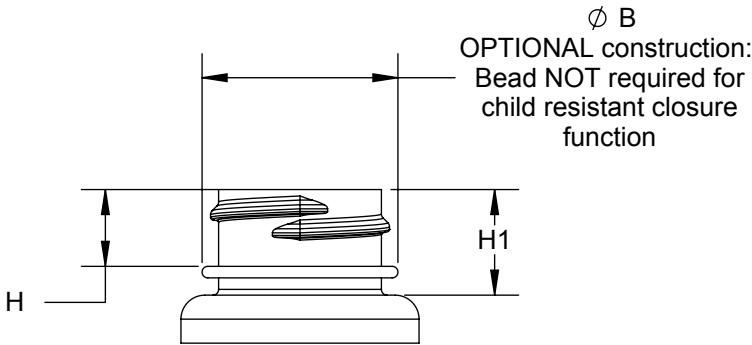
[1.27mm]
 .050 MINIMUM FLAT
 RECOMMENDED FOR
 PROPER INDUCTION SEAL



DETAIL THREAD
 SCALE 4 : 1



SECTION E-E



REFERENCE	TOLERANCE	UNITS	DIMENSION
E	±0.008 [0.20]	in [mm]	0.848 [21.54]
T	±0.008 [0.20]	in [mm]	0.932 [23.67]
I	MINIMUM	in [mm]	0.516 [13.11]
S	±0.015 [0.38]	in [mm]	0.046 [1.17]
H	MINIMUM	in [mm]	0.400 [10.16]
H1	MINIMUM	in [mm]	0.550 [13.97]
ØBEAD	MAXIMUM	in [mm]	1.020 [25.91]
TPI		in	8
PITCH		in [mm]	0.125 [3.16]

NOTE: THE NOMINAL ORIENTATION ILLUSTRATED IS BASED ON NOMINAL DIMENSIONS OF BOTH THE CLOSURE AND THE RECOMMENDED NECK FINISH. FOR EXACT ORIENTATION EACH BOTTLE SHOULD BE EVALUATED ON A CASE BY CASE BASIS.

THE CLOSURE DIMENSIONS DEPICTED ARE THOSE WHICH HAVE GENERALLY BEEN FOUND TO BE FUNCTIONAL BASED ON INDUSTRY EXPERIENCE BECAUSE OF VARIABILITY IN GLASS AND PLASTIC CONTAINER FINISHES, EACH CLOSURE/FINISH SYSTEM SHOULD BE INDIVIDUALLY EVALUATED AND TESTED TO ENSURE IT MEETS APPLICABLE PERFORMANCE CRITERIA. SEE QUALITY ASSURANCE SPECIFICATIONS FOR ADDITIONAL INFORMATION.

P: 630-629-6600 | F: 630-629-3690
 1195 W. Fullerton Ave. Addison, IL 60101
 www.thecarycompany.com

DRAWING TYPE : CUSTOMER

DIMENSIONS ENCLOSED IN () INDICATE REFERENCE DIMENSIONS AND NO TOLERANCE LIMITS ARE ESTABLISHED

TOLERANCES UNLESS OTHERWISE SPECIFIED

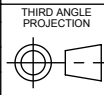
DIMENSION (inches)	TOLERANCE	DIMENSION (mm)	TOLERANCE
0-0.787	±0.006	0-20	±0.152
0.788-1.181	±0.008	21-30	±0.203
1.182-2.756	±0.012	31-70	±0.305
2.757-3.937	±0.016	71-100	±0.406
3.938-5.096	±0.020	101-150	±0.508
5.097-7.874	±0.024	151-200	±0.610
7.875-9.843	±0.032	201-250	±0.813

ANGULAR TOLERANCE ± 2°

PROPRIETARY AND CONFIDENTIAL

THIS DRAWING IS PROTECTED BY COPYRIGHT AND CONTAINS INFORMATION PROPRIETARY TO THE CARY COMPANY. ANY REPRODUCTION, DISCLOSURE, OR USE OF ITS CONTENTS OR ANY PART THEREOF IS EXPRESSLY PROHIBITED EXCEPT AS OTHERWISE MAY AGREE IN WRITING

The
CARY COMPANY
 Est. 1895



DISTRIBUTION CODE

D

DRAWING NAME

24-400 CRC ASSM
 RECOMMENDED NECK FINISH

DRAWING NUMBER

CQA - 10156

DRAWN BY.

BDG

1/19/2016

MATERIAL

ENG APPR.

BDG

6/23/2017

MODEL NUMBER:

QA APPR.

REL

7/5/2017

SCALE

1:1

SHEET SIZE

8.5 X 11

SHEET

3 of 3

REV/N/P

01.AE