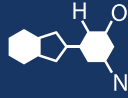


IF YOU...



MIX IT. FILL IT. PACK IT. SHIP IT.

WE HAVE A PRODUCT FOR YOU

Part #: 68WCF7

Adhesive Foam Tape

2" x 50' Adhesive Foam Tape, EPDM/Neoprene/SBR
Closed Cell, 1/8" Thick



The
CARYCOMPANY
Est. 1895

1195 W. Fullerton Ave. | Addison, IL 60101 | T: 630.629.6600 | F: 630.629.3690 |

Neoprene / EPDM / SBR Closed Cell Foam Tape

TECHNICAL DATA

	P811	1"	25'
ADHESION PROPERTIES	TEST	TYPICAL PERFORMANCE	TEST METHOD
High-tack pressure sensitive rubber based adhesive. One sided with release liner.	Adhesion to Steel @ 72°F		
	Steel immediate	7 lbs/inch width or foam tear	PSTC-1
	Steel after 24 hours	8 lbs/inch width or foam tear	PSTC-1
	Adhesion to Steel, 20 minute dwell	10 lbs/in width minimum	PSTC-1
	Static Shear @ 72°F 1 x 1 x 500 grams	1000 hours minimum	PSTC-7
	Static Shear @ 72°F 1 x 1 x 1000 grams	200 hours minimum	PSTC-7
	Shelf Life	1 year stored at room temperature	

PHYSICAL PROPERTIES	P8100 TAPE (MEDIUM DENSITY)	TEST METHOD	UNIT OF MEASURE	RESULT
	Density (PCF)	ASTM D1056	PCF	4-8
			kg/cm3	.064-.128
	ASTM-D-1056-67 Grade #	--	--	SCE 42
	ASTM-D-1056 07	--	--	2C2
	Service Temperature	--	F	-40F to +250F
	Water Absorption (Max)	ASTM D1056	%	5
	Tensile Strength (Min)	ASTM D412 (DIE A)	PSI	75
			kPa	517
	Elongation (Min)	ASTM D412 (DIE A)	%	150
	Compression Deflection 25%	ASTM D1056	psi	5 - 9
	Compression Set (Max)	ASTM D1056	%	25
	Flammability (UL 94 HF1, FMVSS302)	UL E208679	Pass/Fail	Pass
	UL 50, UL 50E, UL 157, UL 508	UL JMLU2, MH10200	Pass/Fail	Pass
	Durometer	ASTM D1056	Shore 00	30-50

Neoprene / EPDM / SBR Closed Cell Foam Tape

*For temperature resistance lower and or higher than the above figures, please contact customer service.
Under certain conditions, values greater than -40/+250 are possible.

Application Notes

Ensure bonding surfaces are well unified, clean, dry and free of dirt and oils. Apply firm and even pressure to improve adhesive-to-surface contact. Allow proper temperature and time to enhance bond strength as adhesive flows onto the surface.

The
CARYCOMPANY
Est. 1895