

IF YOU...

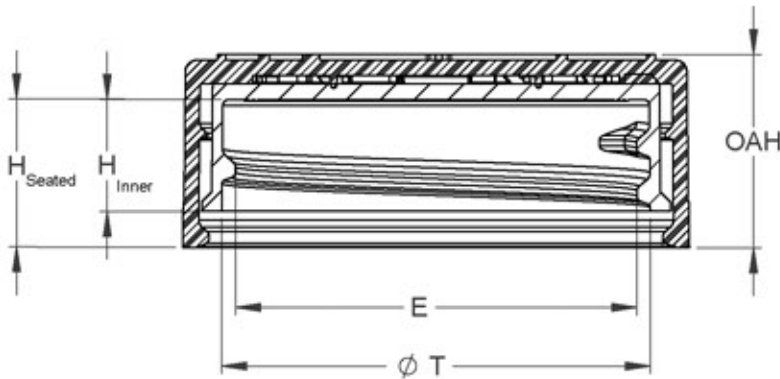
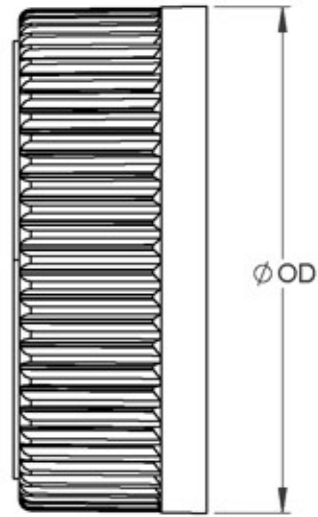


MIX IT. FILL IT. PACK IT. SHIP IT.

WE HAVE A PRODUCT FOR YOU



Part #	68WCR4
Neck Width	38mm
Neck Finish	38-400
Cap Liner	F-217 [®] 3-Ply Co-Extruded Foam Liner
Feature	Pictorial
Color	Black
Material	PP
Case Pack	1,500 ea.
Pallet Pack	52,500 ea. (35 Cases)
Case Weight	26 lbs.
FDA Approved	Yes
Industries	Automotive, Household Chemicals, Nutraceuticals, Pharmaceutical



SECTION A-A
SCALE 3 : 2

.167 PITCH - 6 THREADS PER INCH
380° FULL DEPTH THREAD

REFERENCE	TOLERANCE	DIMENSION	UNITS
E	± 0.010 [0.25]	1.396 [35.46]	in [mm]
T	± 0.010 [0.25]	1.488 [37.80]	in [mm]
H (Seated)	REFERENCE	0.521 [13.23]	in [mm]
H (Inner)	± 0.008 [0.20]	0.388 [9.86]	in [mm]
OD	± 0.013 [0.33]	1.760 [44.70]	in [mm]
OAH	± 0.011 [0.28]	0.671 [17.04]	in [mm]
PART WEIGHT	± 0.7	7.1	g

STATIC TORQUE RECOMMENDATION
17-26 in-lbs
THIS REQUIREMENT MAY VARY DEPENDING
UPON BOTTLE MATERIAL, NECK FINISH, AND
CAPPING EQUIPMENT

DRAWING TYPE : CUSTOMER

REPLACES DRAWINGS:
C-8019

DIMENSIONS ENCLOSED IN ()
INDICATE REFERENCE
DIMENSIONS AND NO TOLERANCE
LIMITS ARE ESTABLISHED

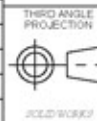
TOLERANCES UNLESS OTHERWISE SPECIFIED

DIMENSION (inches)	TOLERANCE	DIMENSION (mm)	TOLERANCE
0-0.787	± 0.006	0-20	± 0.152
0.788-1.181	± 0.008	21-30	± 0.203
1.182-2.756	± 0.012	31-70	± 0.305
2.757-3.937	± 0.016	71-100	± 0.406
3.938-5.096	± 0.020	101-150	± 0.508
5.097-7.874	± 0.024	151-200	± 0.610
7.875-9.843	± 0.032	201-250	± 0.813

ANGULAR TOLERANCE $\pm 2^\circ$

PROPRIETARY AND CONFIDENTIAL

The
CARY COMPANY
Est. 1895



DISTRIBUTION
CODE
D

DRAWING NAME
**38-400 CRC PDT ASSM
PICTO**

DRAWING NUMBER

DRAWN BY: BDG 4/29/2016

MATERIAL
POLYPROPYLENE

ENG APPR: BDG 2/1/2017

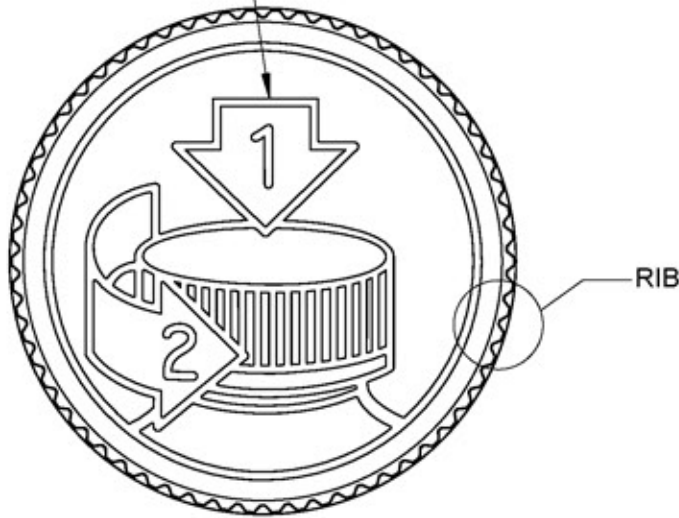
MODEL NUMBER:
PM-10161 38-400 CRC ASSM

QA APPR: ACP 02/01/2017

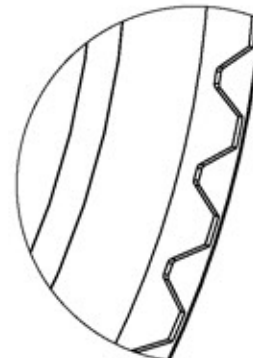
SCALE	SHEET SIZE	SHEET	REV/NP
1:1	11in*8.5in	1 of 3	04 AD

DATE	REV	N/P	DESCRIPTION	ENG	DRWN
01/30/17	04	AD	DRAWING FORMAT UPDATED. ADDED H(SEATED) AS REFERENCE DIMENSION	BDG	BDG

INSTRUCTIONS EMBOSSES



ALTERNATE PICTO
INSTRUCTIONS
(SIDE GATED MOLD)



DETAIL RIB
SCALE 6 : 1

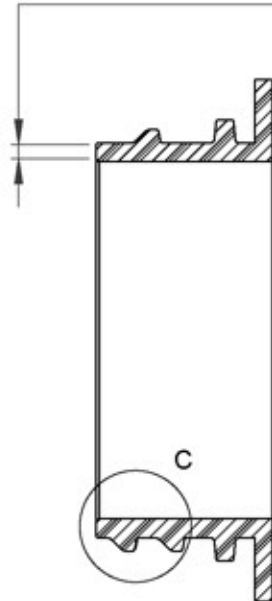
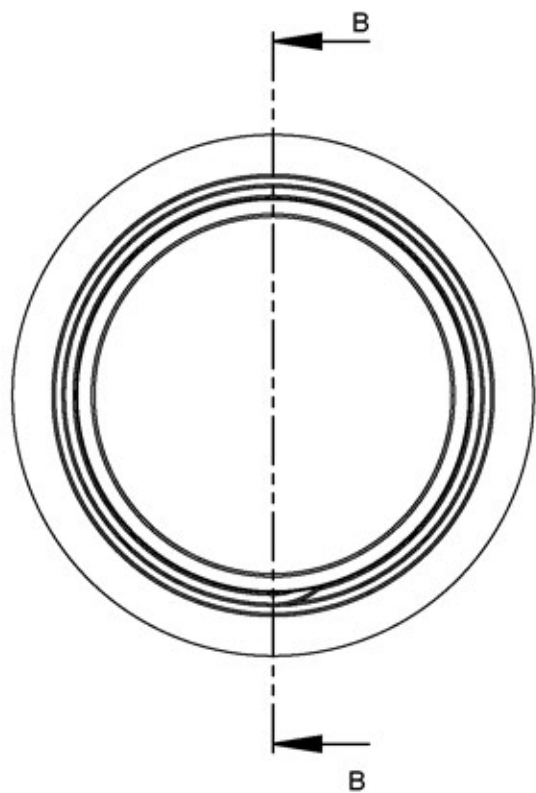
(62) EQUISPACED RIBS

DRAWING TYPE: CUSTOMER			
REFERENCES:		DIMENSIONS ENCLOSED IN () INDICATE REFERENCE DIMENSIONS AND NO TOLERANCE LIMITS ARE ESTABLISHED	
TOLERANCES UNLESS OTHERWISE SPECIFIED			
DIMENSION (inches)	TOLERANCE	DIMENSION (mm)	TOLERANCE
0-0.787	±0.006	0-20	±0.152
0.788-1.181	±0.008	21-30	±0.203
1.182-2.756	±0.012	31-70	±0.305
2.757-3.937	±0.016	71-100	±0.406
3.938-5.096	±0.020	101-150	±0.508
5.097-7.874	±0.024	151-200	±0.610
7.875-9.843	±0.032	201-250	±0.813
ANGULAR TOLERANCE ± 2°			
PROPRIETARY AND CONFIDENTIAL			

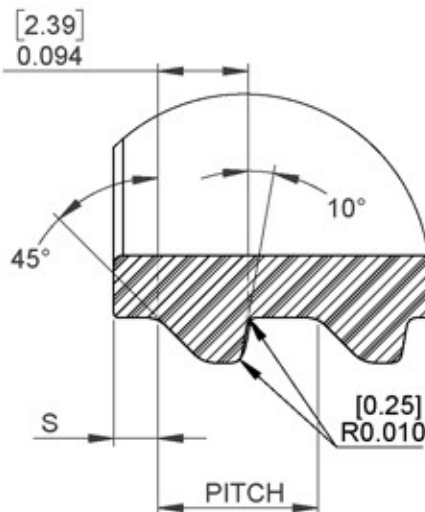
The
CARY COMPANY
— Est. 1895

THIRD ANGLE PROJECTION 	DISTRIBUTION CODE D	DRAWING NAME 38-400 CRC PDT ASSM PICTO			
		DRAWING NUMBER CQA - 10023			
DRAWN BY: BDG	4/29/2016	MATERIAL POLYPROPYLENE			
		MODEL NUMBER PM-10161 38-400 CRC ASSM			
ENG APPR. BDG	2/1/2017	SCALE 1:1	SHEET SIZE 8.5 X 11	SHEET 2 of 3	REV/NP 04 AD

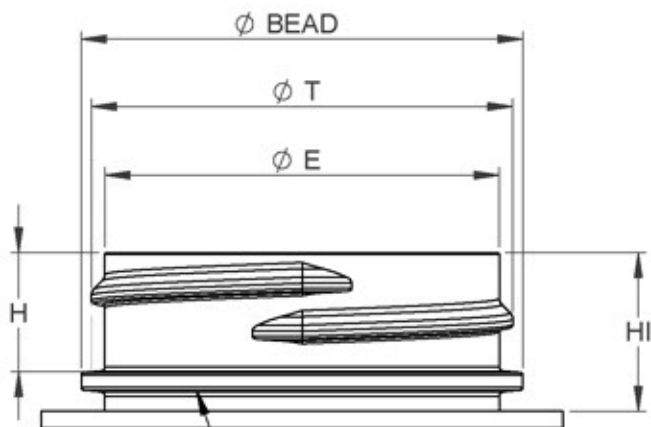
[1.27]
0.050 MINIMUM FLAT
RECOMMENDED FOR
PROPER INDUCTION SEAL



SECTION B-B
SCALE 3 : 2



DETAIL C
SCALE 5 : 1
THREAD DETAIL



BEAD IS NOT REQUIRED
FOR CHILD RESISTANT
CLOSURE FUNCTION

REFERENCE	TOLERANCE	UNITS	DIMENSIONS
E	±0.012 [0.30]	in [mm]	1.370 [34.80]
T	±0.012 [0.30]	in [mm]	1.464 [37.19]
I	MINIMUM	in [mm]	1.225 [31.11]
S	±0.015 [0.38]	in [mm]	0.046 [1.17]
H	MINIMUM	in [mm]	0.403 [10.24]
H1	MINIMUM	in [mm]	.550 [13.97]
BEAD	MAXIMUM	in [mm]	1.545 [39.24]
TPI			6
PITCH		in	0.167 [4.24]

DRAWING TYPE : CUSTOMER

DIMENSIONS ENCLOSED IN () INDICATE REFERENCE DIMENSIONS AND NO TOLERANCE LIMITS ARE ESTABLISHED

TOLERANCES UNLESS OTHERWISE SPECIFIED

DIMENSION (inches)	TOLERANCE	DIMENSION (mm)	TOLERANCE
0-0.787	±0.006	0-20	±0.152
0.788-1.181	±0.008	21-30	±0.203
1.182-2.756	±0.012	31-70	±0.305
2.757-3.937	±0.016	71-100	±0.406
3.938-5.096	±0.020	101-150	±0.508
5.097-7.874	±0.024	151-200	±0.610
7.875-9.843	±0.032	201-250	±0.813

ANGULAR TOLERANCE ± 2°

PROPRIETARY AND CONFIDENTIAL

The
CARY COMPANY
— Est. 1895

THIRD ANGLE PROJECTION

DISTRIBUTION CODE
D

DRAWING NAME
**38-400 CRC PDT ASSM
RECOMMENDED NECK FINISH**

DRAWING NUMBER

MATERIAL

MODEL NUMBER:

DRAWN BY: BDG 4/29/2016

ENG APPR. BDG 2/11/2017

QA APPR. ACP 02/01/2017

SCALE	SHEET SIZE	SHEET	REV/NP
1:1	NOB X 11	3 of 3	04 AD