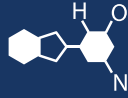


IF YOU...



MIX IT. FILL IT. PACK IT. SHIP IT.

WE HAVE A **PRODUCT** FOR YOU

Part #: 68WCT2

Adhesive Foam Tape

2" x 25' Adhesive Foam Tape, EPDM/Neoprene/SBR
Closed Cell, 1" Thick



The
CARYCOMPANY
Est. 1895

1195 W. Fullerton Ave. | Addison, IL 60101 | T: 630.629.6600 | F: 630.629.3690 |

Neoprene / EPDM / SBR Closed Cell Foam Tape

TECHNICAL DATA

| ADHESION PROPERTIES | TEST | TYPICAL PERFORMANCE | TEST METHOD |
|---|--|-----------------------------------|-------------|
| High-tack pressure sensitive rubber based adhesive. One sided with release liner. | Adhesion to Steel @ 72°F | | |
| | Steel immediate | 7 lbs/inch width or foam tear | PSTC-1 |
| | Steel after 24 hours | 8 lbs/inch width or foam tear | PSTC-1 |
| | Adhesion to Steel, 20 minute dwell | 10 lbs/in width minimum | PSTC-1 |
| | Static Shear @ 72°F 1 x 1 x 500 grams | 1000 hours minimum | PSTC-7 |
| | Static Shear @ 72°F 1 x 1 x 1000 grams | 200 hours minimum | PSTC-7 |
| | Shelf Life | 1 year stored at room temperature | |

| PHYSICAL PROPERTIES | P8100 TAPE (MEDIUM DENSITY) | TEST METHOD | UNIT OF MEASURE | RESULT |
|---------------------|------------------------------------|-------------------|--------------------|---------------|
| | Density (PCF) | ASTM D1056 | PCF | 4-8 |
| | | | kg/cm ³ | .064-.128 |
| | ASTM-D-1056-67 Grade # | -- | -- | SCE 42 |
| | ASTM-D-1056 07 | -- | -- | 2C2 |
| | Service Temperature | -- | F | -40F to +250F |
| | Water Absorption (Max) | ASTM D1056 | % | 5 |
| | Tensile Strength (Min) | ASTM D412 (DIE A) | PSI | 75 |
| | | | kPa | 517 |
| | Elongation (Min) | ASTM D412 (DIE A) | % | 150 |
| | Compression Deflection 25% | ASTM D1056 | psi | 5 - 9 |
| | Compression Set (Max) | ASTM D1056 | % | 25 |
| | Flammability (UL 94 HF1, FMVSS302) | UL E208679 | Pass/Fail | Pass |
| | UL 50, UL 50E, UL 157, UL 508 | UL JMLU2, MH10200 | Pass/Fail | Pass |
| | Durometer | ASTM D1056 | Shore 00 | 30-50 |

The
CARY COMPANY
 Est. 1895

Neoprene / EPDM / SBR Closed Cell Foam Tape

*For temperature resistance lower and or higher than the above figures, please contact customer service.
Under certain conditions, values greater than -40/+250 are possible.

Application Notes

Ensure bonding surfaces are well unified, clean, dry and free of dirt and oils. Apply firm and even pressure to improve adhesive-to-surface contact. Allow proper temperature and time to enhance bond strength as adhesive flows onto the surface.

