

# IF YOU...



MIX IT. FILL IT. PACK IT. SHIP IT.

# WE HAVE A **PRODUCT** FOR YOU

Part #: 68WCW0

---

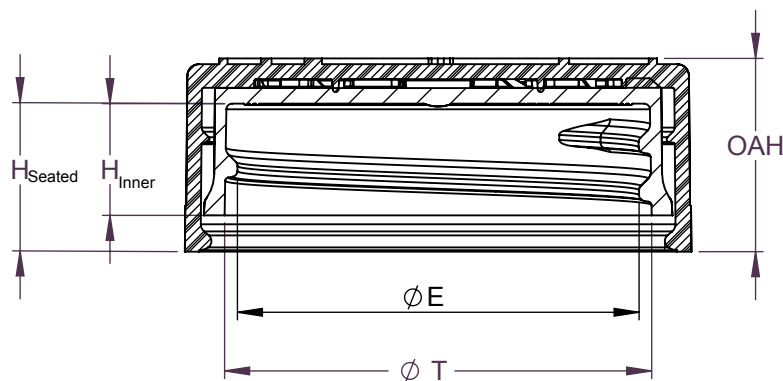
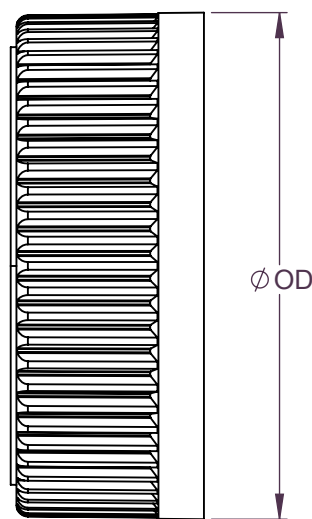
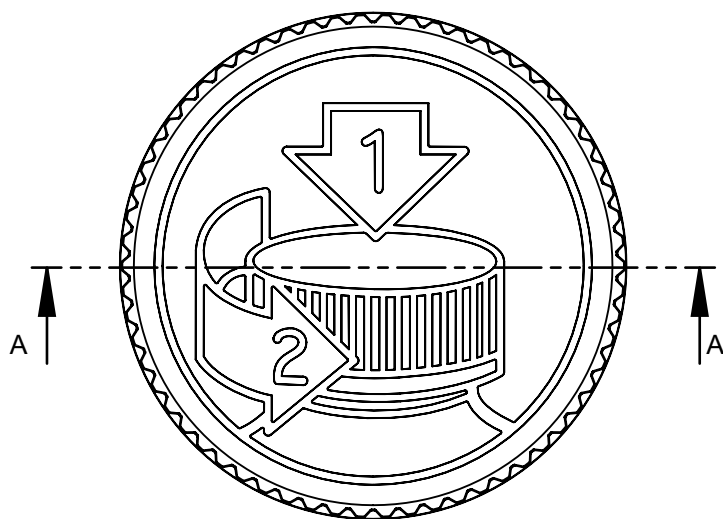
---



---

The  
**CARY**COMPANY  
Est. 1895

1195 W. Fullerton Ave. | Addison, IL 60101 | T: 630.629.6600 | F: 630.629.3690 |



SECTION A-A  
SCALE 3 : 2

.167 PITCH - 6 THREADS PER INCH  
380° FULL DEPTH THREAD

REFERENCE	TOLERANCE	DIMENSION	UNITS
E	±0.010 [0.25]	1.396 [35.46]	in [mm]
T	±0.010 [0.25]	1.488 [37.80]	in [mm]
H (Seated)	REFERENCE	0.521 [13.23]	in [mm]
H (Inner)	±0.008 [0.20]	0.388 [9.86]	in [mm]
OD	±0.013 [0.33]	1.760 [44.70]	in [mm]
OAH	±0.011 [0.28]	0.671 [17.04]	in [mm]
PART WEIGHT	± 0.7	7.1	g

STATIC TORQUE RECOMMENDATION  
17-26 in-lbs  
THIS REQUIREMENT MAY VARY DEPENDING  
UPON BOTTLE MATERIAL, NECK FINISH, AND  
CAPPING EQUIPMENT

DRAWING TYPE : CUSTOMER

REPLACES DRAWINGS:  
C-8019

DIMENSIONS ENCLOSED IN ( )  
INDICATE REFERENCE  
DIMENSIONS AND NO TOLERANCE  
LIMITS ARE ESTABLISHED

TOLERANCES UNLESS OTHERWISE SPECIFIED

DIMENSION (inches)	TOLERANCE	DIMENSION (mm)	TOLERANCE
0-0.787	±0.006	0-20	±0.152
0.788-1.181	±0.008	21-30	±0.203
1.182-2.756	±0.012	31-70	±0.305
2.757-3.937	±0.016	71-100	±0.406
3.938-5.096	±0.020	101-150	±0.508
5.097-7.874	±0.024	151-200	±0.610
7.875-9.843	±0.032	201-250	±0.813

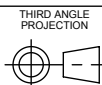
ANGULAR TOLERANCE ± 2°

THE CLOSURE DIMENSIONS  
DEPICTED ARE THOSE WHICH HAVE GENERALLY BEEN  
FOUND TO BE FUNCTIONAL BASED ON INDUSTRY  
EXPERIENCE BECAUSE OF VARIABILITY IN GLASS AND  
PLASTIC CONTAINER FINISHES, EACH CLOSURE/FINISH  
SYSTEM SHOULD BE INDIVIDUALLY EVALUATED AND  
TESTED TO ENSURE IT MEETS APPLICABLE  
PERFORMANCE CRITERIA. SEE QUALITY ASSURANCE  
SPECIFICATIONS FOR ADDITIONAL INFORMATION.

THE CARY COMPANY RESERVES THE RIGHT TO REVISE  
ANY OR ALL SPECIFICATIONS AND REQUIREMENTS.

P: 630-629-6600 | F: 630-629-3690  
1195 W. Fullerton Ave. Addison, IL 60101  
www.thecarycompany.com

The  
**CARY COMPANY**  
Est. 1895



SOLIDWORKS

DISTRIBUTION  
CODE  
**D**

DRAWING NAME  
**38-400 CRC ASSM  
PICTO**

DRAWING NUMBER  
**CQA - 10023**

DRAWN BY. BDG 4/29/2016

MATERIAL  
**POLYPROPYLENE**

ENG APPR. BDG 2/1/2017

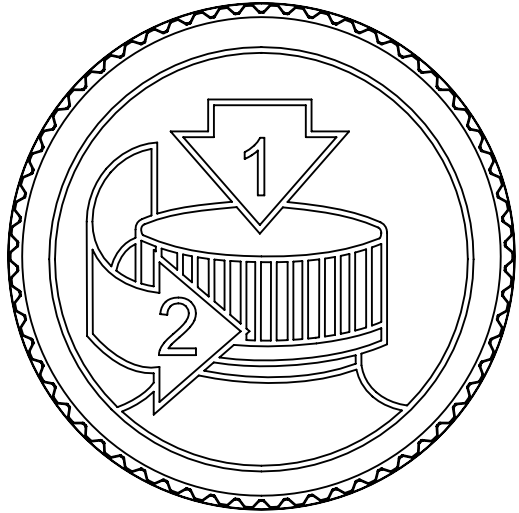
MODEL NUMBER  
**PM-10161 38-400 CRC ASSM**

QA APPR. ACP 2/1/2017

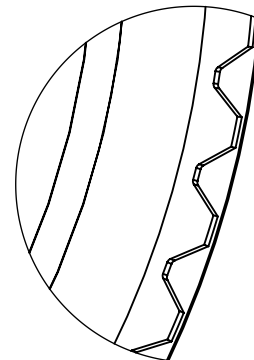
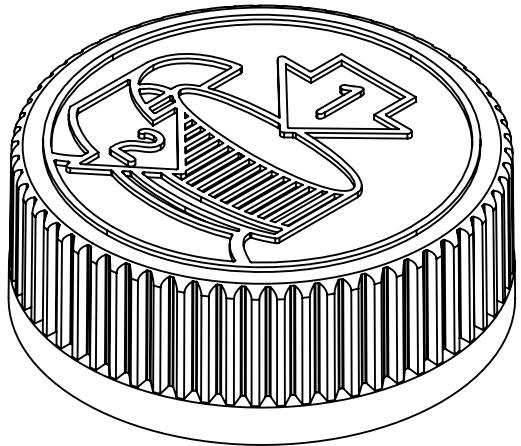
SCALE 1:1	SHEET SIZE 11in*8.5in	SHEET 1 of 3	REV.NP 04.AD
--------------	--------------------------	-----------------	-----------------

DATE	REV	N/P	DESCRIPTION	ENG	DRWN
01/30/17	04	AD	DRAWING FORMAT UPDATED. ADDED H(SEATED) AS REFERENCE DIMENSION	BDG	BDG

INSTRUCTIONS EMBOSSES



ALTERNATE PICTO  
INSTRUCTIONS  
(SIDE GATED MOLD)



DETAIL RIB  
SCALE 6 : 1

(62) EQUISPACED RIBS

DRAWING TYPE : CUSTOMER

REFERENCES:

DIMENSIONS ENCLOSED IN ( ) INDICATE REFERENCE DIMENSIONS AND NO TOLERANCE LIMITS ARE ESTABLISHED

TOLERANCES UNLESS OTHERWISE SPECIFIED

DIMENSION (inches)	TOLERANCE	DIMENSION (mm)	TOLERANCE
0-0.787	±0.006	0-20	±0.152
0.788-1.181	±0.008	21-30	±0.203
1.182-2.756	±0.012	31-70	±0.305
2.757-3.937	±0.016	71-100	±0.406
3.938-5.096	±0.020	101-150	±0.508
5.097-7.874	±0.024	151-200	±0.610
7.875-9.843	±0.032	201-250	±0.813

ANGULAR TOLERANCE ± 2°

The **CARY COMPANY**  
Est. 1895

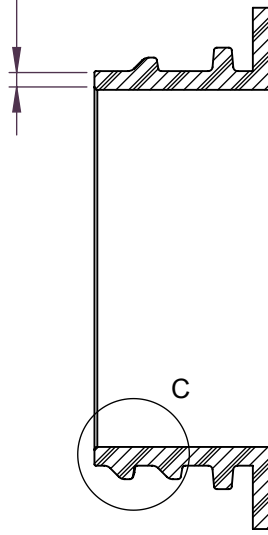
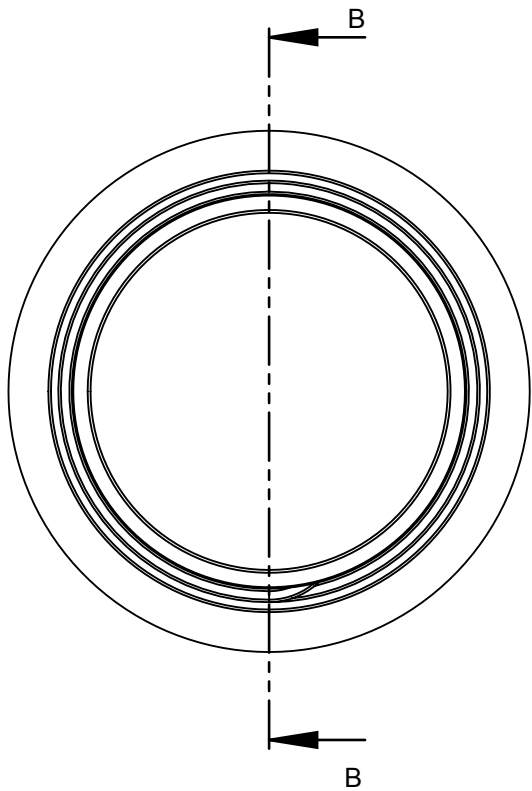
THE CLOSURE DIMENSIONS DEPICTED ARE THOSE WHICH HAVE GENERALLY BEEN FOUND TO BE FUNCTIONAL BASED ON INDUSTRY EXPERIENCE BECAUSE OF VARIABILITY IN GLASS AND PLASTIC CONTAINER FINISHES. EACH CLOSURE/FINISH SYSTEM SHOULD BE INDIVIDUALLY EVALUATED AND TESTED TO ENSURE IT MEETS APPLICABLE PERFORMANCE CRITERIA. SEE QUALITY ASSURANCE SPECIFICATIONS FOR ADDITIONAL INFORMATION.

THE CARY COMPANY RESERVES THE RIGHT TO REVISE ANY OR ALL SPECIFICATIONS AND REQUIREMENTS.

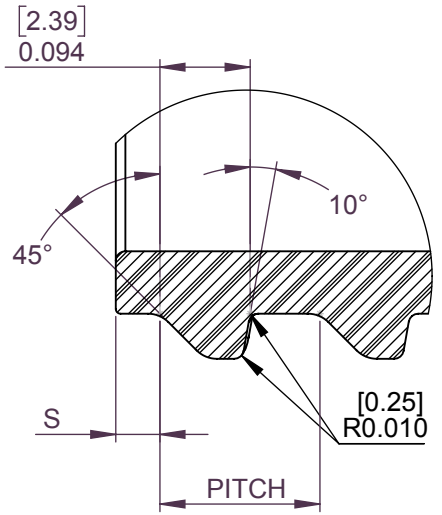
THIRD ANGLE PROJECTION	DISTRIBUTION CODE <b>D</b>	DRAWING NAME <b>38-400 CRC ASSM PICTO</b>			
		DRAWING NUMBER <b>CQA - 10023</b>			
DRAWN BY.	BDG	4/29/2016	MATERIAL <b>POLYPROPYLENE</b>		
ENG APPR.	BDG	2/1/2017	MODEL NUMBER <b>PM-10161 38-400 CRC ASSM</b>		
QA APPR.	ACP	2/1/2017	SCALE 1:1	SHEET SIZE 8.5 X 11	SHEET 2 of 3
					REV.NP <b>04.AD</b>

P: 630-629-6600 | F: 630-629-3690  
1195 W. Fullerton Ave. Addison, IL 60101  
www.thecarycompany.com

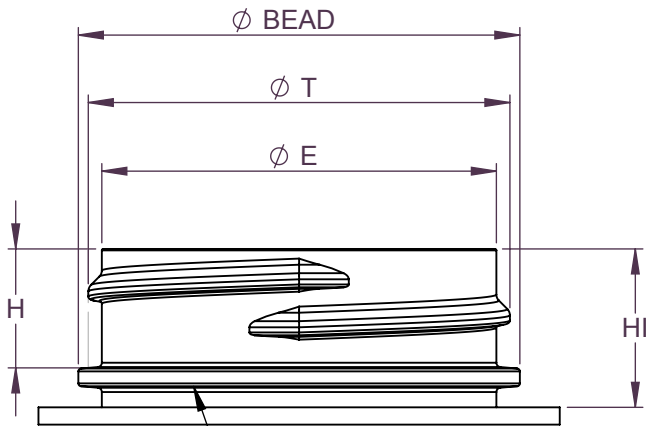
[1.27]  
0.050 MINIMUM FLAT  
RECOMMENDED FOR  
PROPER INDUCTION SEAL



SECTION B-B  
SCALE 3 : 2



DETAIL C  
SCALE 5 : 1  
THREAD DETAIL



BEAD IS NOT REQUIRED  
FOR CHILD RESISTANT  
CLOSURE FUNCTION

REFERENCE	TOLERANCE	UNITS	DIMENSIONS
E	±0.012 [0.30]	in [mm]	1.370 [34.80]
T	±0.012 [0.30]	in [mm]	1.464 [37.19]
I	MINIMUM	in [mm]	1.225 [31.11]
S	±0.015 [0.38]	in [mm]	0.046 [1.17]
H	MINIMUM	in [mm]	0.403 [10.24]
H1	MINIMUM	in [mm]	.550 [13.97]
BEAD	MAXIMUM	in [mm]	1.545 [39.24]
TPI			6
PITCH		in	0.167 [4.24]

DRAWING TYPE : CUSTOMER

DIMENSIONS ENCLOSED IN ( ) INDICATE REFERENCE DIMENSIONS AND NO TOLERANCE LIMITS ARE ESTABLISHED

TOLERANCES UNLESS OTHERWISE SPECIFIED

DIMENSION (inches)	TOLERANCE	DIMENSION (mm)	TOLERANCE
0-0.787	±0.006	0-20	±0.152
0.788-1.181	±0.008	21-30	±0.203
1.182-2.756	±0.012	31-70	±0.305
2.757-3.937	±0.016	71-100	±0.406
3.938-5.096	±0.020	101-150	±0.508
5.097-7.874	±0.024	151-200	±0.610
7.875-9.843	±0.032	201-250	±0.813

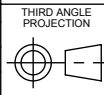
ANGULAR TOLERANCE ± 2°

The  
**CARY COMPANY**  
Est. 1895

THE CLOSURE DIMENSIONS DEPICTED ARE THOSE WHICH HAVE GENERALLY BEEN FOUND TO BE FUNCTIONAL BASED ON INDUSTRY EXPERIENCE BECAUSE OF VARIABILITY IN GLASS AND PLASTIC CONTAINER FINISHES. EACH CLOSURE/FINISH SYSTEM SHOULD BE INDIVIDUALLY EVALUATED AND TESTED TO ENSURE IT MEETS APPLICABLE PERFORMANCE CRITERIA. SEE QUALITY ASSURANCE SPECIFICATIONS FOR ADDITIONAL INFORMATION.

THE CARY COMPANY RESERVES THE RIGHT TO REVISE ANY OR ALL SPECIFICATIONS AND REQUIREMENTS.

P: 630-629-6600 | F: 630-629-3690  
1195 W. Fullerton Ave. Addison, IL 60101  
www.thecarycompany.com



SOLIDWORKS

DISTRIBUTION CODE

D

DRAWING NAME

38-400 CRC ASSM  
RECOMMENDED NECK FINISH

DRAWING NUMBER

CQA - 10023

DRAWN BY: BDG

DATE: 4/29/2016

MATERIAL

ENG APPR: BDG

DATE: 2/1/2017

MODEL NUMBER:

QA APPR: ACP

DATE: 2/1/2017

SCALE

1:1

SHEET SIZE

11 X 8.5

SHEET

3 of 3

REV/N/P

04.AD