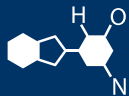


# IF YOU...



MIX IT. FILL IT. PACK IT. SHIP IT.

# WE HAVE A **PRODUCT** FOR YOU

Part #68WDKE

Tamper Evident Beverage Caps

**38mm Drop-Lok® Black Ribbed Plastic Cap w/EVA Liner**



The  
**CARY**COMPANY  
Est. 1895

1195 W. Fullerton Ave. | Addison, IL 60101 | T: 630.629.6600 | F: 630.629.3690 | [TheCaryCompany.com](http://TheCaryCompany.com)

ZONE	REV.	DESCRIPTION	DATE	APPROVED
	A	CHANGED NAME IN TITLE BLOCK TO HOFFER	8/27/98	SJL
	A1	REDRAWN IN CAD	3/7/08	WEI
	B	REMOVED 1769 GLASS BOTTLE FINISH	5/19/08	WEI
	C	ADDED NON-VENTED CLOSURE NOTE	3/16/12	WEI

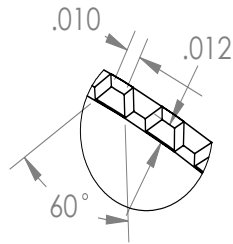
NOTES:  
8 THREADS/INCH

DEVIATIONS FROM REFERENCE DIMENSIONS WHICH WILL NOT AFFECT FUNCTION ARE ACCEPTABLE.

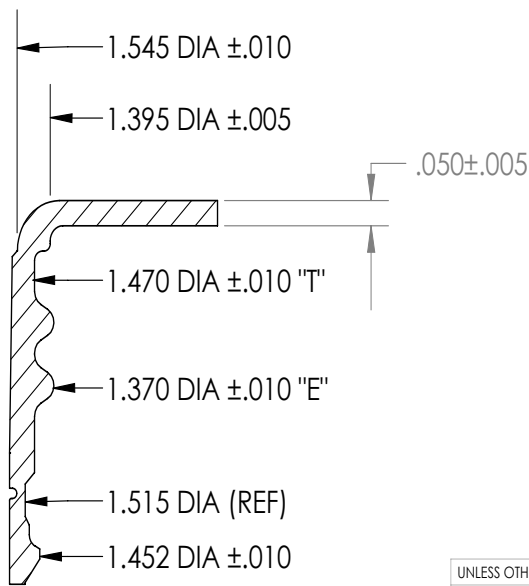
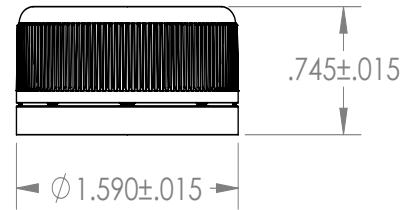
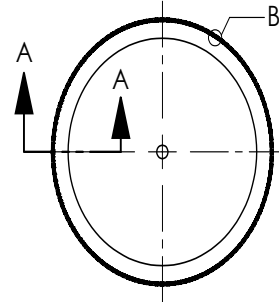
HEIGHT DIMENSIONS SUBJECT TO VARIATION DUE TO "CRUSHING" DURING PART EJECTION.

ADD .010" FOR TOP EMBOSS.

THE DROP-LOK® CLOSURE IS NOT A VENTED CLOSURE AND SHOULD NOT BE USED ON APPLICATIONS THAT PRODUCE INTERNAL PRESSURE IN THE BOTTLE DUE TO CARBONATION, FERMENTATION, ETC.



120 KNURLS  
DETAIL B  
SCALE 10 : 1



SECTION A-A  
SCALE 3 : 1

GLASS FINISH: 1768 (B)

PLASTIC FINISH: 1763 & 1787

UNLESS OTHERWISE SPECIFIED:		NAME	DATE
DIMENSIONS ARE IN INCHES		DRAWN	WEI 3/7/08
TOLERANCES:		DESIGN	APPROVED
FRACTIONAL ±			
ANGULAR: ± 1°			
TWO PLACE DECIMAL ± .010			
THREE PLACE DECIMAL ± .005			
INTERPRET GEOMETRIC TOLERANCING PER:		COMMENTS:	
MATERIAL		LINER:	
POLYPROPYLENE		SS222 1.480 DIA .030 ± .005 THICK	
FINISH		EVA A-300 1.480 DIA .028 ± .003 THICK	
DO NOT SCALE DRAWING			

TITLE:

**38 mm DROP-LOK®**

SIZE	DWG. NO.	REV
<b>A</b>	<b>CA 38-18</b>	<b>C</b>

SCALE: 1:1 Shrink: SHEET 1 OF 1

5

4

3

2

1