

IF YOU...

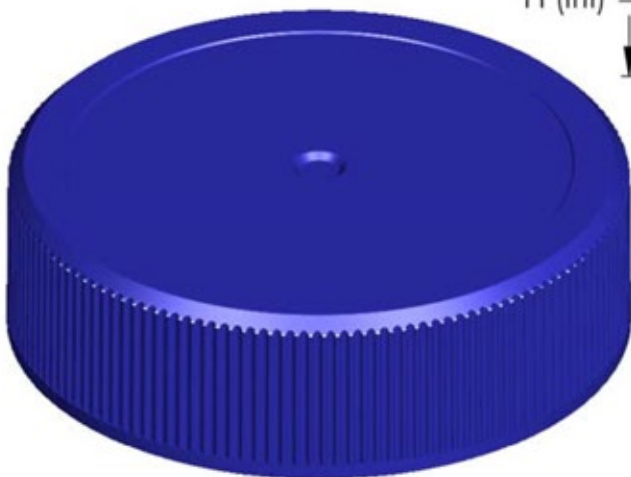
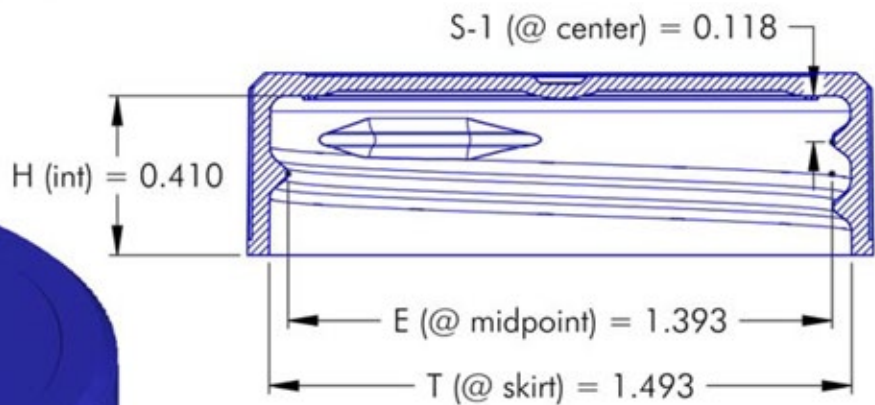
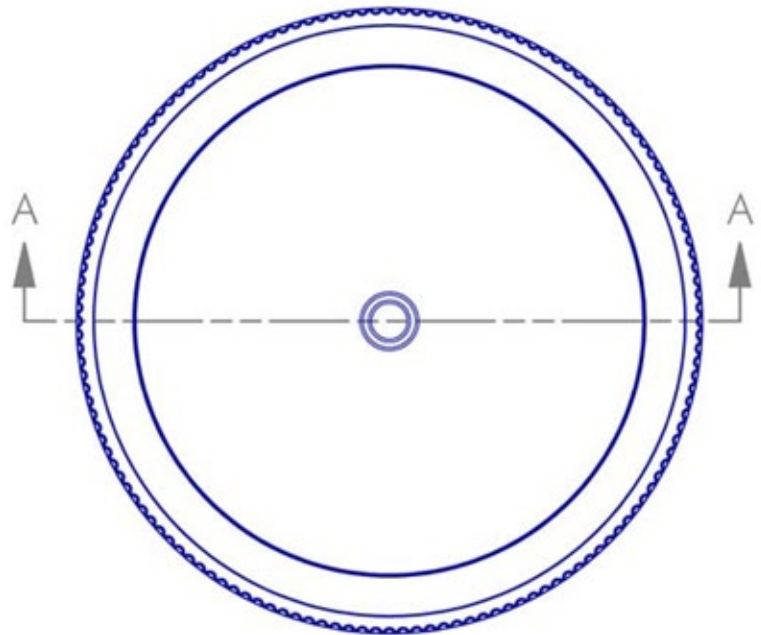
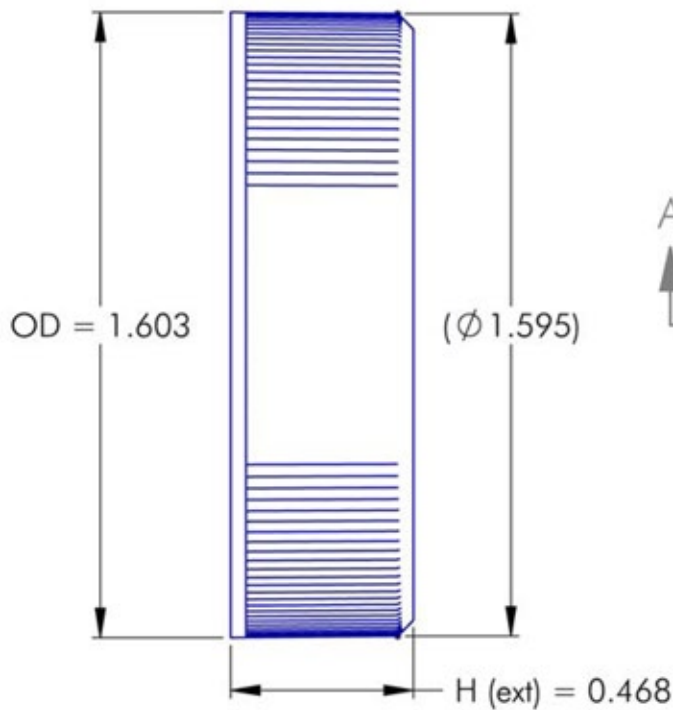


MIX IT. FILL IT. PACK IT. SHIP IT.

WE HAVE A PRODUCT FOR YOU

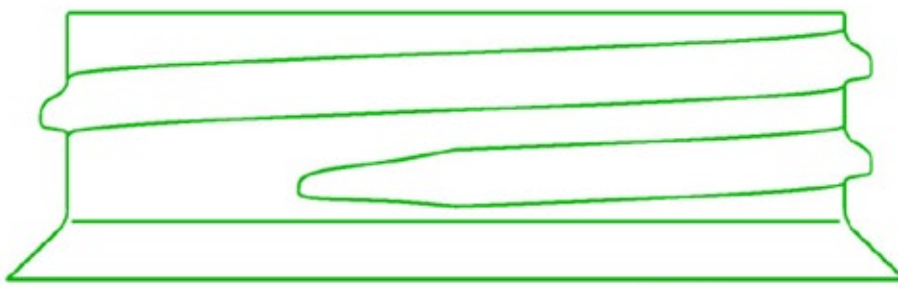


Part #	68WF39
Neck Width	38mm
Neck Finish	38-400
Cap Liner	FoilSeal™ .020" Pulp FS 3-19 Heat Induction Foil
Color	White
Material	PP
Case Pack	3,750 ea.
Pallet Pack	56,250 ea. (15 Cases)
Case Weight	33.316 lbs.
Case Dimensions	24 x 16" x 15"
Pallet Dimensions	48" x 40" x 50"
FDA Approved	Yes



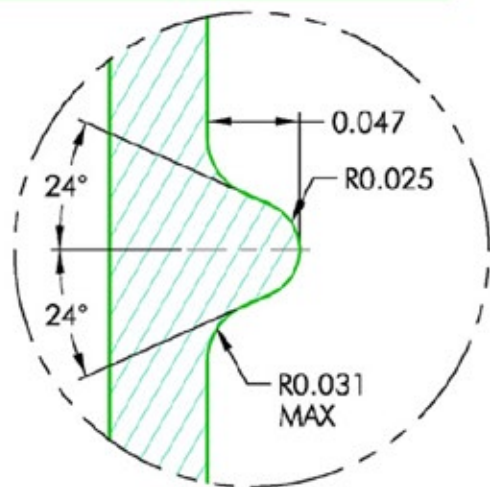
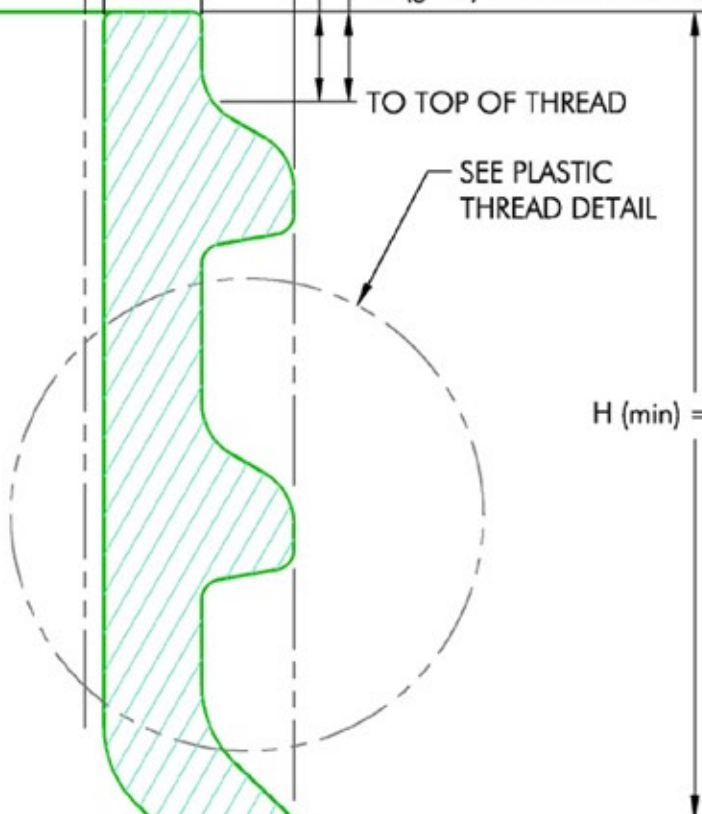
NOTES: (UNLESS OTHERWISE SPECIFIED)
 1. ALL DIMENSIONS ARE IN INCHES.
 2. TOLERANCE ON ALL DIMENSIONS IS ± 0.010 ".

#	00.00.00	-	--	PITCH (TPI): 6	# OF TURNS: 1-3/16	MATERIAL: POLYPROPYLENE
REV	DATE	DESCRIPTION	BY	DRAWING #:		SCALE: 2 : 1
				DESCRIPTION: FINE RIB / CHAMFERED TOP w/ MATTE FINISH		
				DRAWN BY: DMN	DATE: 09.06.06	APPROVED BY: LRE

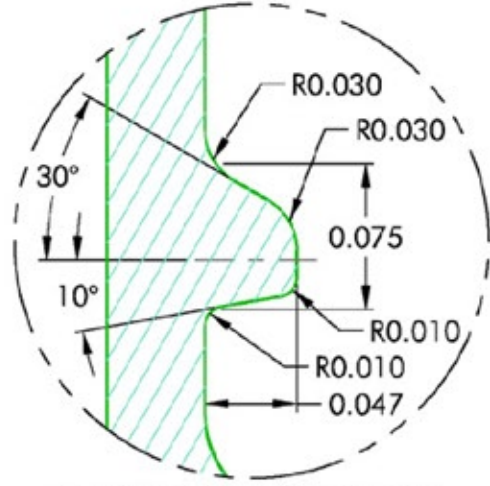


T (plastic) = 1.464
 T (glass) = 1.459
 E (plastic) = 1.370
 E (glass) = 1.365
 I (min) = 0.987

0.060 MIN. LAND FOR INDUCTION / CONDUCTION SEALING APPLICATIONS
 0.050 MIN. LAND FOR NON-INDUCTION / CONDUCTION SEALING APPLICATIONS
 S (plastic) = 0.046 ± 0.015
 S (glass) = 0.046 +0.016 / -0.015



GLASS THREAD DETAIL
 SCALE 10 : 1



PLASTIC THREAD DETAIL
 SCALE 10 : 1

MATERIAL	TOLERANCE
PP / PE	± 0.012
PET	± 0.006
GLASS	+0.017 / -0.018

NOTES: (UNLESS OTHERWISE SPECIFIED)
 1. ALL DIMENSIONS ARE IN INCHES.
 2. TOLERANCE ON ALL DIMENSIONS GIVEN BY CHART.

#	00.00.00		--
REV	DATE	DESCRIPTION	BY

PITCH (TPI): 6	# OF TURNS: 1-1/4	MATERIAL: PER CHART
DRAWING #:		
DESCRIPTION: FINISH FOR USE WITH PCI 38-400 CLOSURES		
FILE: 38-400-FINISH.dwg	SCALE: 10 : 1	
DRAWN BY: BEZ	DATE: 08.31.93	APPRVD BY: LRE
	REV: 0	BF