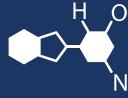


# IF YOU...



MIX IT. FILL IT. PACK IT. SHIP IT.

# WE HAVE A PRODUCT FOR YOU

Part #: 68WFXC

---

---



---

The  
**CARY**COMPANY  
Est. 1895

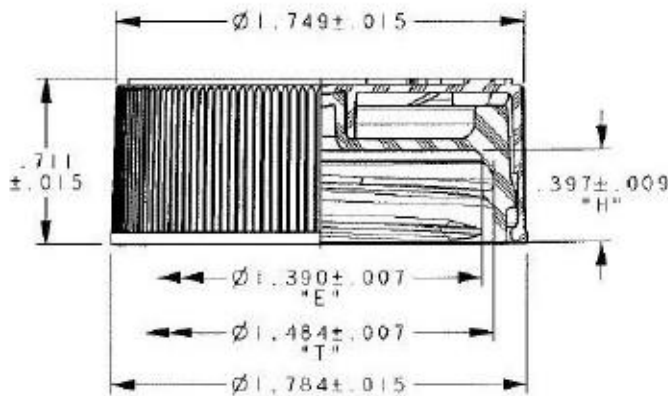
1195 W. Fullerton Ave. | Addison, IL 60101 | T: 630.629.6600 | F: 630.629.3690 |



KNURLS  
(.008 DEEP)

**NOTES:**

1. .040 LINER SHOWN
2. DIAMETERS TO BE TAKEN AS AVERAGE
3. THREAD PROFILE: MODIFIED BUTTRESS
4. REFERENCE QIM-500-A105 FOR NECK FINISH REQUIREMENTS
5. RECOMMENDED 48 HOUR REMOVAL TORQUE: 8-12 IN. LBS
6. MAT'L: POLYPRO



REV. L - 4/18/2018 - EPH  
#RCT170564

REFERENCE DIMENSIONS ARE NOT INSPECTED AND NO TOLERANCE APPLIED

INSPECTION DIMENSIONS ARE VERIFIED WITH TOLERANCE

THIS DRAWING IS NOT A CONTROLLED DOCUMENT IF PRINTED OR COPIED FROM THE APPROVED LOCATION

SIZE AND STYLE <b>CR38400FXUS</b>		DRAWING TYPE <b>CUSTOMER</b>			
DESCRIPTION 38mm CR4 CHILD-RESISTANT CLOSURE TEXT					
DRAWING NO. K7025			PROJECT NO.		
CREATED BY R.BUSH	CREATION DATE 5/11/88	DRAWING REVISION L	SHEET 1 of 1	SCALE 1.500	DRAWING SIZE A

2

1