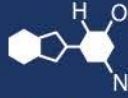


IF YOU...



MIX IT. FILL IT. PACK IT. SHIP IT.

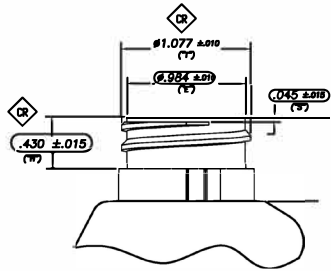
WE HAVE A **PRODUCT** FOR YOU

Part #: 68WTW3

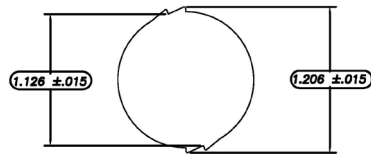


The
CARYCOMPANY
Est. 1895

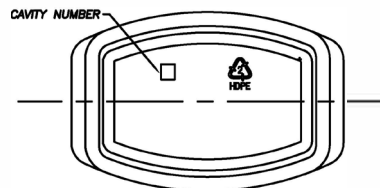
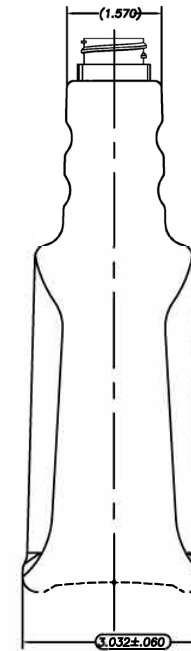
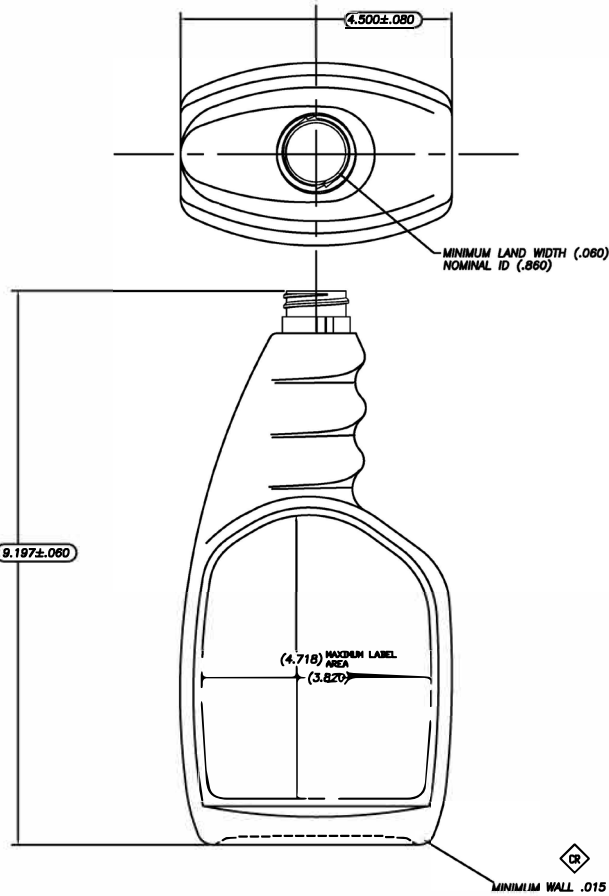
1195 W. Fullerton Ave. | Addison, IL 60101 | T: 630.629.6600 | F: 630.629.3690 |



28MM SPECIAL CALMAR FINISH



RATCHET DETAIL



1. DIMENSIONS OR NOTES MARKED WITH A DENOTE CRITICAL CHARACTERISTICS TO BE MONITORED DURING PRODUCTION.
2. DIMENSIONS OR NOTES MARKED WITH A DENOTE CHARACTERISTICS TO BE MONITORED DURING PRODUCTION QUALIFICATION ONLY.
3. ALL DIAMETER DIMENSIONS MARKED WITH OR SHALL BE DETERMINED BY AVERAGING THE MEASUREMENTS AT PARTING LINE AND 90 DEGREES FROM PARTING LINE.
4. REFERENCE ONLY DIMENSIONS CONTAINED INK .
5. MINIMUM CONTAINER WALL THICKNESS .015.
6. CONTAINER TIP LOAD REQUIREMENT TO BE N/A LBS. MINIMUM AT 1/4" DEFLECTION.
7. MATERIAL HDPE.
8. TARGET WEIGHT 550 ± 30 GRAMS.
9. OVERFLOW CAPACITY 34.98 FL. OZ. (1034.5 ± 15 CC'S)
10. MEASUREMENTS TAKEN 24 HOURS AFTER HOLDING.

| REV | DATE | BY | DATE | DESCRIPTION | PRODUCT DRAWING |
|-----|------------|-----|----------|---------------------------------------|---------------------|
| 1 | 2009-03-14 | ENH | 04/02/09 | PRELIMINARY - ARMED RATCHET DETAIL | |
| 2 | | ENH | 07/27/09 | ARMED SHEET & 28MM CALMAR BECK FINISH | TWLD 33 OZ. TRIGGER |
| 3 | | ENH | | | |
| 4 | | ENH | | | |
| 5 | | ENH | | | |
| 6 | | ENH | | | |
| 7 | | ENH | | | |
| 8 | | ENH | | | |
| 9 | | ENH | | | |
| 10 | | ENH | | | |

THE CARY COMPANY
 Est. 1895

SCALE 1:1 SHEET 8 OF 8 REV. 3