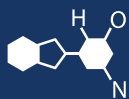


IF YOU...



MIX IT. FILL IT. PACK IT. SHIP IT.

WE HAVE A **PRODUCT** FOR YOU

Part #: 68WW34

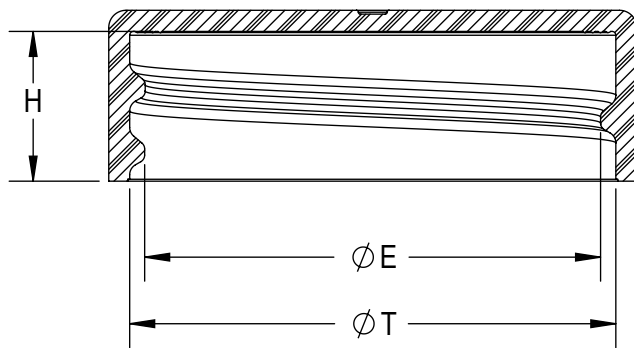
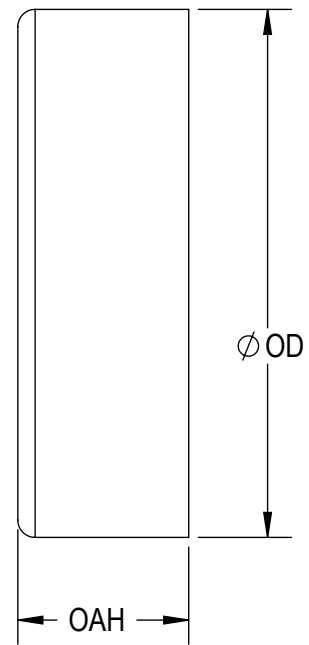
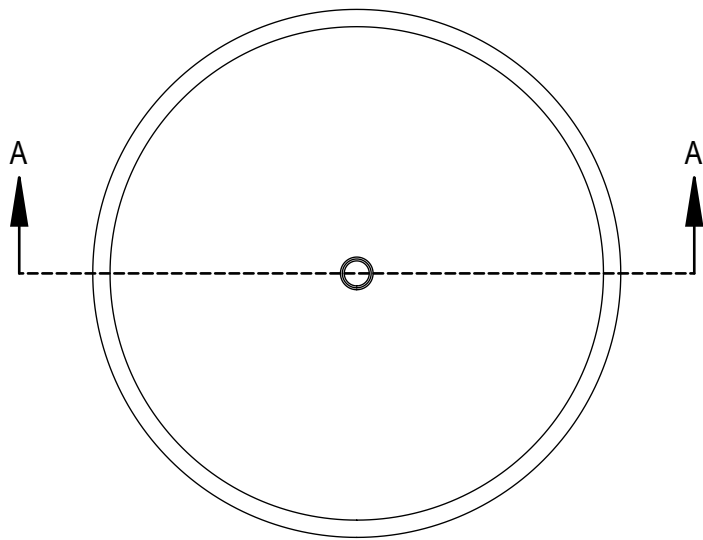
Continuous Thread Caps

33mm 33-400 White Smooth Plastic Cap
w/PS22 Liner (Printed)



The
CARYCOMPANY
Est. 1895

1195 W. Fullerton Ave. | Addison, IL 60101 | T: 630.629.6600 | F: 630.629.3690 |



SECTION A-A
SCALE 2 : 1

THREAD DETAIL INFORMATION:
6 THREADS PER INCH, 0.167" PITCH

REFERENCE	TOLERANCE	UNITS	DIMENSION
E	± 0.010 [0.25]	in [mm]	1.182 [30.02]
T	± 0.015 [0.38]	in [mm]	1.276 [32.41]
H	± 0.010 [0.25]	in [mm]	0.388 [9.86]
OAH	± 0.010 [0.25]	in [mm]	0.445 [11.3]
OD	± 0.010 [0.25]	in [mm]	1.375 [34.93]
PART WEIGHT	± 0.30		2.30

STATIC TORQUE RECOMMENDATION
15-25 in-lbs
THIS REQUIREMENT MAY VARY DEPENDING
UPON BOTTLE MATERIAL, NECK FINISH, AND
CAPPING EQUIPMENT

DRAWING TYPE : CUSTOMER

REPLACES DRAWINGS:

C-1007

DIMENSIONS ENCLOSED IN ()
INDICATE REFERENCE
DIMENSIONS AND NO TOLERANCE
LIMITS ARE ESTABLISHED

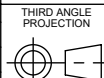
TOLERANCES UNLESS OTHERWISE SPECIFIED

DIMENSION (inches)	TOLERANCE	DIMENSION (mm)	TOLERANCE
0-0.787	± 0.006	0-20	± 0.152
0.788-1.181	± 0.008	21-30	± 0.203
1.182-2.756	± 0.012	31-70	± 0.305
2.757-3.937	± 0.016	71-100	± 0.406
3.938-5.096	± 0.020	101-150	± 0.508
5.097-7.874	± 0.024	151-200	± 0.610
7.875-9.843	± 0.032	201-250	± 0.813

ANGULAR TOLERANCE $\pm 2^\circ$

PROPRIETARY AND CONFIDENTIAL

The
CARY COMPANY
Est. 1895



SOLIDWORKS

DISTRIBUTION
CODE

D

DRAWING NAME

33-400 CT
SS (SMOOTH SIDE, SMOOTH TOP)

DRAWING NUMBER

CQA - 10741

MATERIAL

POLYPROPYLENE

MODEL NUMBER:

PM 10674 33-400 CT

SCALE

1:1

SHEET SIZE

8.5in*11in

SHEET

1 of 3

REV.NP

00.AC

DRAWN BY: DAS

4/6/2017

ENG APPR: CAN

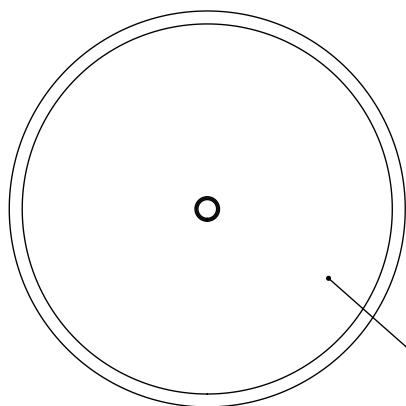
3/14/2022

QA APPR: TEM

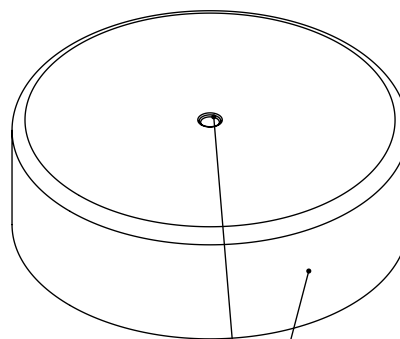
03/14/2022

REVISIONS

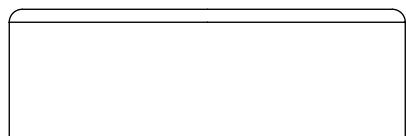
DATE	REV	N/P	ZONE	DESCRIPTION	ENG	DRW
04/03/2017	00	AA		UPDATED DRAWING FORMAT	BDG	DAS
03/18/2020	00	AB		UPDATED RNF H TO 0.408 MINIMUM	CAN	CAN
02/14/2022	00	AC		T TOLERANCE UPDATED FROM 0.010 TO 0.015 BASED ON HISTORICAL DATA	CAN	CAN



POLISHED FINISH
TOP AND SIDES



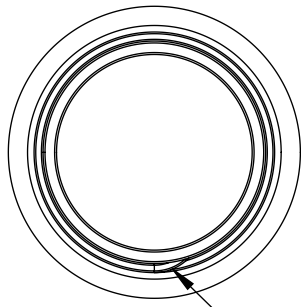
OPTIONAL
GATE LOCATIONS
(SEE TABLE)



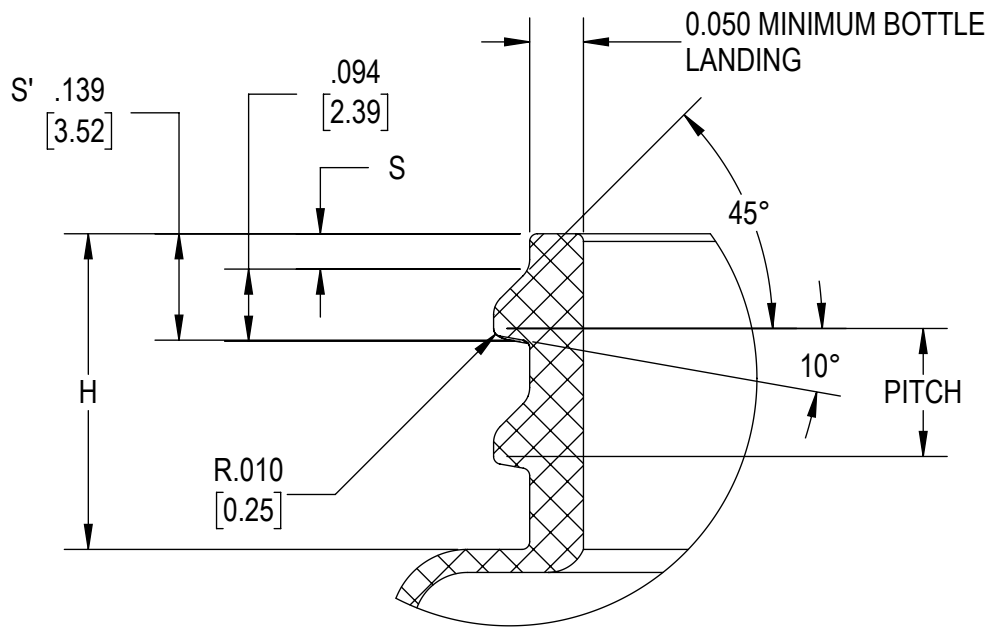
GATE LOCATION	
33010	SIDE
33014	TOP
33020	SIDE

DRAWING TYPE : CUSTOMER			
REFERENCES: 33010, 33014, 33020		DIMENSIONS ENCLOSED IN () INDICATE REFERENCE DIMENSIONS AND NO TOLERANCE LIMITS ARE ESTABLISHED	
TOLERANCES UNLESS OTHERWISE SPECIFIED			
DIMENSION (inches)	TOLERANCE	DIMENSION (mm)	TOLERANCE
0-0.787	±0.006	0-20	±0.152
0.788-1.181	±0.008	21-30	±0.203
1.182-2.756	±0.012	31-70	±0.305
2.757-3.937	±0.016	71-100	±0.406
3.938-5.096	±0.020	101-150	±0.508
5.097-7.874	±0.024	151-200	±0.610
7.875-9.843	±0.032	201-250	±0.813
ANGULAR TOLERANCE ± 2°			
PROPRIETARY AND CONFIDENTIAL			

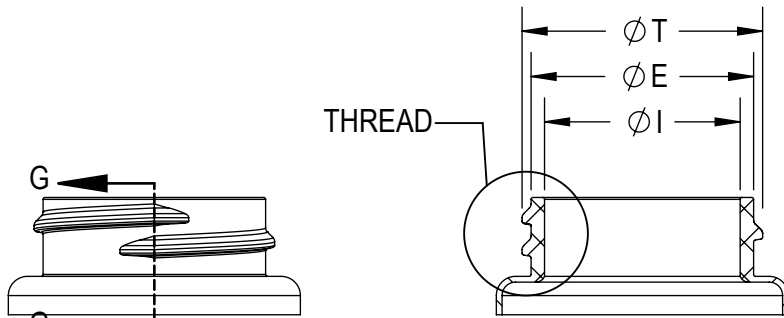
 THIRD ANGLE PROJECTION	DISTRIBUTION CODE D	DRAWING NAME 33-400 CT SS (SMOOTH SIDE, SMOOTH TOP)	
		DRAWING NUMBER CQA - 10741	
DRAWN BY. DAS	4/6/2017	MATERIAL POLYPROPYLENE	
ENG APPR. CAN	3/14/2022	MODEL NUMBER: PM 10674 33-400 CT	
QA APPR. TEM	03/14/2022	SCALE 3:2	SHEET SIZE 8.5 X 11 SHEET 2 of 3 REV/NP 00.AC



THREAD START



DETAIL THREAD
SCALE 4 : 1



SECTION G-G

REFERENCE	TOLERANCE	UNITS	DIMENSION
E	±0.012[0.30]	in [mm]	1.159[29.44]
T	±0.012[0.30]	in [mm]	1.253[31.83]
I	MINIMUM	in [mm]	0.791 [20.09]
S	±0.015[0.38]	in [mm]	0.046[1.17]
H	MINIMUM	in [mm]	0.408[10.36]
PITCH		in [mm]	0.167
TPI			6

NOTE: THE NOMINAL ORIENTATION ILLUSTRATED IS BASED ON NOMINAL DIMENSIONS OF BOTH THE CLOSURE AND THE RECOMMENDED NECK FINISH. FOR EXACT ORIENTATION EACH BOTTLE SHOULD BE EVALUATED ON A CASE BY CASE BASIS.

DRAWING TYPE : CUSTOMER

DIMENSIONS ENCLOSED IN () INDICATE REFERENCE DIMENSIONS AND NO TOLERANCE LIMITS ARE ESTABLISHED

TOLERANCES UNLESS OTHERWISE SPECIFIED

DIMENSION (inches)	TOLERANCE	DIMENSION (mm)	TOLERANCE
0-0.787	±0.006	0-20	±0.152
0.788-1.181	±0.008	21-30	±0.203
1.182-2.756	±0.012	31-70	±0.305
2.757-3.937	±0.016	71-100	±0.406
3.938-5.096	±0.020	101-150	±0.508
5.097-7.874	±0.024	151-200	±0.610
7.875-9.843	±0.032	201-250	±0.813

ANGULAR TOLERANCE ± 2°

PROPRIETARY AND CONFIDENTIAL

The
CARYCOMPANY
Est. 1895



SOLIDWORKS

DISTRIBUTION CODE

D

DRAWING NAME

33-400 CT
RECOMMENDED NECK FINISH

DRAWING NUMBER

CQA - 10741

MATERIAL

DRAWN BY:

DAS

4/6/2017

ENG APPR.:

CAN

3/14/2022

QA APPR.:

TEM

03/14/2022

MODEL NUMBER:

SCALE

1:1

SHEET SIZE

8.5 X 11

SHEET

3 of 3

REV/N/P

00.AC