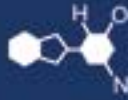


# IF YOU...



MIX IT. FILL IT. PACK IT. SHIP IT.

# WE HAVE A **PRODUCT** FOR YOU

Part #: 99G280

---

---




---

The  
**CARY**COMPANY  
Est. 1895

1195 W. Fullerton Ave. | Addison, IL 60101 | T: 630.629.6600 | F: 630.629.3690 |

## PLASTIC DRUM STANDARD PRODUCT DESCRIPTION

<b>Drum Identifier:</b> 56WT55 - 56WT5L - 99G280		<b>Product Name:</b> 99G280	
<b>Regulatory Information:</b>  un 1H2/Y185/S <sup>1</sup> (Test report P-2237)  un 1H2/Z185/S <sup>2</sup> (Test Report P-2226)	<b>Bill of Materials:</b>  <b>Body:</b> Extrusion blow molded high molecular weight high density polyethylene (HMW-HDPE)  <b>Cover:</b> Plain, one 2" opening, or two 2" openings available, NPS bungs, HDPE. Vented bungs are available as an option. (NPS = National Pipe Straight thread)  <b>Lockband:</b> Side lever (SLL) or bolt ring, or plastic lockband	<b>Product Illustration:</b> 	
<b>Nominal Capacity:</b> 55.0 U.S. Gallons	<b>Outage:</b> 0.9 U.S. Gallons	<b>Opening I.D.:</b> 22.0 inches	<b>Total Weight:</b> 22.5 lbs.
<b>Maximum Capacity:</b> 55.9 U.S. Gallons	<b>Outage %:</b> 1.6 %	<b>Nominal O.D.:</b> 23.8 inches	<b>Body Weight:</b> 17.5 lbs.
<b>Export Cubes:</b> 11.63 cu. ft.	<b>Overall Height:</b> 38.8 inches	<b>Taper Height:</b> 31.0 inches	<b>Nesting Height:</b> 6.7 inches
<b>Min. Blocking Diameter:</b> 19.7 inches	<b>Body Height:</b> 38.5 inches	<b>Min. Wall Thickness:</b> 0.090 inches	<b>Chime Height:</b> 0.530 inches
<b>Special Notes:</b> <ol style="list-style-type: none"> <li>Maximum filling temperature 150°F. When filled at these recommended maximum filling temperatures, drums should be allowed to cool to ambient prior to stacking. Drums filled at elevated temperatures should be vented properly to prevent vacuum formation within the drum which can compromise stacking capability.</li> <li>Stack 3 high (1+2) maximum with pallets between drums. Maximum top load on bottom drums not to exceed 600 lbs. each. Can be stacked (1+1) on cover without slip sheet of plywood and no additional top load. Pallets should be of good quality that provides adequate support for plastic drums.</li> <li>Handle with parrotbeak, side grabber, and sling.</li> <li>Drums are fully nestable without airlocking.</li> <li>Recycle symbol embossed on bottom.</li> <li>Patent number 5,881,898 embossed on drum.</li> <li>Compatibility with hazardous materials as listed in 49CFR are the responsibility of the filler.</li> <li>Available from LaPalma with plastic lockband at Y100. Total weight 20.9 lbs.</li> <li>Manufactured at the following locations: <ol style="list-style-type: none"> <li><sup>1</sup> Lockport &amp; LaPalma</li> <li><sup>2</sup> Houston</li> </ol> </li> </ol>			
<p>Data, dimensions, and information provided on this document are considered as nominal values for general purpose use in evaluating this product for customer's application. These are not considered as manufacturing specifications. It is the responsibility of the customer or filler to select the appropriate packaging for use or resale, based on all information at their disposal, including specific application, regulatory compliance, product compatibility, transport, storage, and material handling requirements. Regulatory compliance for remanufacture, repair, or reuse of packaging is the responsibility of the reconditioner, customer and filler. Refer to appropriate regulations for packaging filling, transport, and storage requirements with your specific product.</p> <p>WE HEREBY DISCLAIM AND EXCLUDE ANY EXPRESS OR IMPLIED WARRANTIES, INCLUDING WITHOUT LIMITATION THE IMPLIED WARRANTIES OF MERCHANTABILITY AND FITNESS FOR A PARTICULAR PURPOSE.</p>			